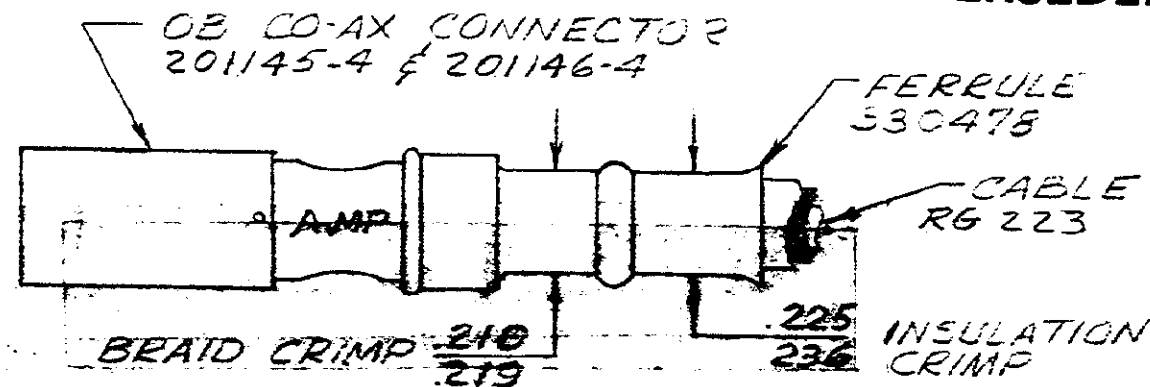


**SUPERSEDED BY 69248-4 MOD J**

I.S. 1770-2  
- C DIM.



THE CRIMP DIM'S APPLY ONLY TO THE ABOVE COMBINATIONS

CENTER CONTACT CRIMP  
(USE PLUG GAGE)

METHOD OF GAGING CRIMP DIMENSIONS

C" DIM.	
GO	NO GO
.037	.040

Gage dimensions apply when tool is bottomed but not under pressure.

QTY	NUMBER	NAME	REMARKS	REV
1	21022-2	SELF LOCKING		3
1	6300131-2	SCREW		8
2	21045-6	RING-RETAINING		7
1	300449	PIN-RETAINING		6
1	39364	SPRING		5
1	39366	COLLAR		4
2	300432	PIN-RETAINING		3
1	H304.57-8	PIN-RETAINING		2
5	21045-3	RING-RETAINING		1

NO.	DESCRIPTION	DATE	BY	CHK
FI	SUP BY I.S. 1770-2		EJP	EJP 3/16/71
F	REVISED		BS	BS 2/25/65
E	REVISED		B.S.	B.S. 2/25/65
D	REVISED		CM	CM 1/2/63
C	REVISED		CM	CM 1/2/63
B	REVISED		CM	CM 1/2/63
A	REVISED		R.Y.	R.Y. 2/25/63

NO.	DESCRIPTION	DATE	BY	CHK
4	REQUIRED PER ASSEMBLY			

© 1962 BY AMP INCORPORATED. ALL RIGHTS RESERVED.  
AMP PRODUCTS COVERED BY PATENTS AND OR PATENTS PENDING.

CUSTOMER COPY REFERENCE ONLY

AMP INCORPORATED  
HARTFORD, CONNECTICUT

CLASS

WIRE RANGE INSULATION  
REV 539

TOLERANCE EXCEPT AS NOTED  
- .015

SCALE  
1-1

LOC  
M

NO  
B

NO  
69248-4

REV  
E1

NAME  
HAND TOOL ASSEMBLY

DIMENSIONS IN INCHES. (DO NOT SCALE PRINT)  
 1288-2 10/62  
 1/8