

TMX P349

SAW BANDPASS FILTER - CDMA RX-IF

Specification

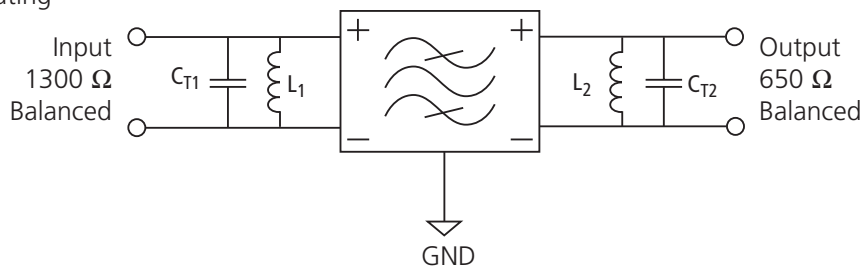
All performances include temperature variations

		Minimum	Typical	Maximum
Source impedance (Balanced)	Ω		1300	
Load impedance (Balanced)	Ω		650	
Operating temperature range	$^{\circ}\text{C}$	-30		+85
Center frequency F_c	MHz		183.6	
Template on the amplitude, reference is loss at F_c				
Bandwidth at -5.0 dB	MHz	± 0.63	± 0.68	
Bandwidth at -33.0 dB	MHz		± 0.84	± 0.9
Out of band rejection				
From 10 MHz to 168.6 MHz	dB	50	60	
From 168.6 MHz to 174.6 MHz	dB	45	52	
From 174.6 MHz to 182.7 MHz	dB	33	35	
From 184.5 MHz to 192.6 MHz	dB	33	35	
From 192.6 MHz to 198.6 MHz	dB	40	47	
From 198.6 MHz to 283.6 MHz	dB	50	56	
Attenuation at $F_c \pm 0.9$ MHz	dB	35	38	
Attenuation at $F_c \pm 1.25$ MHz	dB	35	39	
Attenuation at $F_c \pm 1.7$ MHz	dB	35	39	
Attenuation at $F_c \pm 2.05$ MHz	dB	35	37	
Phase linearity within $F_c \pm 0.63$ MHz ⁽¹⁾	$^{\circ}\text{rms}$		1.2	2.5
Amplitude ripple within $F_c \pm 0.3$ MHz ⁽¹⁾	dB		0.3	1.0
Insertion loss at F_c ⁽¹⁾	dB		9.0	10.5
Package type & size		SMP 34		
Length x width	mm ²		9.1 x 4.8	
Height	mm		1.6	1.8
Pin Out				
Input (+)	9	Output (+)	4	
Input (-)	10	Output (-)	5	
Case Ground	1, 3, 6, 8	To Be Grounded	1, 2, 3, 6, 7, 8	

Note:

⁽¹⁾With No Time Gating

Matching network for 1300 Ω / 650 Ω configuration



Temex Microsonics test fixture	Customer PC Board
$L_1 = 120$ nH Q > 45 / $L_2 = 82$ nH Q > 45	$L_1 = \text{TBD}$ Q > 45 / $L_2 = \text{TBD}$ Q > 45

C_{T1} and C_{T2} = Tuning capacitors for Inductors (L_1/L_2) adjustment / TBD = To Be Defined

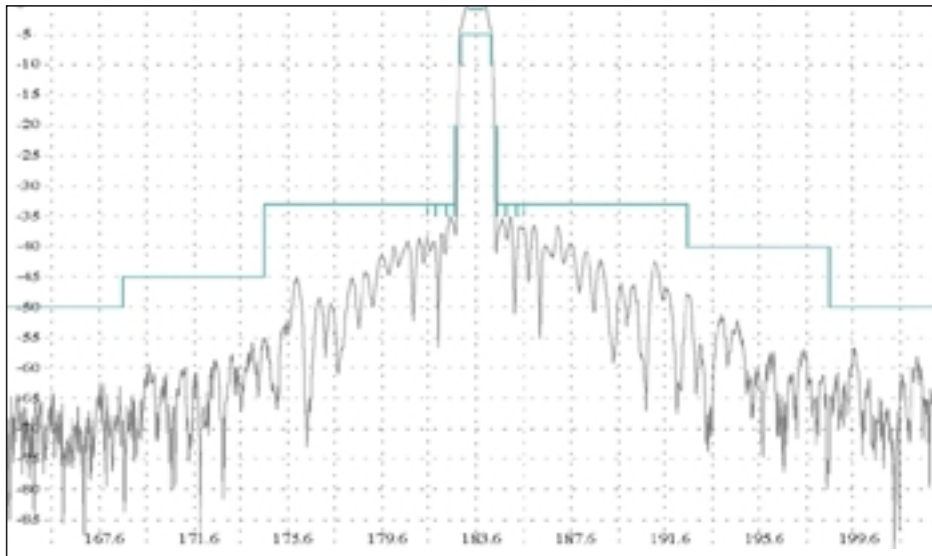
TMX P349

SAW BANDPASS FILTER - CDMA RX-IF

Typical response

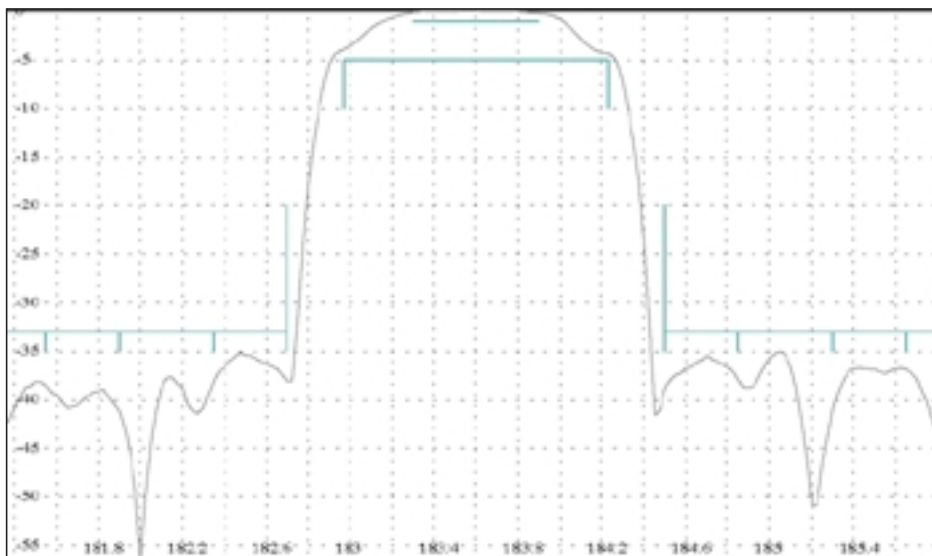
Center frequency = 183.6 MHz
 Loss reference = 09.0 dB
 Delay reference = 1.55 μ s
 Phase reference = 18.92 deg

Scale frequency = 2 MHz/div
 Scale amplitude = 5 dB/div



Center frequency = 183.6 MHz
 Loss reference = 09.0 dB
 Delay reference = 1.55 μ s
 Phase reference = 18.92 deg

Scale frequency = 0.2 MHz/div
 Scale amplitude = 5 dB/div

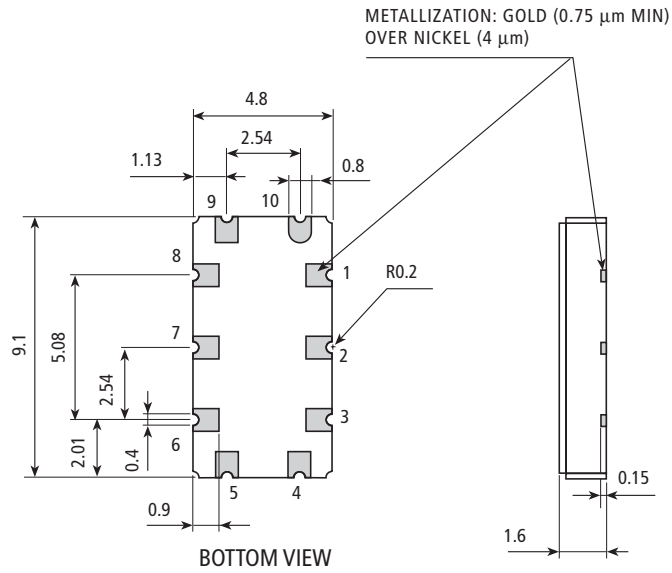


TMX P349

SAW BANDPASS FILTER - CDMA Rx-IF

Package

All dimensions in mm



	A	0.1mm/25.4mm
General Tolerance		± 0.2 mm