

VOLTAGE CONTROLLED OSCILLATOR

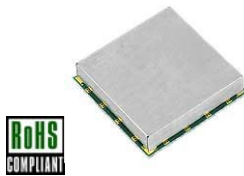
SURFACE MOUNT MODEL: DCRO273290-10

OPTIMIZED BANDWIDTH

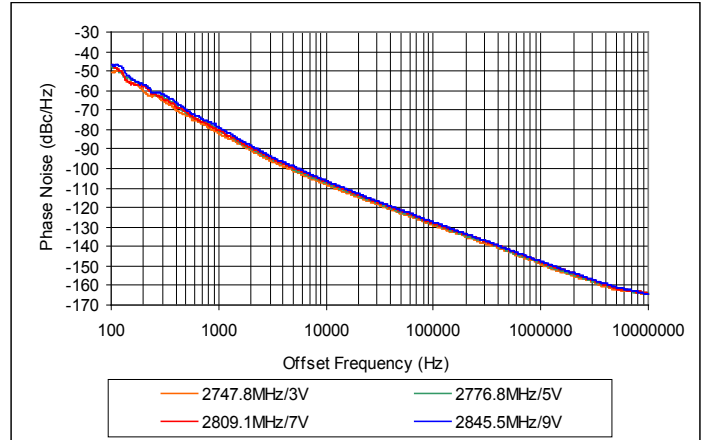
2730 - 2900 MHz

FEATURES:

- ▶ Exceptional Phase Noise Performance
- ▶ Small Size, Surface Mount
- ▶ Lead Free REL-PRO® Technology



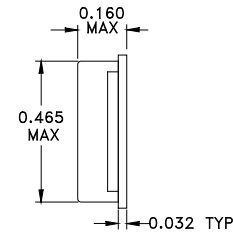
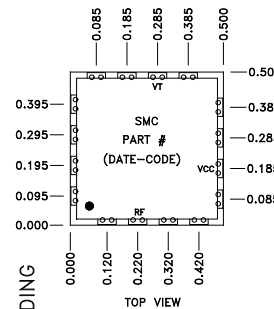
Phase Noise



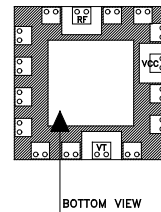
SPECIFICATIONS

Frequency	2730 - 2900 MHz
Tuning Voltage (Full Band)	0.5 - 15 VDC
Bias Voltage	+10 VDC @ 35 mA (Max)
Output Power	+5 dBm (Min)
Tuning Sensitivity	15 - 25 MHz/V (Typ)
Output Impedance	50 Ohms (Nom)
Harmonic Suppression	30 dBc (Typ)
Frequency Pulling	1.5 MHz (Typ @ 1.75:1 VSWR)
Frequency Pushing	1.5 MHz/V (Typ)
Phase Noise @ 10 kHz	-108 dBc/Hz (Typ)
Operating Temperature Range	-40 to +85 °C

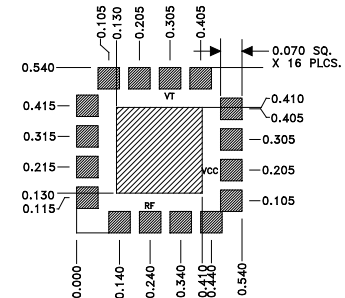
Package # 278LF



REL-PRO® PATENT PENDING



RECOMMENDED PCB LAYOUT



OPTIONAL SOLDER AREA FOR HIGH VIBRATION ENVIRONMENT

TOLERANCES ON THREE DECIMAL PLACES = ± 0.015

PACKAGE MOUNTING: SEE APPLICATION NOTE AN7200

ALL UNLABELED PINS TO BE GROUNDED.

Guaranteed Tuning Specifications

Tuning Voltage (V)	Frequency (MHz)
0.5	2730 (Max)
5	2750 (Min)
8	2800 (Min)
12	2850 (Min)
15	2900 (Min)



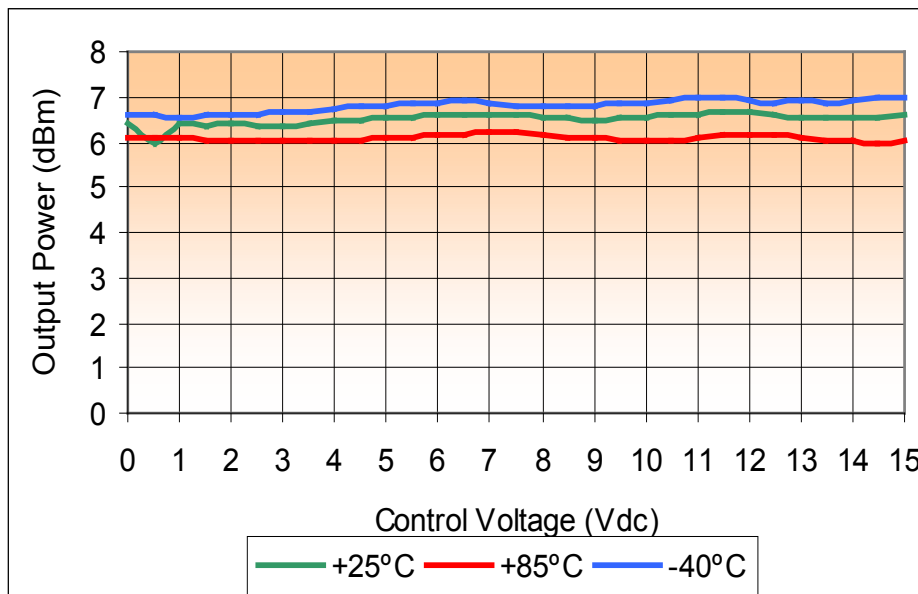
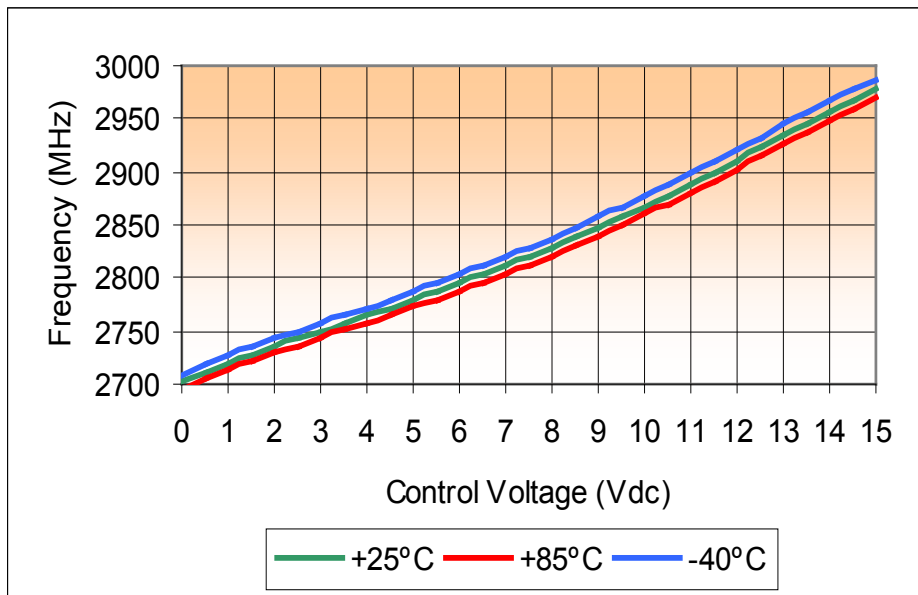
VOLTAGE CONTROLLED OSCILLATOR

SURFACE MOUNT MODEL: DCRO273290-10

OPTIMIZED BANDWIDTH

2730 - 2900 MHz

PERFORMANCE PLOTS



VOLTAGE CONTROLLED OSCILLATOR

SURFACE MOUNT MODEL: DCRO273290-10

OPTIMIZED BANDWIDTH

2730 - 2900 MHz

PERFORMANCE PLOTS

