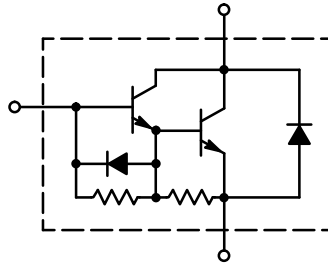


NPN Darlington Power Transistor

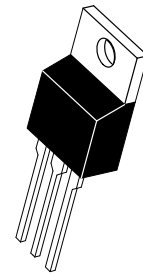
This Darlington transistor is a high voltage, high speed device for use in horizontal deflection circuits in TV's and CRT's.

- High Voltage: $V_{CEV} = 330$ or 400 V
- Fast Switching Speed:
 $t_C = 1.0 \mu s$ (max)
- Low Saturation Voltage:
 $V_{CE(sat)} = 1.5$ V (max)
- Packaged in JEDEC TO-220AB
- Damper Diode V_F is specified.
 $V_F = 2.0$ V (max)



BU806

**8.0 AMPERE
DARLINGTON
NPN POWER
TRANSISTORS
60 WATTS
200 VOLTS**



**CASE 221A-06
TO-220AB**

MAXIMUM RATINGS

| Rating | Symbol | BU806 | Unit |
|---|----------------|------------|------------------------|
| Collector-Emitter Voltage | V_{CEO} | 200 | Vdc |
| Collector-Emitter Voltage | V_{CEV} | 400 | Vdc |
| Collector-Base Voltage | V_{CBO} | 400 | Vdc |
| Emitter-Base Voltage | V_{EBO} | 6.0 | Vdc |
| Collector Current — Continuous — Peak | I_C | 8.0 15 | Adc |
| Emitter-Collector Diode Current | I_F | 10 | Adc |
| Base Current | I_B | 2.0 | Adc |
| Total Device Dissipation, $T_C = 25^\circ C$ Derate above $T_C = 25^\circ C$ | P_D | 60 0.48 | Watts W/ $^\circ C$ |
| Operating and Storage Junction Temperature Range | T_J, T_{stg} | -65 to 150 | $^\circ C$ |

THERMAL CHARACTERISTICS

| Characteristic | Symbol | Max | Unit |
|--|-----------------|------|--------------|
| Thermal Resistance, Junction to Case | $R_{\theta JC}$ | 2.08 | $^\circ C/W$ |
| Thermal Resistance, Junction to Ambient | $R_{\theta JA}$ | 70 | $^\circ C/W$ |
| Lead Temperature for Soldering Purposes, 1/8" from Case for 5.0 Seconds | T_L | 275 | $^\circ C$ |

ELECTRICAL CHARACTERISTICS ($T_C = 25^\circ\text{C}$ unless otherwise noted)

| Characteristic | Symbol | Min | Typ | Max | Unit |
|---|---------------|-----|-----|-----|-----------------|
| OFF CHARACTERISTICS | | | | | |
| Collector–Emitter Sustaining Voltage (1) ($I_C = 100\text{ mAdc}$, $I_B = 0$) | $V_{CE(sus)}$ | 200 | — | — | Vdc |
| Collector Cutoff Current ($V_{CE} = \text{Rated } V_{CBO}$, $V_{BE} = 0$) | I_{CES} | — | — | 100 | μAdc |
| Collector Cutoff Current ($V_{CE} = \text{Rated } V_{CEV}$, $V_{BE(off)} = 6.0\text{ Vdc}$) | I_{CEV} | — | — | 100 | μAdc |
| Emitter Cutoff Current ($V_{EB} = 6.0\text{ Vdc}$, $I_C = 0$) | I_{EBO} | — | — | 3.0 | mAdc |

ON CHARACTERISTICS (1)

| | | | | | |
|---|---------------|---|---|-----|-----|
| Collector–Emitter Saturation Voltage ($I_C = 5.0\text{ Adc}$, $I_B = 50\text{ mAdc}$) | $V_{CE(sat)}$ | — | — | 1.5 | Vdc |
| Base–Emitter Saturation Voltage ($I_C = 5.0\text{ Adc}$, $I_B = 50\text{ mAdc}$) | $V_{BE(sat)}$ | — | — | 2.4 | Vdc |
| Emitter–Collector Diode Forward Voltage ($I_F = 4.0\text{ Adc}$) | V_F | — | — | 2.0 | Vdc |

SWITCHING CHARACTERISTICS

| | | | | | | |
|--|--|----------|---|------|-----|---------------|
| Turn–On Time | (Resistive Load, $V_{CC} = 100\text{ Vdc}$, $I_C = 5.0\text{ Adc}$, $I_{B1} = 50\text{ mAdc}$, $I_{B2} = 500\text{ mAdc}$) | t_{on} | — | 0.35 | — | μs |
| Storage Time | | t_s | — | 0.55 | — | μs |
| Fall Time | | t_f | — | 0.20 | — | μs |
| Crossover Time ($I_C = 5.0\text{ Adc}$, $I_{B1} = 50\text{ mAdc}$, $V_{BE(off)} = 4.0\text{ Vdc}$, $V_{clamp} = 200\text{ Vdc}$, $L = 500\text{ }\mu\text{H}$) | | t_c | — | 0.40 | 1.0 | μs |

(1) Pulse Test: Pulse Width $\leq 300\text{ }\mu\text{s}$, Duty Cycle $\leq 1\%$.

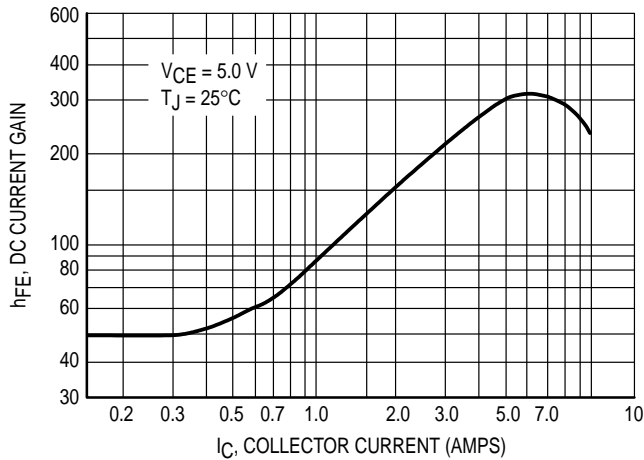


Figure 1. DC Current Gain

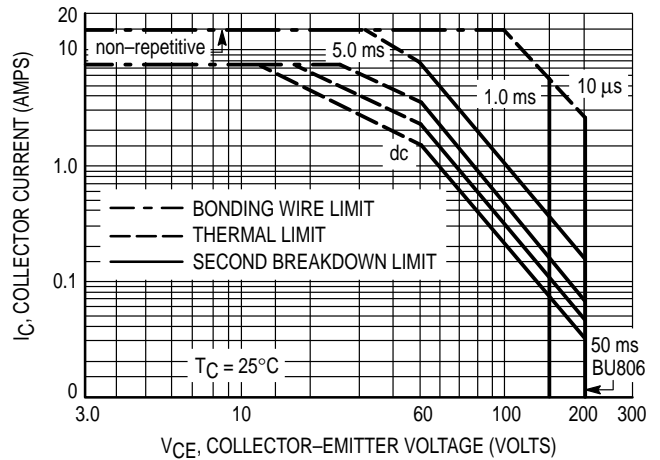
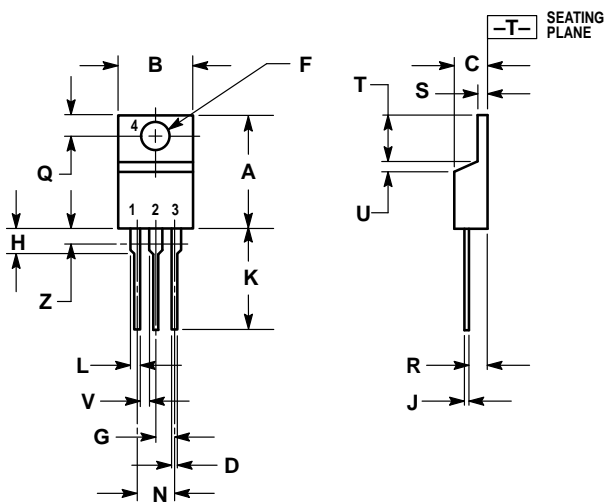


Figure 2. Safe Operating Area (FSOA)

PACKAGE DIMENSIONS



- NOTES:
1. DIMENSIONING AND TOLERANCING PER ANSI Y14.5M, 1982.
 2. CONTROLLING DIMENSION: INCH.
 3. DIMENSION Z DEFINES A ZONE WHERE ALL BODY AND LEAD IRREGULARITIES ARE ALLOWED.

| DIM | INCHES | | MILLIMETERS | |
|-----|--------|-------|-------------|-------|
| | MIN | MAX | MIN | MAX |
| A | 0.570 | 0.620 | 14.48 | 15.75 |
| B | 0.380 | 0.405 | 9.66 | 10.28 |
| C | 0.160 | 0.190 | 4.07 | 4.82 |
| D | 0.025 | 0.035 | 0.64 | 0.88 |
| F | 0.142 | 0.147 | 3.61 | 3.73 |
| G | 0.095 | 0.105 | 2.42 | 2.66 |
| H | 0.110 | 0.155 | 2.80 | 3.93 |
| J | 0.018 | 0.025 | 0.46 | 0.64 |
| K | 0.500 | 0.562 | 12.70 | 14.27 |
| L | 0.045 | 0.060 | 1.15 | 1.52 |
| N | 0.190 | 0.210 | 4.83 | 5.33 |
| Q | 0.100 | 0.120 | 2.54 | 3.04 |
| R | 0.080 | 0.110 | 2.04 | 2.79 |
| S | 0.045 | 0.055 | 1.15 | 1.39 |
| T | 0.235 | 0.255 | 5.97 | 6.47 |
| U | 0.000 | 0.050 | 0.00 | 1.27 |
| V | 0.045 | — | 1.15 | — |
| Z | — | 0.080 | — | 2.04 |

- STYLE 1:
 PIN 1. BASE
 2. COLLECTOR
 3. EMITTER
 4. COLLECTOR

CASE 221A-06
 TO-220AB
 ISSUE Y

Motorola reserves the right to make changes without further notice to any products herein. Motorola makes no warranty, representation or guarantee regarding the suitability of its products for any particular purpose, nor does Motorola assume any liability arising out of the application or use of any product or circuit, and specifically disclaims any and all liability, including without limitation consequential or incidental damages. "Typical" parameters can and do vary in different applications. All operating parameters, including "Typicals" must be validated for each customer application by customer's technical experts. Motorola does not convey any license under its patent rights nor the rights of others. Motorola products are not designed, intended, or authorized for use as components in systems intended for surgical implant into the body, or other applications intended to support or sustain life, or for any other application in which the failure of the Motorola product could create a situation where personal injury or death may occur. Should Buyer purchase or use Motorola products for any such unintended or unauthorized application, Buyer shall indemnify and hold Motorola and its officers, employees, subsidiaries, affiliates, and distributors harmless against all claims, costs, damages, and expenses, and reasonable attorney fees arising out of, directly or indirectly, any claim of personal injury or death associated with such unintended or unauthorized use, even if such claim alleges that Motorola was negligent regarding the design or manufacture of the part. Motorola and  are registered trademarks of Motorola, Inc. Motorola, Inc. is an Equal Opportunity/Affirmative Action Employer.

How to reach us:

USA / EUROPE: Motorola Literature Distribution;
P.O. Box 20912; Phoenix, Arizona 85036. 1-800-441-2447

JAPAN: Nippon Motorola Ltd.; Tatsumi-SPD-JLDC, Toshikatsu Otsuki,
6F Seibu-Butsuryu-Center, 3-14-2 Tatsumi Koto-Ku, Tokyo 135, Japan. 03-3521-8315

MFAX: RMFAX0@email.sps.mot.com - TOUCHTONE (602) 244-6609
INTERNET: <http://Design-NET.com>

HONG KONG: Motorola Semiconductors H.K. Ltd.; 8B Tai Ping Industrial Park,
51 Ting Kok Road, Tai Po, N.T., Hong Kong. 852-26629298

