

# Surface Mount Bias-Tees

**NEW!**  
**TCBT-2R5G**

Wideband 20 to 2500 MHz

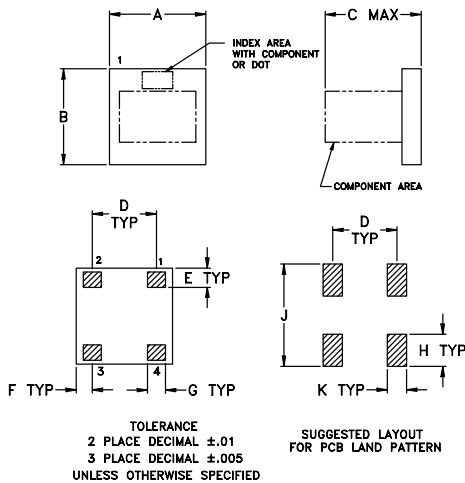
## Maximum Ratings

Operating Temperature	-45°C to 85°C
Storage Temperature	-55°C to 100°C
RF Power	30dBm max.
Voltage at DC port	25V max.
Input Current	200mA

## Pin Connections

RF	4
RF&DC	3
DC	1
ISOLATED	2

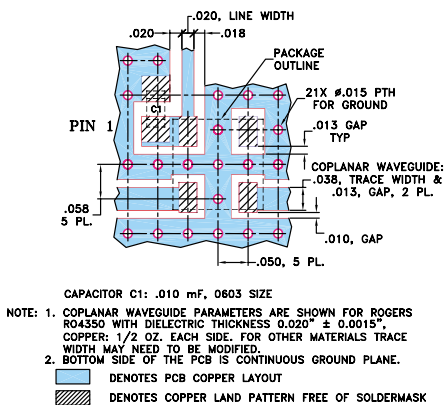
## Outline Drawing



## Outline Dimensions (inch/mm)

A	B	C	D	E	F	G
.150	.150	.150	.100	.030	.025	0.28
3.81	3.81	3.81	2.54	0.76	0.64	0.71
H	J	K	wt.			
.050	.160	.030	grams			
1.27	4.06	0.76	.10			

## Demo Board MCL P/N: TB-268 Suggested PCB Layout (PL-146)



## Features

- wideband, 20-2500 MHz
- low insertion loss, 0.4 dB typ.
- miniature surface mount 0.15"x0.15"
- patent pending

## Applications

- biasing amplifiers
- biasing of laser diodes
- biasing of active antennas



**BLUE CELL™**

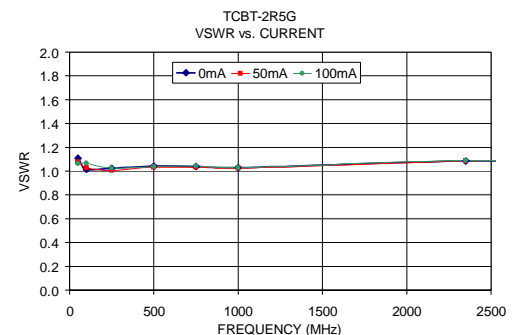
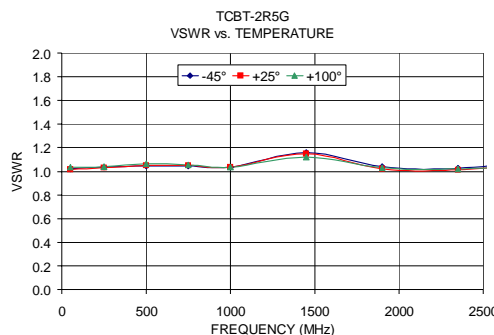
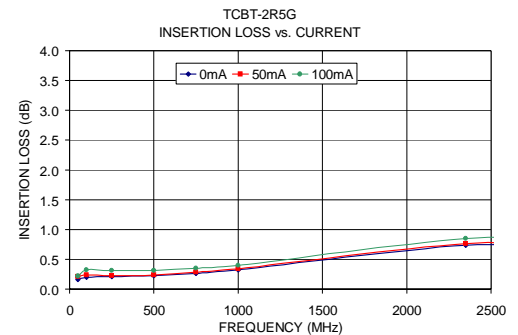
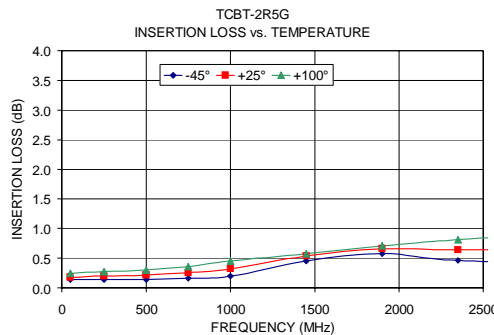
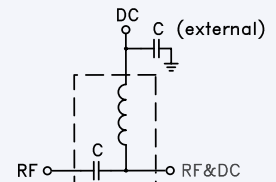
CASE STYLE: GU1041  
PRICE: \$8.95 ea. QTY (10-49)

## Electrical Specifications\*

MODEL NO.	FREQ. RANGE (MHz)	INSERTION LOSS** (dB)			ISOLATION** (dB)			VSWR** (:1)											
		L	M	U	L	M	U	L	M	U									
TCBT-2R5G	20-2500	0.2	0.8	0.35	0.8	0.7	1.2	65	40	44	25	25	20	1.05	1.5	1.05	1.2	1.1	1.25

L= 20-200 MHz      M=200-1250 MHz      U=1250-2500 MHz  
\* Guaranteed to 25 dBm RF and 100mA current.  
\*\* Tested with C external= 0.01 µF

## Schematic



**Mini-Circuits®**

INTERNET <http://www.minicircuits.com>

P.O. Box 350166, Brooklyn, New York 11235-0003 (718) 934-4500 Fax (718) 332-4661

Distribution Centers NORTH AMERICA 800-654-7949 • 417-335-5935 • Fax 417-335-5945 • EUROPE 44-1252-832600 • Fax 44-1252-837010

Mini-Circuits ISO 9001 & ISO 14001 Certified

REV. OR  
M90055  
ED-11250/2  
TCBT-2R5G  
DJ/RS/CP  
041119