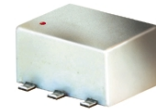


Surface Mount Frequency Mixer

ADE-5+ ADE-5

Level 7 (LO Power +7 dBm) 5 to 1500 MHz



Maximum Ratings

Operating Temperature	-40°C to 85°C
Storage Temperature	-55°C to 100°C
RF Power	50mW
IF Current	40mA

Pin Connections

LO	6
RF	3
IF	2
GROUND	1,4,5

Features

- low conversion loss, 6.6 dB typ.
- excellent L-R isolation, 40 dB typ.
- excellent IP3, 15 dBm
- aqueous washable
- protected by U.S. Patent 6,133,525

Applications

- cellular
- PCS

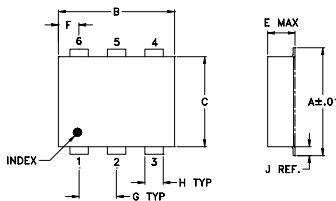
CASE STYLE: CD542

PRICE: \$3.45 ea. QTY (10-49)

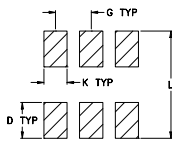
+ RoHS compliant in accordance with EU Directive (2002/95/EC)

The +Suffix identifies RoHS Compliance. See our web site for RoHS Compliance methodologies and qualifications.

Outline Drawing



PCB Land Pattern

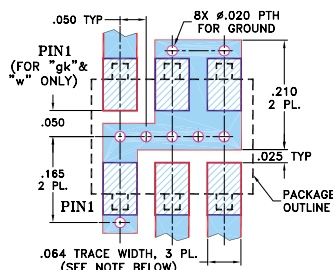


Suggested Layout,
Tolerance to be within ±.002

Outline Dimensions (inch/mm)

A	B	C	D	E	F	G	
.272	.310	.220	.100	.112	.055	.100	
6.91	7.87	5.59	2.54	2.84	1.40	2.54	
H	J	K	L				wt
.030	.026	.065	.300				grams
0.76	0.66	1.65	7.62				0.20

Demo Board MCL P/N: TB-03 Suggested PCB Layout (PL-052)



- NOTES: 1. TRACE WIDTH IS SHOWN FOR ROGERS RO4350B WITH DIELECTRIC THICKNESS .030" ± .002"; COPPER: 1/2 OZ. EACH SIDE. FOR OTHER MATERIALS TRACE WIDTH MAY NEED TO BE MODIFIED.
2. BOTTOM SIDE OF THE PCB IS CONTINUOUS GROUND PLANE.

- DENOTES PCB COPPER LAYOUT WITH SMOBC (SOLDER MASK OVER BARE COPPER)
- DENOTES COPPER LAND PATTERN FREE OF SOLDER MASK

Electrical Specifications

FREQUENCY (MHz)	CONVERSION LOSS (dB)		LO-RF ISOLATION (dB)			LO-IF ISOLATION (dB)			IP3 at center band (dBm)									
	LO/RF	IF	L	M	U	L	M	U										
5-1500	DC-1000	6.6	0.10	7.5	9.3	50	40	40	25	33	23	50	40	30	20	20	10	15

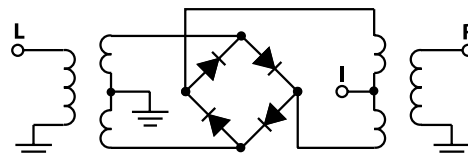
1 dB COMP.: +1 dBm typ.
Phase detection, positive polarity

L = low range [f_l to $10 f_l$]
M = mid band [$2 f_l$ to $f_l/2$]
U = upper range [$f_l/2$ to f_l]

Typical Performance Data

Frequency (MHz)		Conversion Loss (dB)	Isolation L-R (dB)	Isolation L-I (dB)	VSWR RF Port (:1)	VSWR LO Port (:1)
RF	LO	LO +7dBm	LO +7dBm	LO +7dBm	LO +7dBm	LO +7dBm
5.0	35.0	7.0	63.9	53.6	1.59	1.91
10.0	40.0	6.6	63.2	52.2	1.51	1.94
50.0	80.0	6.5	56.7	46.6	1.39	1.91
100.0	130.0	6.6	52.7	41.7	1.38	1.91
197.1	227.1	6.7	49.0	36.3	1.41	1.94
295.6	325.6	6.6	47.3	33.5	1.40	2.01
394.1	424.1	6.7	43.7	32.0	1.39	2.20
492.6	522.6	6.5	42.4	30.7	1.35	2.40
500.0	530.0	6.6	41.9	30.5	1.34	2.37
591.1	621.1	6.6	39.7	29.9	1.35	2.40
689.6	719.6	6.6	36.8	28.5	1.28	2.32
788.1	818.1	6.6	35.2	26.0	1.23	2.30
886.6	916.6	6.5	33.4	23.5	1.14	2.32
985.1	1015.1	6.4	33.2	21.8	1.09	2.49
1000.0	1030.0	6.5	33.5	21.5	1.11	2.58
1182.0	1212.0	6.6	35.6	20.4	1.50	2.88
1280.5	1310.5	7.1	36.3	19.2	1.81	2.92
1379.0	1409.0	7.6	34.3	17.9	2.10	2.92
1477.5	1507.5	8.2	31.2	17.1	2.37	2.88
1500.0	1530.0	8.2	30.5	16.8	2.46	2.96

Electrical Schematic



Mini-Circuits

INTERNET <http://www.minicircuits.com>

P.O. Box 350166, Brooklyn, New York 11235-0003 (718) 934-4500 Fax (718) 332-4661

Distribution Centers NORTH AMERICA 800-654-7949 • 417-335-5935 • Fax 417-335-5945 • EUROPE 44-1252-832600 • Fax 44-1252-837010

Mini-Circuits ISO 9001 & ISO 14001 Certified



REV. C
M98898
ADE-5
ED-7007/1
DJ/TD/CP/AM
060613
Page 1 of 2

Performance Charts

