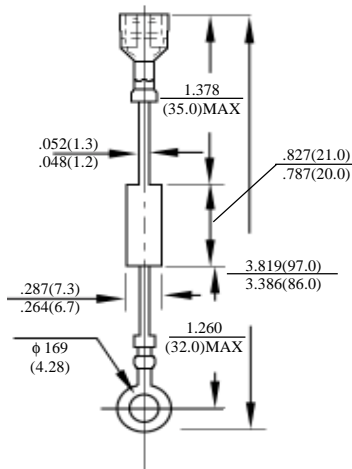


**HVM5 – HVM16**  
**HVP5 – HVP16**

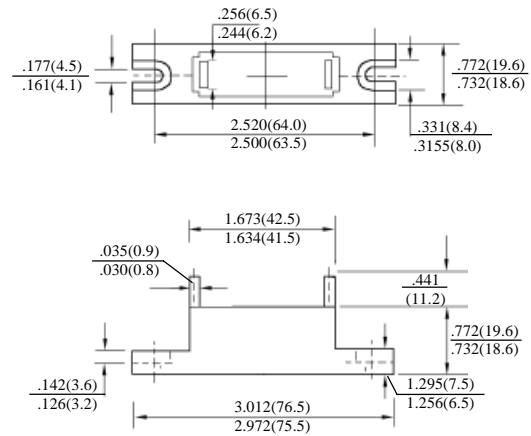
**高压二极管**
**HIGH – VOLTAGE DIODES**

最大额定值、电性 MAXIMUM RATINGS AND ELECTRICAL CHARACTERISTICS  
 Ratings at 25°C ambient temperature unless otherwise specified. Single phase, half wave, 60Hz, resistive or inductive load. For capacitive load, derate current by 20%.

型号 TYPE	最大反向 峰值电压 Maximum Peak Reverse Voltage	最大平均 正向电流 Maximum Average Forward Output Current @T <sub>A</sub> =60°C	最大正向 浪涌电流 Maximum Forward Peak Surge Current @ 8.3ms Superimposed	最大正向 峰值电压 Maximum DC Forward Voltage drop per element	最大反向 电 流 Maximum DC Reverse Current at rated DC Blocking Voltage per element		结 温 Operating Junction Temperature	外型尺寸 Package Dimensions
	PRV	I <sub>o</sub>	I <sub>FM</sub> (Surge)	V <sub>F</sub>	I <sub>R</sub>		T <sub>J</sub>	
	V <sub>PK</sub>	MA <sub>AV</sub>	A <sub>PK</sub>	V <sub>PK</sub>	25°CCTA μADC	125°CCTA μADC	°C	
HVM5 HVM8 HVM10 HVM12 HVM14 HVM15 HVM16	5000 8000 10000 12000 14000 15000 16000	350	30	at I <sub>F</sub> =0.35ADC 8.0 9.0 12 12 14 14 14	10	500	135	HVM
HVP5 HVP8 HVP10 HVP12 HVP14 HVP15 HVP16	5000 8000 10000 12000 14000 15000 16000	750	50	at I <sub>F</sub> =0.75ADC 8.0 9.0 12 12 14 14 14	10	500	130	HVP



HVM



HVP

HVM5-HVM16 HVP5-HVP16

高压二极管额定值与特性曲线

RATING & CHARACTERISTIC CURVES OF HIGH-VOLTAGE DIODES

FIG. 1 - CURRENT DERATING

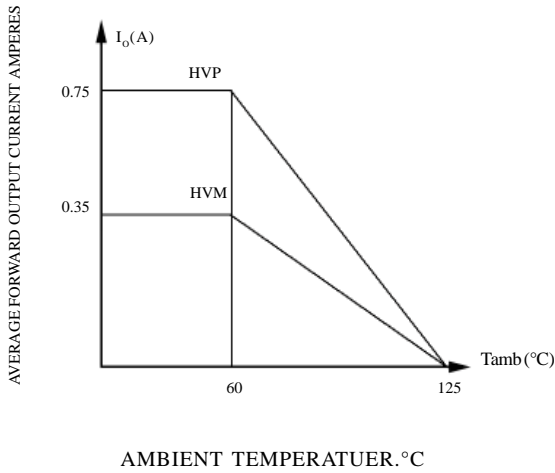


FIG. 2 - MAXIMUM NON-REPETITIVE PEAK FORWARD SURGE CURRENT

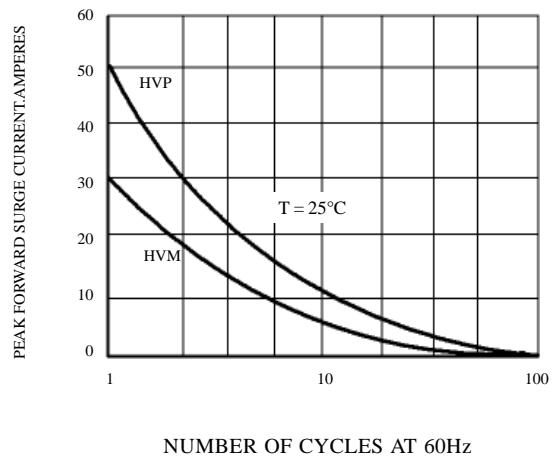


FIG. 4 - TYPICAL FORWARD CHARACTERISTICS

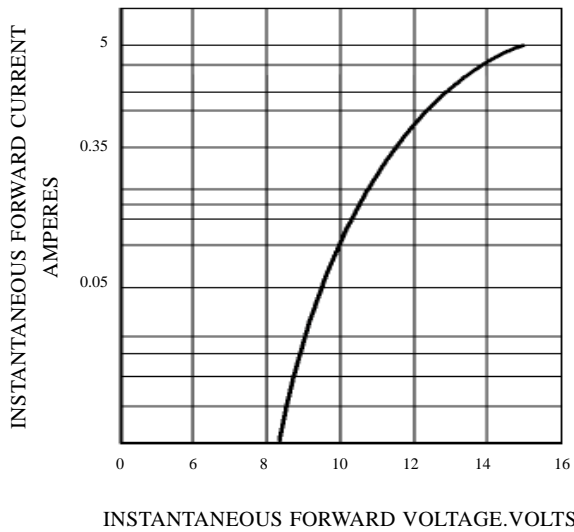


FIG. 3 - TYPICAL REVERSE CHARACTERISTICS

