

# 8-bit Proprietary Microcontroller

CMOS

## F<sup>2</sup>MC-8L MB89980 Series

### MB89983/P985/PV980

#### ■ DESCRIPTION

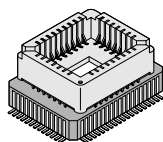
The MB89980 series is a line of the general-purpose, single-chip microcontrollers. In addition to a compact instruction set, the microcontrollers contain a variety of peripheral functions such as an LCD controller/driver, an A/D converter, timers, remote control transmission output, buzzer output, PWM timers, and external interrupts.

#### ■ FEATURES

- F<sup>2</sup>MC-8L family CPU core
- Dual-clock control system
- Maximum memory size: 8-Kbyte ROM, 256-byte RAM (max.)
- Minimum execution time: 0.95  $\mu$ s/4.2 MHz
- I/O ports: max. 47 channels (max. 13 high-current type)
- 21-bit time-base counter
- 8/16-bit timer/counter: 8bit x 2 channels or 16-bit x 1 channels
- External interrupts (wake-up function): Four channels with edge selection plus eight level-interrupt channels
- 8-bit A/D converter: 4 channels
- 8-bit PWM timers: 2 channels
- Watch prescaler (15 bits)
- LCD controller/driver: 14 segments  $\times$  4 commons (max. 56 pixels)
- LCD driving reference voltage generator
- Remote control transmission output
- Buzzer output
- Power-on reset function (option)
- Low-power consumption modes (stop, sleep, and watch mode)
- CMOS technology

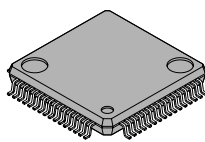
#### ■ PACKAGE

64-pin Ceramic MQFP



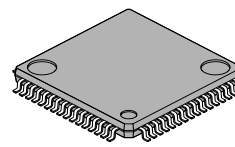
(MQP-64C-P01)

64-pin Plastic LQFP



(FPT-64P-M03)

64-pin Plastic QFP



(FPT-64P-M09)

# MB89980 Series

## ■ PRODUCT LINEUP

Part number Parameter	MB89983	MB89P985	MB89PV980
Classification	Mass production products (mask ROM products)	One-time PROM product (OTP)	Piggyback/evaluation product (for development)
ROM size	8 K x 8 bits (internal mask ROM)	16K x 8 bits (Internal PROM)	32K x 8 bits (External ROM)
RAM size	256 x 8 bits	512 x 8 bits	
CPU functions	Number of instructions: 136 Instruction bit length: 8 bits Instruction length: 1 to 3 bytes Data bit length: 1, 8, 16 bits Minimum execution time: 0.95 μs/4.2 MHz Interrupt processing time: 9 μs/4.2 MHz		
Ports	General-purpose I/O ports (N-ch open-drain): 8 (4 ports also serve as peripherals, 3 ports are heavy-current drive type.) Output-only ports (N-ch open-drain): 20 (4 ports also serve as A/D, 14 ports serve as segment pins and 2 ports serve as common pins, 10 ports are heavy- current drive type.) General-purpose I/O ports (CMOS): 16 (12 ports also serve as an external interrupt, ) Input-only ports (CMOS) 2 (serve with sub-clock pins) Output-only ports (CMOS) 1 (serves as peripherals Total: 47 (max.)		
Timer/counter	8-bit timer operation (toggled output capable, operating clock cycle 1.9 μs to 486 μs) 16-bit timer operation (toggled output capable, operating clock cycle 1.9 μs to 486 μs)		
LCD controller/driver	Common output: 4 (max.) Segment output: 14 (max.) *2 Bias power supply pins: 4 LCD display RAM size: 14 x 4 bits Dividing resistor for LCD driving: Built-in (an external resistor selectability)		
A/D converter	8-bit resolution x 4 channels A/D conversion mode (conversion time 43 μs/4.2 MHz (44 instruction cycles)) Sense mode (conversion time 11.9 μs/4.2 MHz) Continuous activation by an internal timer capable Reference voltage input		
PWM timer 1, PWM timer 2	8 bits x 2 channels 8-bit reload timer operation (toggled output capable, operating clock cycle: 0.95 μs to 124 ms) 8-bit resolution PWM operation (conversion cycle: 243 μs to 32 s)		

(Continued)

# MB89980 Series

(Continued)

Part number Parameter	MB89983	MB89P985	MB89PV980
External interrupt 1 (wake-up function)	4 independent channels (edge selectability) Rising edge/falling edge selectability Used also for wake-up from stop/sleep mode. (Edge detection is also permitted in stop mode.)		
External interrupt 2	"L" level interrupts × 8 channels		
Buzzer output	1 (7 frequencies are selectable by the software.)		
Remote control transmission output	1 (Pulse width and cycle are software selectable.)		
Standby modes	Subclock mode, sleep mode, stop mode, and watch mode		
Process	CMOS		
Operating voltage*1	2.2 V to 6.0 V	2.7 V to 6.0 V	

\*1: Varies with conditions such as the operating frequency. (The operating voltage of the A/D converter is assured separately. See section "■ Electrical Characteristics.")

\*2: See section "■ Mask Options."

## ■ PACKAGE AND CORRESPONDING PRODUCTS

Package	MB89983	MB89P985	MB89PV980
FPT-64P-M09	○	○	×
FPT-64P-M03	○	○	×
MQP-64C-P01	×	×	○

○ : Available    × : Not available

Note: For more information about each package, see section "■ Package Dimensions."

---

# MB89980 Series

---

## ■ DIFFERENCES AMONG PRODUCTS

### 1. Memory Size

Before evaluating using the piggyback product, verify its differences from the product that will actually be used. Take particular care on the following points:

- The stack area, etc., is set at the upper limit of the RAM.

### 2. Current Consumption

- In the case of the MB89PV980, add the current consumed by the EPROM which is connected to the top socket.
- When operated at low speed, the product with an OTPROM (one-time PROM) or an EPROM will consume more current than the product with a mask ROM.

However, the current consumption in the sleep/stop modes is the same. (For more information, see section “■ Electrical Characteristics.”)

### 3. Mask Options

Functions that can be selected as options and how to designate these options vary by the product.

Before using options check section “■ Mask Options.”

Take particular care on the following points:

- A pull-up resistor is not selectable for P40 to P47 and P60 to P65 if they are used as LCD pins.
- A pull-up resistor is not selectable for P50 to P53 if they are used as analog input.

### 4. Pull-up resistor

Pull-up resistors of MB89P985 and MB89PV980 are selected by pull-up control register (Port 0, 1, 5), but there are no pull-up resistor for Port 2, 4 and 6 in MB89P985 and MB89PV980.

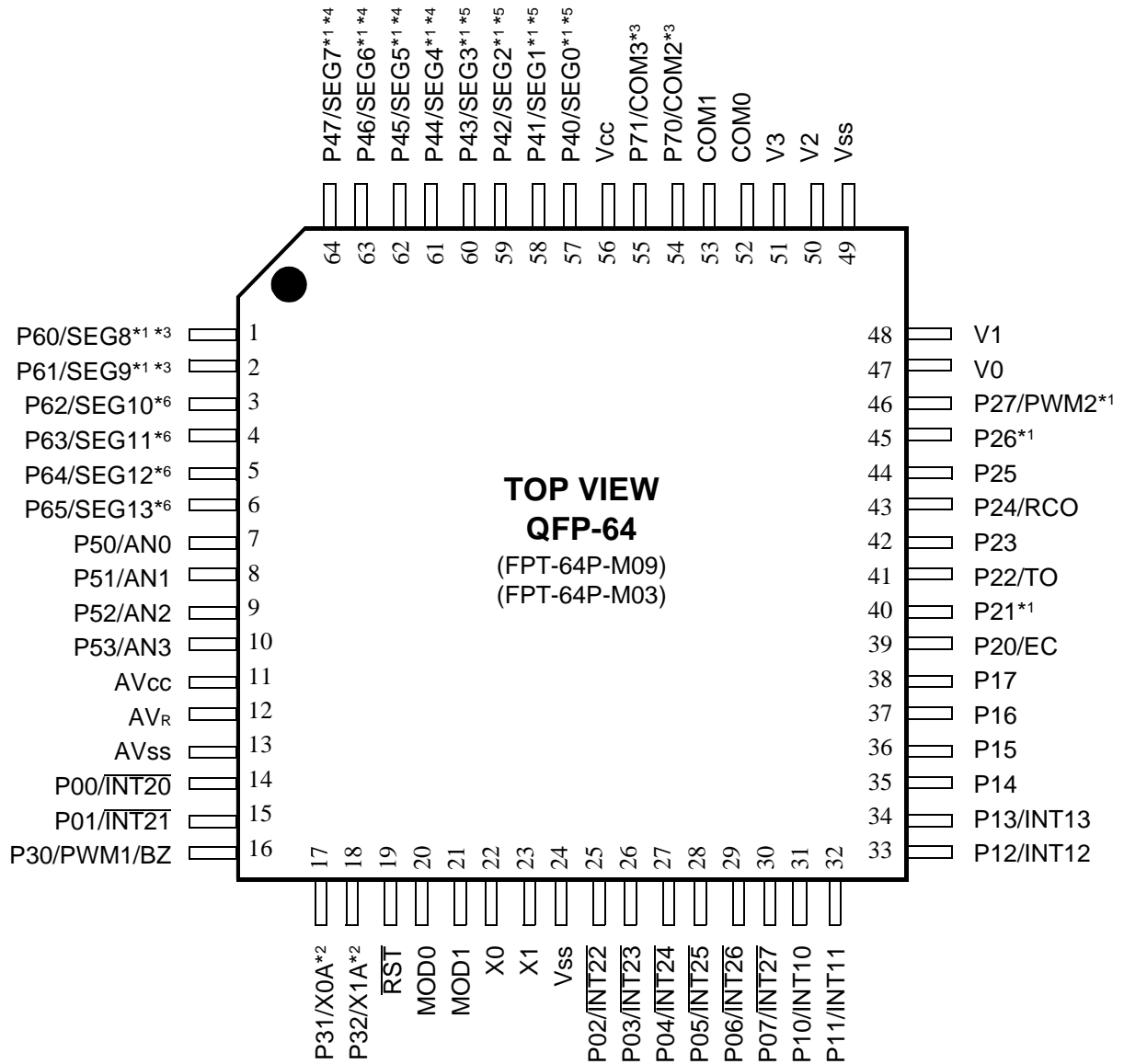
ALL pull-up resistor of MB89983 are selected by mask option (Port 0, 1, 2, 4, 5, 6)

### 5. Segment/Common port

The Segment/Port , Common/Port output in MB89P985 and MB89PV980 are selected by control register, LCR2.

The Segment/Port , Common/Port output in MB89983 are selected by mask option.

## PIN ASSIGNMENT

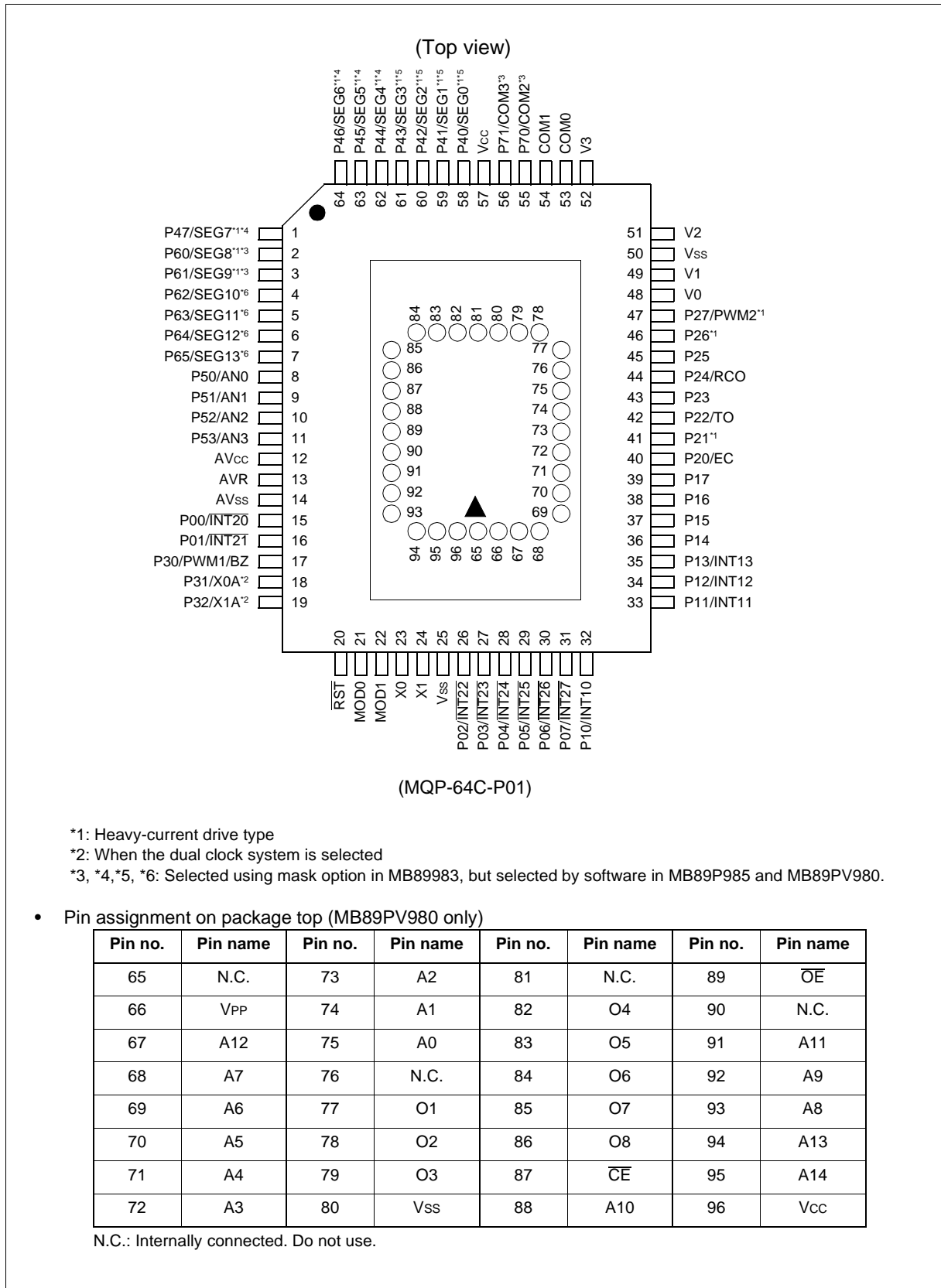


\*1: Heavy-current drive type

\*2: When the dual clock system is selected

\*3, \*4, \*5, \*6: Selected using mask option in MB89983, but selected by software in MB89P985 and MB89PV980.

# MB89980 Series



# MB89980 Series

## ■ PIN DESCRIPTION

Pin no.		Pin name	I/O circuit type		Function
LQFP*1 QFP*2	MQFP*3		MB89983	MB89P985 MB89PV980	
22	23	X0	A		Crystal or other resonator connector pins for the main clock The external clock can be connected to X0. When this is done, be sure to leave X1 open. CR oscillation selectability in model with a mask ROM only.
23	24	X1			
20	21	MOD0	C		A hysteresis input type Memory access mode setting pins Connect directly to VSS.
21	22	MOD1			
19	20	$\overline{\text{RST}}$	D		Reset I/O pin This pin is an N-ch open-drain output type with a pull-up resistor, and a hysteresis input type. "L" is output from this pin by an internal reset request (optional). The internal circuit is initialized by the input of "L".
14 to 15	15 to 16	P00/ $\overline{\text{INT20}}$ to P01/ $\overline{\text{INT21}}$	E	F	General-purpose I/O ports Also serve as an external interrupt 2 input (wake-up function). External interrupt 2 input is hysteresis input.
25 to 30	26 to 31	P02/ $\overline{\text{INT22}}$ to P07/ $\overline{\text{INT27}}$	E	F	General-purpose I/O ports Also serve as an external interrupt 2 input (wake-up function). External interrupt 2 input is hysteresis input.
31 to 34	32 to 35	P10/ $\overline{\text{INT10}}$ to P13/ $\overline{\text{INT13}}$	E	F	General-purpose I/O ports Also serve as input for external interrupt 1 input (wake-up function). External interrupt 1 input is hysteresis input.
35 to 38	36 to 39	P14 to P17	G	H	General-purpose I/O ports
39	40	P20/EC	J	K	N-ch open-drain general-purpose I/O port Also serve as the external clock input for the 8/16-bit timer/counter. The peripheral is a hysteresis input.
40	41	P21	L	M	N-ch open-drain general-purpose I/O port
41	42	P22/TO	L	M	N-ch open-drain general-purpose I/O port Also serves as an 8/16-bit timer/counter output.
42	43	P23	L	M	N-ch open-drain general-purpose I/O port
43	44	P24/RCO	L	M	N-ch open-drain general-purpose I/O port Also serves as Remote control output.
44 to 45	45 to 46	P25 to P26	L	M	N-ch open-drain general-purpose I/O port
46	47	P27/PWM2	L	M	N-ch open-drain general-purpose I/O port Also serves as the square wave or PWM wave output for the 8-bit PWM timer 2.

(Continued)

\*1: FPT-64P-M03

\*2: FPT-64P-M09

\*3: MQP-64C-P01

# MB89980 Series

(Continued)

Pin no.		Pin name	I/O circuit type		Function
LQFP*1 QFP*2	MQFP*3		MB89983	MB89P985 MB89PV980	
16	17	P30/PWM1/ BZ	I		General-purpose CMOS Output port Also serves as the square wave or PWM wave output for the 8-bit PWM timer 1, or buzzer output..
17	18	P31	S		General-purpose CMOS Input port (Hysteresis input type)
		X0A	B		Crystal or other resonator connector pins for the subclock (Subclock: 32.768 kHz) The external clock can be connected to X0A. When this is done, Be sure to leave X1A open.
18	19	P32	S		General-purpose CMOS Input port (Hysteresis input type)
		X1A	B		Crystal or other resonator connector pins for the subclock (Subclock: 32.768 kHz) The external clock can be connected to X0A. When this is done, Be sure to leave X1A open.
7 to 10	8 to 11	P50/AN0 to P53/AN3	P	Q	N-ch open-drain general-purpose output ports Also serve as the analog input for the A/D converter.
57 to 64	58 to 64 and 1	P40/SEG0 to P47/SEG7	N/O	T/O	N-ch open-drain general-purpose output ports (High current type) Also serve as an LCD controller/driver segment output.
1 to 2	2 to 3	P60/SEG8 to P61/SEG9	N/O	T/O	N-ch open-drain general-purpose output ports (High-current type) Also serve as an LCD controller/driver segment output.
3 to 6	4 to 7	P62/SEG10 to P65/SEG13	N/O	T/O	N-ch open-drain general-purpose output ports Also serve as an LCD controller/driver segment output.
54, 55	55, 56	P70/COM2, P71/COM3	N/O	T/O	N-ch open-drain general-purpose output ports Also serve as an LCD controller/driver common output.
52, 53	53, 54	COM0, COM1	O		LCD controller/driver common output

(Continued)

\*1: FPT-64P-M03

\*2: FPT-64P-M09

\*3: MQP-64C-P01



# MB89980 Series

(Continued)

Pin no.	Pin name	I/O circuit type		Function	
		MB89983	MB89P985 MB89PV980		
47, 48, 50, 51	48, 49 51, 52	V0 to V3	—	—	LCD driving power supply pins.
56	57	Vcc	—	—	Power supply pin
24, 49	25, 50	Vss	—	—	Power supply (GND) pin
11	12	AVcc	—	—	A/D converter power supply pin
12	13	AVR	—	—	A/D converter reference voltage input pin
13	14	AVss	—	—	A/D converter power supply pin Use this pin at the same voltage as VSS.

\*1: FPT-64P-M03

\*2: FPT-64P-M09

\*3: MQP-64C-P01

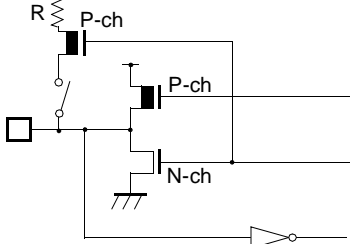
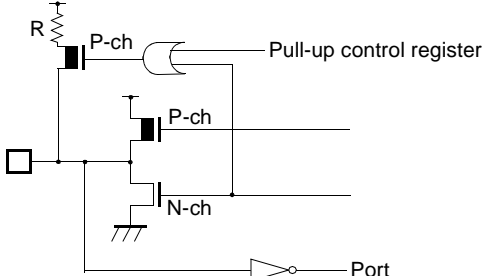
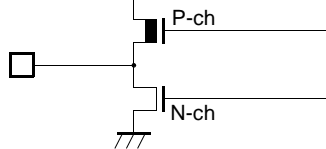
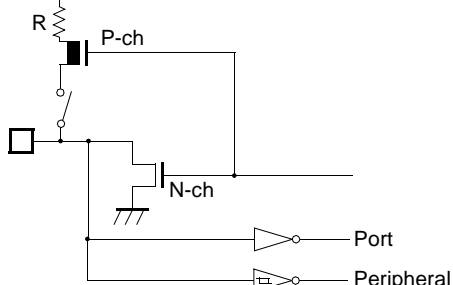
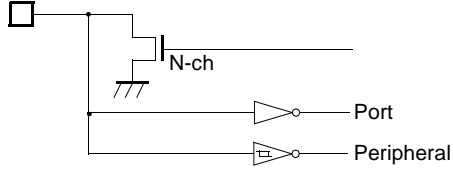
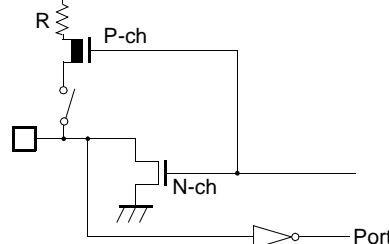
# MB89980 Series

## ■ I/O CIRCUIT TYPE

Type	Circuit	Remarks
A		<p>Main clock (main clock crystal oscillator)</p> <ul style="list-style-type: none"> <li>At an oscillation feedback resistor of approximately 1 M<math>\Omega</math>/5.0 V</li> <li>CR oscillation is selectable for MB89983 only</li> </ul>
B		<p>Subclock (subclock crystal oscillator)</p> <ul style="list-style-type: none"> <li>At an oscillation feedback resistor of approximately 4.5 M<math>\Omega</math>/5.0 V</li> </ul>
C		<ul style="list-style-type: none"> <li>Hysteresis input</li> <li>At a pull-down resistor (P-ch) of approximately 50 k<math>\Omega</math>/5.0 V</li> </ul>
D		<ul style="list-style-type: none"> <li>At an output pull-up resistor (P-ch) of approximately 50 k<math>\Omega</math>/5.0 V</li> <li>Hysteresis input</li> </ul>
E		<ul style="list-style-type: none"> <li>CMOS output</li> <li>CMOS input</li> <li>The peripheral is a hysteresis input type.</li> <li>Pull-up resistor is approximately 50 k<math>\Omega</math>/5.0 V</li> <li>Pull-up resistor is selected by mask option.</li> </ul>
F		<ul style="list-style-type: none"> <li>CMOS output</li> <li>CMOS input</li> <li>The peripheral is a hysteresis input type.</li> <li>Pull-up resistor is approximately 50 k<math>\Omega</math>/5.0 V</li> <li>Pull-up resistor is selected by pull-up control register</li> </ul>

(Continued)

(Continued)

Type	Circuit	Remarks
G		<ul style="list-style-type: none"> <li>• CMOS output</li> <li>• CMOS input</li> <li>• Pull-up resistor is approximately 50 kΩ/5.0 V</li> <li>• Pull-up resistor is selected by mask option.</li> </ul>
H		<ul style="list-style-type: none"> <li>• CMOS output</li> <li>• CMOS input</li> <li>• Pull-up resistor is approximately 50 kΩ/5.0 V</li> <li>• Pull-up resistor is selected by pull-up control register</li> </ul>
I		<ul style="list-style-type: none"> <li>• CMOS output</li> </ul>
J		<ul style="list-style-type: none"> <li>• N-ch open-drain output</li> <li>• CMOS input</li> <li>• The peripheral is a hysteresis input type.</li> <li>• Pull-up resistor is approximately 50 kΩ/5.0 V</li> <li>• Pull-up resistor is selected by mask option.</li> </ul>
K		<ul style="list-style-type: none"> <li>• N-ch open-drain output</li> <li>• CMOS input</li> <li>• The peripheral is a hysteresis input type.</li> </ul>
L		<ul style="list-style-type: none"> <li>• N-ch open-drain output</li> <li>• CMOS input</li> <li>• P21, P26, and P27 are a heavy-current drive type.</li> <li>• Pull-up resistor is approximately 50 kΩ/5.0 V</li> <li>• Pull-up resistor is selected by mask option.</li> </ul>

(Continued)

# MB89980 Series

(Continued)

Type	Circuit	Remarks
M		<ul style="list-style-type: none"> <li>N-ch open-drain output</li> <li>CMOS input</li> <li>P21, P26, and P27 are a heavy-current drive type.</li> </ul>
N		<ul style="list-style-type: none"> <li>N-ch open-drain output</li> <li>Pull-up resistor is approximately 50 kΩ/5.0 V</li> <li>Pull-up resistor is selected by mask option.</li> </ul>
O		<ul style="list-style-type: none"> <li>LCD controller/driver common/segment output</li> </ul>
P		<ul style="list-style-type: none"> <li>N-ch open-drain output</li> <li>Analog input (A/D converter)</li> <li>Pull-up resistor is approximately 50 kΩ/5.0 V</li> <li>Pull-up resistor is selected by mask option.</li> </ul>
Q		<ul style="list-style-type: none"> <li>N-ch open-drain output</li> <li>Analog input (A/D converter)</li> <li>Pull-up resistor is approximately 50 kΩ/5.0 V</li> <li>Pull-up resistor is selected by pull-up control register</li> </ul>
S		<ul style="list-style-type: none"> <li>Hysteresis input</li> </ul>
T		<ul style="list-style-type: none"> <li>N-ch open-drain output</li> </ul>

## ■ HANDLING DEVICES

### 1. Preventing Latchup

Latchup may occur on CMOS ICs if voltage higher than  $V_{CC}$  or lower than  $V_{SS}$  is applied to input and output pins other than medium- to high-voltage pins or if higher than the voltage which shows on “1. Absolute Maximum Ratings” in section “■ Electrical Characteristics” is applied between  $V_{CC}$  to  $V_{SS}$ .

When latchup occurs, power supply current increases rapidly and might thermally damage elements. When using, take great care not to exceed the absolute maximum ratings.

Also, take care to prevent the analog power supply ( $AV_{CC}$  and  $AVR$ ) and analog input from exceeding the digital power supply ( $V_{CC}$ ) when the analog system power supply is turned on and off.

### 2. Treatment of Unused Input Pins

Leaving unused input pins open could cause malfunctions. They should be connected to a pull-up or pull-down resistor.

### 3. Treatment of Power Supply Pins on Microcontrollers with A/D Converters

Connect to be  $AV_{CC} = V_{CC}$  and  $AV_{SS} = AVR = V_{SS}$  even if the A/D converters are not in use.

### 4. Treatment of N.C. Pin

Be sure to leave (internally connected) N.C. pins open.

### 5. Power Supply Voltage Fluctuations

Although  $V_{CC}$  power supply voltage is assured to operate within the rated range, a rapid fluctuation of the voltage could cause malfunctions, even if it occurs within the rated range. Stabilizing voltage supplied to the IC is therefore important. As stabilization guidelines, it is recommended to control power so that  $V_{CC}$  ripple fluctuations (P-P value) will be less than 10% of the standard  $V_{CC}$  value at the commercial frequency (50 to 60 Hz) and the transient fluctuation rate will be less than 0.1 V/ms at the time of a momentary fluctuation such as when power is switched.

### 6. Precautions when Using an External Clock

Even when an external clock is used, oscillation stabilization time is required for power-on reset (optional) and wake-up from stop mode.

### 7. Treatment of two $V_{SS}$ pins

Two  $V_{SS}$  pins should be connected together externally.

### 8. Treatment of input port pins in standby mode

To avoid current leakage, it is recommended to remain a known logic level of input port pins during the standby mode.

# MB89980 Series

## ■ PROGRAMMING TO THE EPROM ON THE MB89P985

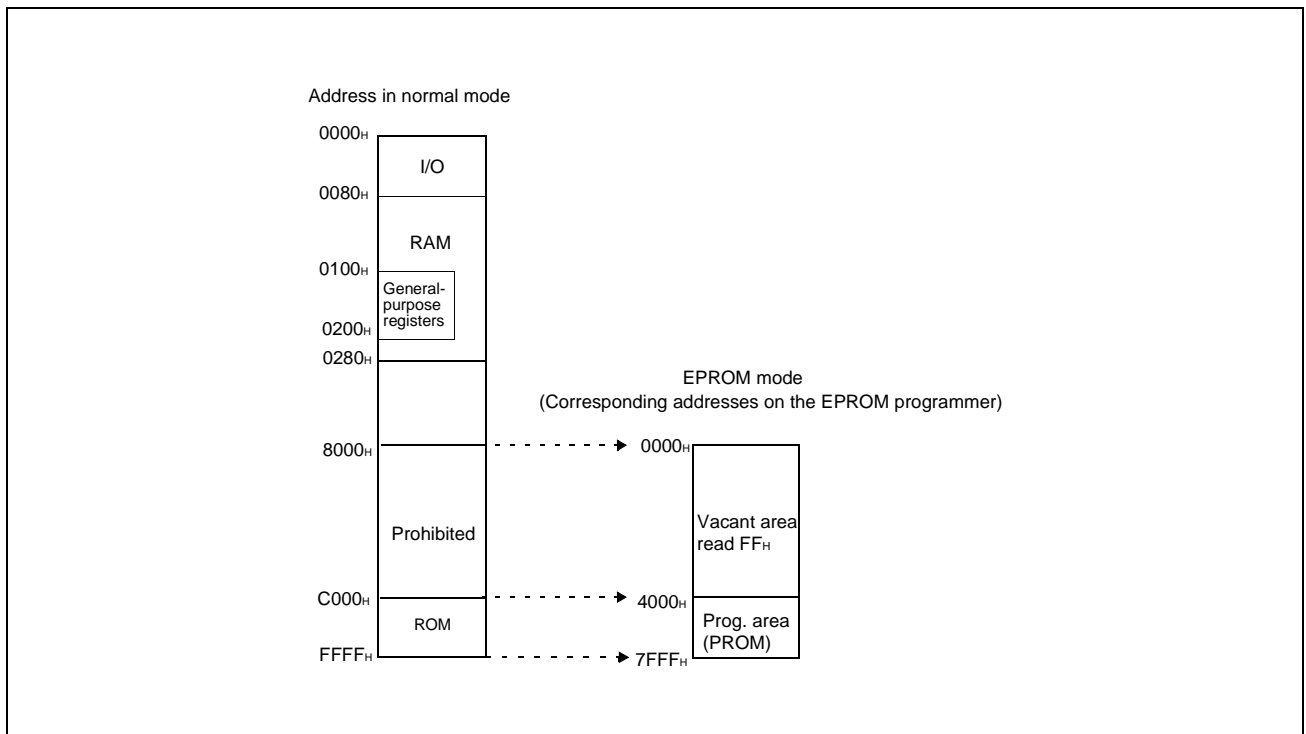
The MB89P985 is an OTPROM version of the MB89980 series.

### 1. Features

- 16-Kbyte PROM on chip
- Equivalency to the MBM27C256A in EPROM mode (when programmed with the EPROM programmer)

### 2. Memory Space

Memory space in EPROM mode is diagrammed below.



### 3. Programming to the EPROM

In EPROM mode, the MB89P985 functions equivalent to the MBM27C256A. This allows the PROM to be programmed with a general-purpose EPROM programmer (the electronic signature mode cannot be used) by using the dedicated socket adapter.

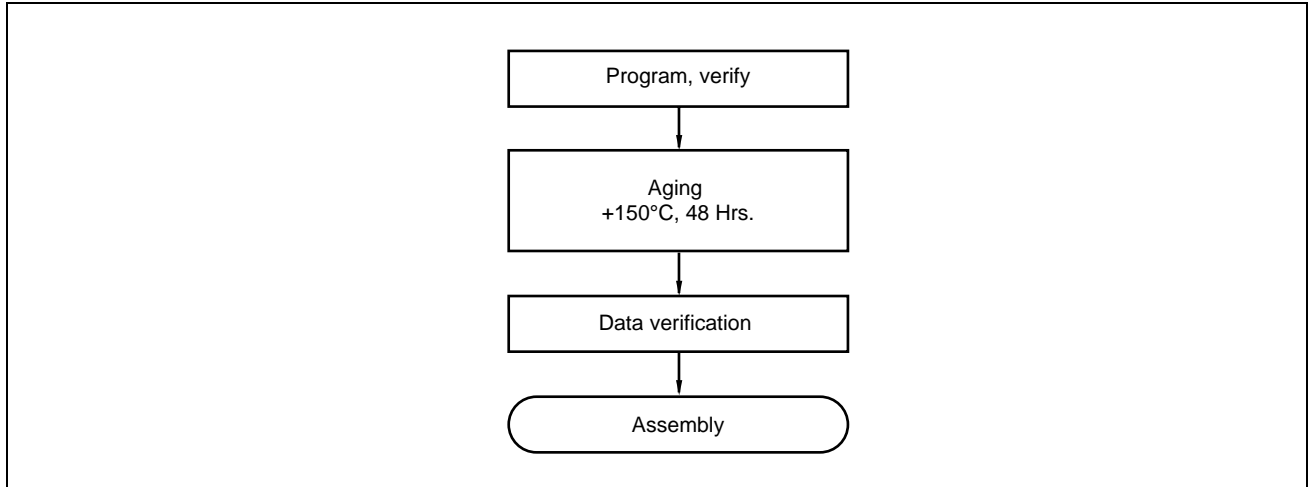
#### • Programming procedure

- (1) Set the EPROM programmer to the MBM27C256A.
- (2) Load program data into the EPROM programmer at 4000<sub>H</sub> to 7FFF<sub>H</sub> (note that addresses C000<sub>H</sub> to FFFF<sub>H</sub> while operating as a single chip assign to 4000<sub>H</sub> to 7FFF<sub>H</sub> in EPROM mode).
- (3) Program with the EPROM programmer.

## ■ HANDLING THE MB89P985

### 1. Recommended Screening Conditions

High-temperature aging is recommended as the pre-assembly screening procedure.



### 2. Programming Yield

All bits cannot be programmed at Fujitsu shipping test to a blanked OTPROM microcomputer, due to its nature. For this reason, a programming yield of 100% cannot be assured at all times.

### 3. EPROM Programmer Socket Adapter

Package	Compatible socket adapter
FPT-64P-M03	TBD
FPT-64P-M09	TBD

Inquiry: Sun Hayato Co., Ltd.: TEL 81-3-3802-5760

# MB89980 Series

## ■ PROGRAMMING TO THE EPROM WITH PIGGYBACK/EVALUATION DEVICE

### 1. EPROM for Use

MBM27C256A-20TV

### 2. Programming Socket Adapter

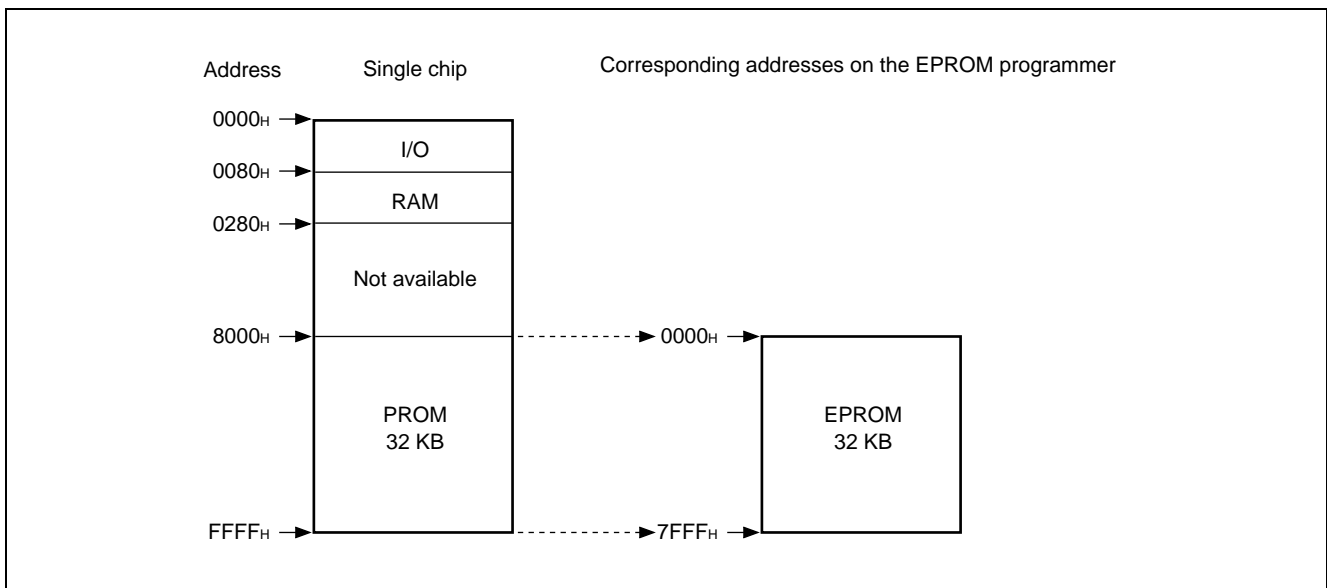
To program to the PROM using an EPROM programmer, use the socket adapter (manufacturer: Sun Hayato Co., Ltd.) listed below.

Package	Adapter socket part number
LCC-32 (Rectangle)	ROM-32LC-28DP-YG

Inquiry: Sun Hayato Co., Ltd.: TEL 81-3-3802-5760

### 3. Memory Space

Memory space in each mode, such as 32-Kbyte PROM, option area is diagrammed below.

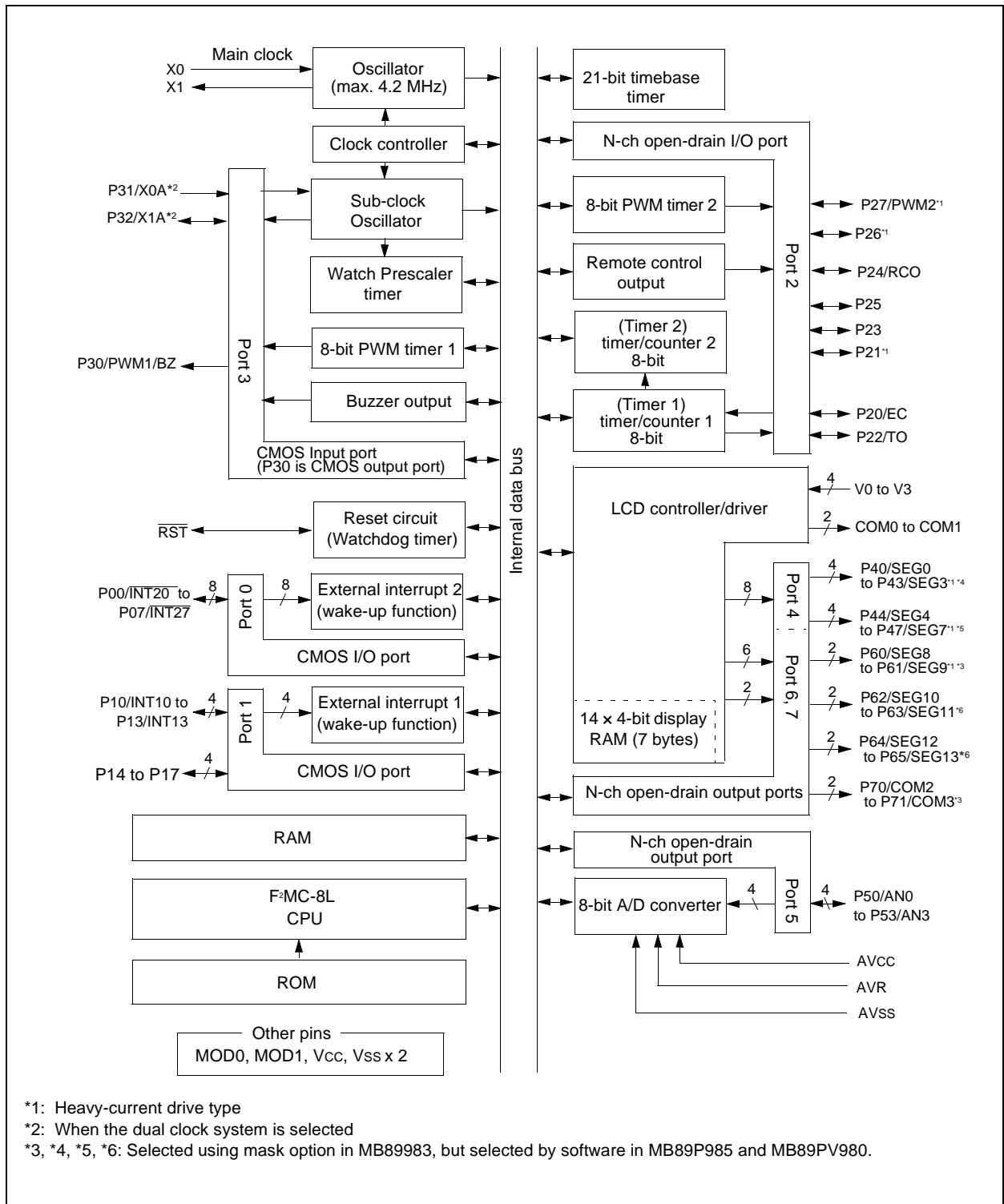


### 4. Programming to the EPROM

- (1) Set the EPROM programmer to the MBM27C256A.
- (2) Load program data into the EPROM programmer at 0000H to 7FFFH.
- (3) Program to 0000H to 7FFFH with the EPROM programmer.



## ■ BLOCK DIAGRAM

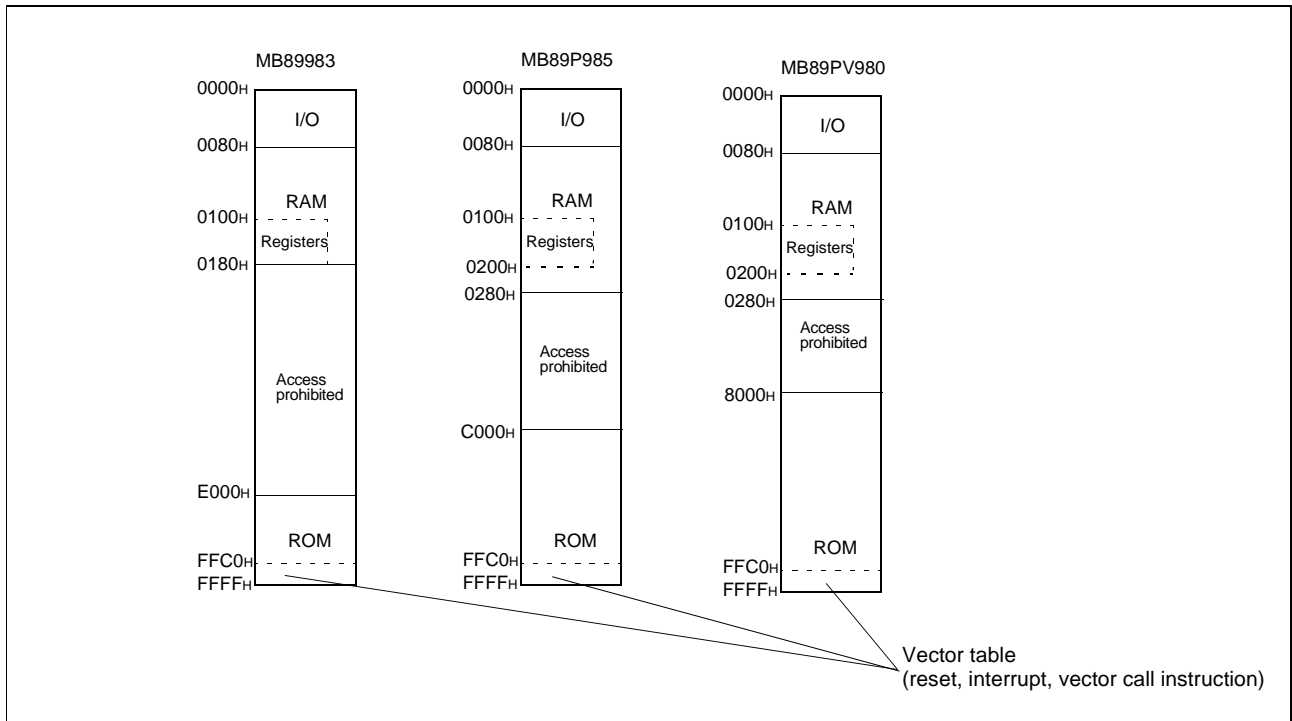


# MB89980 Series

## ■ CPU CORE

### 1. Memory Space

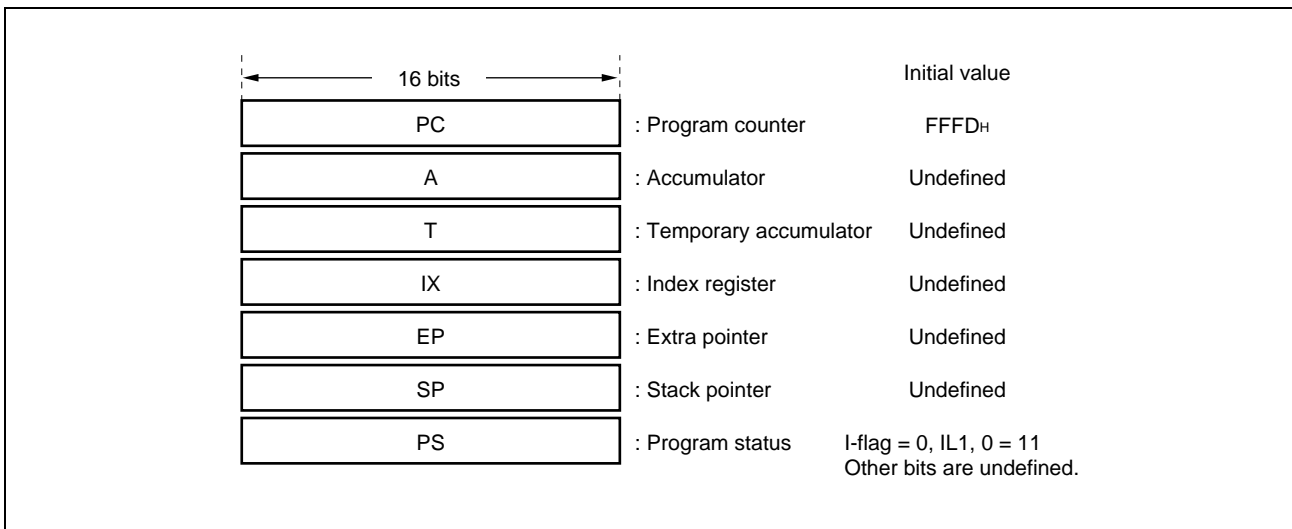
The microcontrollers of the MB89980 series offer a memory space of 64 Kbytes for storing all of I/O, data, and program areas. The I/O area is located at the lowest address. The data area is provided immediately above the I/O area. The data area can be divided into register, stack, and direct areas according to the application. The program area is located at exactly the opposite end, that is, near the highest address. Provide the tables of interrupt reset vectors and vector call instructions toward the highest address within the program area. The memory space of the MB89980 series is structured as illustrated below.



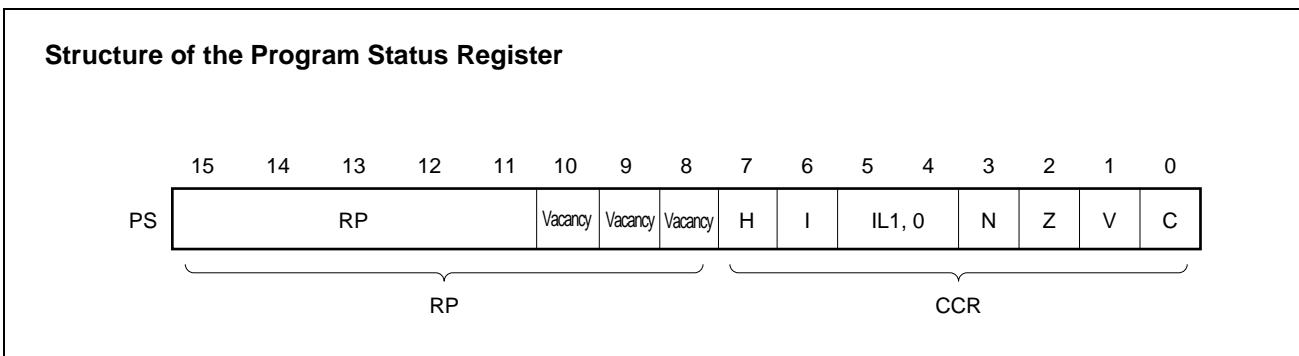
## 2. Registers

The F<sup>2</sup>MC-8L family has two types of registers; dedicated registers in the CPU and general-purpose registers in the memory. The following dedicated registers are provided:

- Program counter (PC): A 16-bit register for indicating instruction storage positions
- Accumulator (A): A 16-bit temporary register for storing arithmetic operations, etc. When the instruction is an 8-bit data processing instruction, the lower byte is used.
- Temporary accumulator (T): A 16-bit register which performs arithmetic operations with the accumulator. When the instruction is an 18-bit data processing instruction, the lower byte is used.
- Index register (IX): A 16-bit register for index modification
- Extra pointer (EP): A 16-bit pointer for indicating a memory address
- Stack pointer (SP): A 16-bit register for indicating a stack area
- Program status (PS): A 16-bit register for storing a register pointer, a condition code

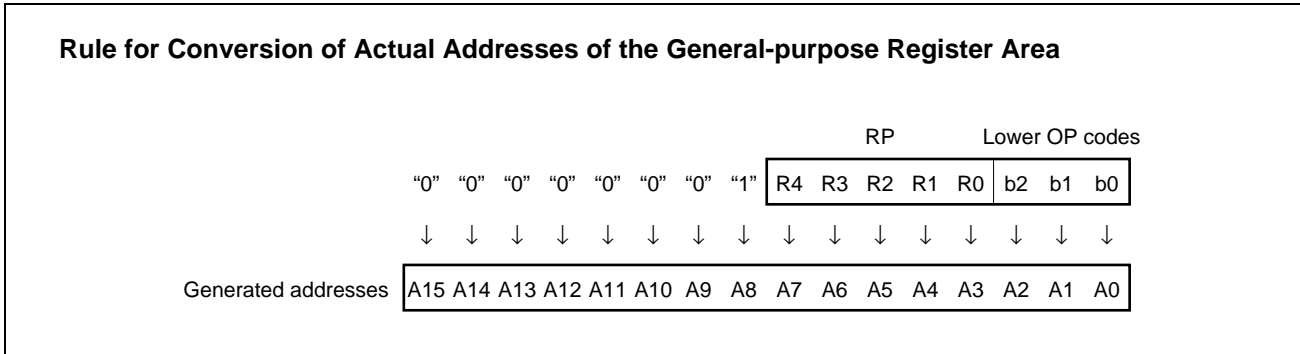


The PS can further be divide into higher 8 bits for use as a register bank pointer (RP) and the lower 8 bits for use as a condition code register (CCR). (See the diagram below.)



# MB89980 Series

The RP indicates the address of the register bank currently in use. The relationship between the pointer contents and the actual address is based on the conversion rule illustrated below.



The CCR consists of bits indicating the results of arithmetic operations and the contents of transfer data and bits for control of CPU operations at the time of an interrupt.

- H-flag: Set when a carry or a borrow from bit 3 to bit 4 occurs as a result of an arithmetic operation. Cleared otherwise. This flag is for decimal adjustment instructions.
- I-flag: Interrupt is allowed when this flag is set to 1. Interrupt is prohibited when the flag is set to 0. Set to 0 when reset.
- IL1, 0: Indicates the level of the interrupt currently allowed. Processes an interrupt only if its request level is higher than the value indicated by this bit.

IL1	ILO	Interrupt level	High-low
0	0	1	High ↑ ↓ Low = no interrupt
0	1		
1	0	2	
1	1	3	

- N-flag: Set if the MSB is set to 1 as the result of an arithmetic operation. Cleared when the bit is set to 0.
- Z-flag: Set when an arithmetic operation results in 0. Cleared otherwise.
- V-flag: Set if the complement on 2 overflows as a result of an arithmetic operation. Reset if the overflow does not occur.
- C-flag: Set when a carry or a borrow from bit 7 occurs as a result of an arithmetic operation. Cleared otherwise. Set the shift-out value in the case of a shift instruction.

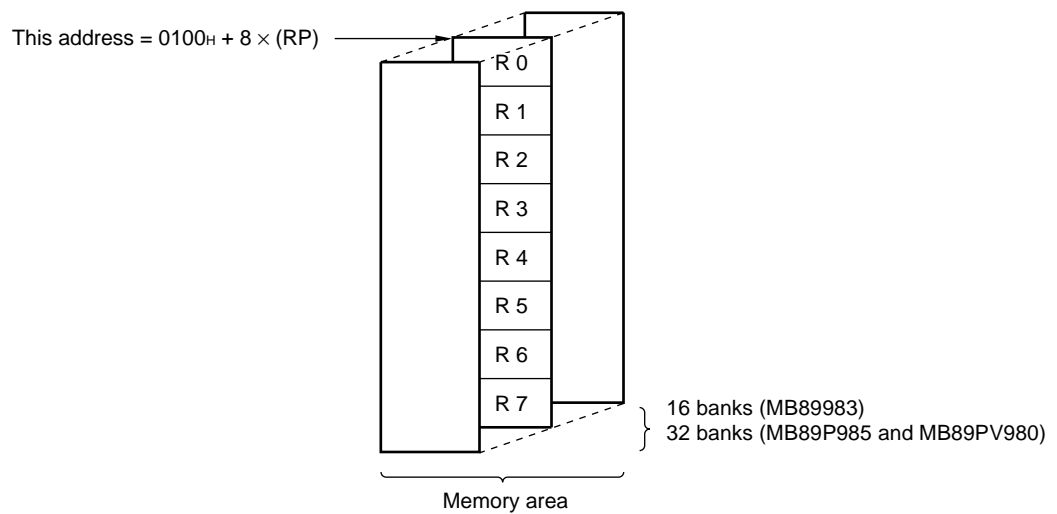
The following general-purpose registers are provided:

General-purpose registers: An 8-bit register for storing data

The general-purpose registers are 8 bits and located in the register banks of the memory. One bank contains eight registers. Up to a total of 16 banks can be used on the MB89983 (RAM  $256 \times 8$  bits). Up to a total of 32 banks can be used on the MB89P985 and MB89PV980 (RAM  $512 \times 8$  bits). The bank currently in use is indicated by the register bank pointer (RP).

Note: The number of register banks that can be used varies with the RAM size.

## Register Bank Configuraiton



# MB89980 Series

## ■ I/O MAP

Address	Read/write	Register name	Register description
00H	R/W	PDR0	Port 0 data register
01H	W	DDR0	Port 0 data direction register
02H	R/W	PDR1	Port 1 data register
03H	W	DDR1	Port 1 data direction register
04H	R/W	PDR2	Port 2 data register
05H	W	DDR2	Port 2 data direction register
06H			(Vacancy)
07H	R/W	SYCC	System clock control register
08H	R/W	STBC	Standby control register
09H	R/W	WDTC	Watchdog timer control register
0AH	R/W	TBTC	Timebase timer control register
0BH	R/W	WPCR	Watch prescaler control register
0CH	R/W	PDR3	Port 3 data register
0DH			(Vacancy)
0EH	R/W	PDR4	Port 4 data register
0FH	R/W	PDR5	Port 5 data register
10H	R/W	BZCR	Buzzer register
11H			(Vacancy)
12H	R/W	PDR6	Port 6 data register
13H	R/W	PDR7	Port 7 data register
14H	R/W	RCR1	Remote control transmission register 1
15H	R/W	RCR2	Remote control transmission register 2
16H to 17H			(Vacancy)
18H	R/W	T2CR	Timer 2 control register
19H	R/W	T1CR	Timer 1 control register
1AH	R/W	T2DR	Timer 2 data register
1BH	R/W	T1DR	Timer 1 data register
1CH - 1DH			(Vacancy)
1EH	R/W	CNTR1	PWM 1 control register
1FH	W	COMR1	PWM 1 compare register
20H	R/W	CNTR2	PWM 2 control register
21H	W	COMR2	PWM 2 compare register
22H to 2CH			(Vacancy)
2DH	R/W	ADC1	A/D control register 1
2EH	R/W	ADC2	A/D control register 2
2FH	R/W	ADCD	A/D data register
30H	R/W	EIE1	External interrupt 1 control register
31H	R/W	EIF1	External interrupt 1 flag register

(Continued)

# MB89980 Series

(Continued)

Address	Read/write	Register name	Register description
32H	R/W	EIE2	External interrupt 2 control register
33H	R/W	EIF2	External interrupt 2 flag register
34H to 3FH			(Vacancy)
40H	R/W	PURR0	Pull-up control register 0 (For MB89P985/PV980 only)
41H	R/W	PURR1	Pull-up control register 1 (For MB89P985/PV980 only)
42H	R/W	PURR5	Pull-up control register 5 (For MB89P985/PV980 only)
43H to 5FH			(Vacancy)
60H to 66H	R/W	VRAM	Display RAM
67H to 71H			(Vacancy)
72H	R/W	LCR1	LCD control register 1
73H	R/W	LCR2	LCD control register 2 (For MB89P985/PV980 only)
74H to 7BH			(Vacancy)
7CH	W	ILR1	Interrupt level setting register 1
7DH	W	ILR2	Interrupt level setting register 2
7EH	W	ILR3	Interrupt level setting register 3
7FH	Access prohibited	ITR	Interrupt test register

**Notes: Do not use vacancies.**

**Notes: Read/write access symbols :**

R/W : Readable and writable

R : Read-only

W : Write-only

# MB89980 Series

## ■ ELECTRICAL CHARACTERISTICS

### 1. Absolute Maximum Ratings

(AV<sub>SS</sub> = V<sub>SS</sub> = 0.0 V)

Parameter	Symbol	Value		Unit	Remarks
		Min.	Max.		
Power supply voltage	V <sub>CC</sub>	V <sub>SS</sub> - 0.3	V <sub>SS</sub> + 7.0	V	
	AV <sub>CC</sub>	V <sub>SS</sub> - 0.3	V <sub>SS</sub> + 7.0	V	AV <sub>CC</sub> must not exceed V <sub>CC</sub> + 0.3 V.
	AVR	V <sub>SS</sub> - 0.3	V <sub>SS</sub> + 7.0	V	AVR must not exceed AV <sub>CC</sub> + 0.3 V.
LCD power supply voltage	V0 to V3	V <sub>SS</sub> - 0.3	V <sub>SS</sub> + 7.0	V	V0 to V3 must not exceed V <sub>CC</sub> .
Input voltage	V <sub>I1</sub>	V <sub>SS</sub> - 0.3	V <sub>CC</sub> + 0.3	V	V <sub>I1</sub> must not exceed V <sub>SS</sub> + 7.0 V. All pins except P20 to P27 without a pull-up resistor
	V <sub>I2</sub>	V <sub>SS</sub> - 0.3	V <sub>SS</sub> + 7.0	V	P20 to P27 without a pull-up resistor
Output voltage	V <sub>O1</sub>	V <sub>SS</sub> - 0.3	V <sub>CC</sub> + 0.3	V	V <sub>O1</sub> must not exceed V <sub>SS</sub> + 7.0 V. All pins except P20 to P27, P40 to P47, P60 to P65, P70 and P71 without a pull-up resistor
	V <sub>O2</sub>	V <sub>SS</sub> - 0.3	V <sub>SS</sub> + 7.0	V	P20 to P27, P40 to P47, P60 to P65, P70 and P71 without a pull-up resistor
"L" level maximum output current	I <sub>OL1</sub>	—	10	mA	All pins except P21, P26, P27, P40 to P47, P60 and P61
	I <sub>OL2</sub>	—	20	mA	P21, P26, P27, P40 to P47, P60 and P61
"L" level average output current	I <sub>OLAV1</sub>	—	4	mA	All pins except P21, P26, P27, P40 to P47, P60, P61 and power supply pins Average value (operating current × operating rate)
	I <sub>OLAV2</sub>	—	8	mA	P21, P26, P27, P40 to P47, P60 and P61 Average value (operating current × operating rate)
"L" level total maximum output current	∑I <sub>OL</sub>	—	100	mA	Peak value
"L" level total average output current	∑I <sub>OLAV</sub>	—	40	mA	Average value (operating current × operating rate)
"H" level maximum output current	I <sub>OH1</sub>	—	-5	mA	All pins except P30 and power supply pins
	I <sub>OH2</sub>	—	-10	mA	P30

(Continued)



# MB89980 Series

(Continued)

(AV<sub>SS</sub> = V<sub>SS</sub> = 0.0 V)

Parameter	Symbol	Value		Unit	Remarks
		Min.	Max.		
“H” level average output current	I <sub>OHAV1</sub>	—	−2	mA	All pins except P30 and power supply pins Average value (operating current × operating rate)
	I <sub>OHAV2</sub>	—	−4	mA	P30 Average value (operating current × operating rate)
“H” level total maximum output current	∑I <sub>OH</sub>	—	−50	mA	Peak value
“H” level total average output current	∑I <sub>OHAV</sub>	—	−10	mA	Average value (operating current × operating rate)
Power consumption	P <sub>D</sub>	—	300	mW	
Operating temperature	T <sub>A</sub>	−40	+85	°C	
Storage temperature	T <sub>stg</sub>	−55	+150	°C	

Precautions: Permanent device damage may occur if the above “Absolute Maximum Ratings” are exceeded. Functional operation should be restricted to the conditions as detailed in the operational sections of this data sheet. Exposure to absolute maximum rating conditions for extended periods may affect device reliability.

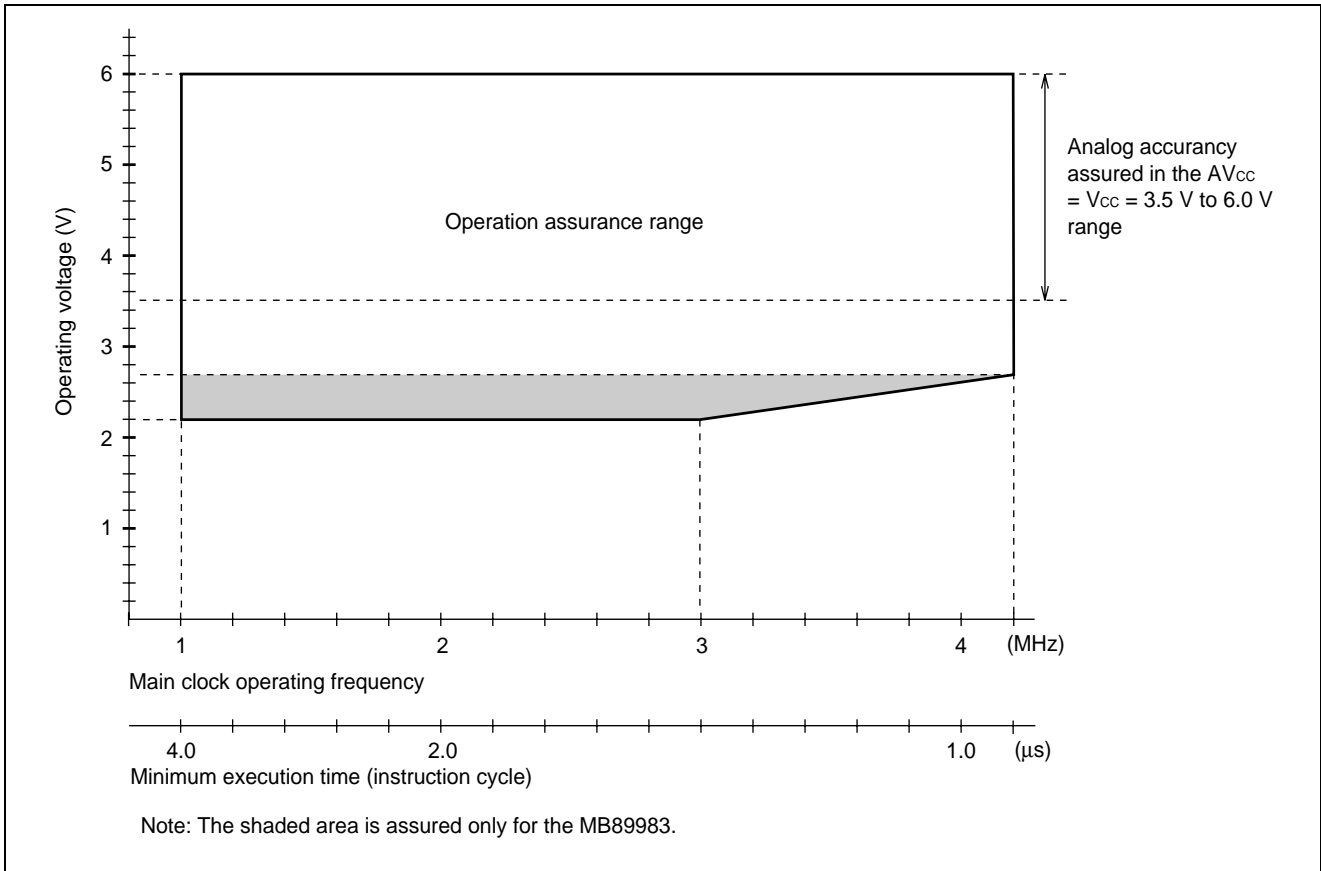
## 2. Recommended Operating Conditions

(AV<sub>SS</sub> = V<sub>SS</sub> = 0.0 V)

Parameter	Symbol	Value		Unit	Remarks
		Min.	Max.		
Power supply voltage	V <sub>CC</sub> AV <sub>CC</sub>	2.2 <sup>*1</sup>	6.0 <sup>*1</sup>	V	Normal operation assurance range <sup>*1</sup>
		2.2 <sup>*1</sup>	4.0	V	Dual-clock mask ROM products
		1.5	6.0	V	Retains the RAM state in stop mode
	AVR	2.0	AV <sub>CC</sub>	V	Normal operation assurance range
LCD power supply voltage	V0 to V3	V <sub>SS</sub>	V <sub>CC</sub>	V	V0 to V3 pins LCD power supply range (The optimum value dependent on the LCD element in use.)
Operating temperature	T <sub>A</sub>	−40	+85	°C	

\*1: The minimum operating power supply voltage varies with the execution time (instruction cycle time) setting for the operating frequency.  
A/D converter assurance accuracy varies with the operating power supply voltage.

# MB89980 Series



**Figure 1 Operating Voltage vs. Main Clock Operating Frequency**

Figures 1 indicate the operating frequency of the external oscillator at an instruction cycle of  $4/F_{CH}$ .

Since the operating voltage range is dependent on the instruction cycle, see minimum execution time if the operating speed is switched using a gear.

**Warning:** Recommended operating conditions are normal operating ranges for the semiconductor device. All the device's electrical characteristics are warranted when operated within these ranges.

Always use semiconductor devices within the recommended operating conditions. Operation outside these ranges may adversely reliability and could result in device failure.

No warranty is made with respect to uses, operating condition, or combination not represented on the datasheet. Users considering application outside the listed conditions are advised to contact their FUJITSU representative beforehand.

# MB89980 Series

## 2. DC Characteristics

### (1) Pin DC characteristics ( $V_{CC} = +5.0\text{ V}$ )

( $V_{SS} = 0.0\text{ V}$ ,  $T_A = -40^\circ\text{C}$  to  $+85^\circ\text{C}$ )

Parameter	Symbol	Pin	Condition	Value			Unit	Remarks
				Min.	Typ.	Max.		
"H" level input voltage	$V_{IH}$	P00 to P07, P10 to P17, P20 to P27	—	$0.7 V_{CC}$	—	$V_{CC} + 0.3$	V	
	$V_{IHS}$	$\overline{RST}$ , MOD0, MOD1, EC, INT10 to INT13, INT20 to INT27		$0.8 V_{CC}$	—	$V_{CC} + 0.3$	V	
"L" level input voltage	$V_{IL}$	P00 to P07, P10 to P17, P20 to P27		$V_{SS} - 0.3$	—	$0.3 V_{CC}$	V	
	$V_{ILS}$	$\overline{RST}$ , MOD0, MOD1, EC, INT10 to INT13, INT20 to INT27		$V_{SS} - 0.3$	—	$0.2 V_{CC}$	V	
Open-drain output pin application voltage	$V_{D1}$	P20 to P27 P40 to P47, P60 to P65		$V_{SS} - 0.3$	—	$V_{SS} + 6.0$	V	P20 to P27, P40 to P47, and P60 to P65 without pull- up resistor only
	$V_{D2}$	P50 to P53		$V_{SS} - 0.3$	—	$V_{CC} + 0.3$	V	
"H" level output voltage	$V_{OH1}$	P00 to P07, P10 to P17	$I_{OH} = -2.0\text{ mA}$	2.4	—	—	V	
	$V_{OH2}$	P30	$I_{OH} = -6.0\text{ mA}$	4.0	—	—	V	
"L" level output voltage	$V_{OL1}$	P00 to P07, P10 to P17, P30	$I_{OL} = 1.8\text{ mA}$	—	—	0.4	V	
	$V_{OL2}$	P20, P22 to P25, P50 to P53, P62 to P65, P70 to P71	$I_{OL} = 4.0\text{ mA}$	—	—	0.4	V	
	$V_{OL3}$	P21, P26, P27, P40 to P47, P60, P61	$I_{OL} = 8.0\text{ mA}$	—	—	0.4	V	
	$V_{OL4}$	$\overline{RST}$	$I_{OL} = 4.0\text{ mA}$	—	—	0.4	V	
Input leakage current (Hi-z output leakage current)	$I_{LI}$	P00 to P07, P10 to P17, MOD0, MOD1, P30	$0.45\text{ V} < V_I < V_{CC}$	—	—	$\pm 5$	$\mu\text{A}$	Without pull-up resistor

(Continued)

# MB89980 Series

(Continued)

( $V_{SS} = 0.0\text{ V}$ ,  $T_A = -40^\circ\text{C}$  to  $+85^\circ\text{C}$ )

Parameter	Symbol	Pin	Condition	Value			Unit	Remarks
				Min.	Typ.	Max.		
Open-drain output leakage current	$I_{LO1}$	P20 to P27, P40 to P47, P60 to P65, P70, P71	$0.45\text{ V} < V_I < 6.0\text{ V}$	—	—	$\pm 5$	$\mu\text{A}$	Without pull-up resistor
	$I_{LO2}$	P50 to P53	$0.45\text{ V} < V_I < V_{CC}$	—	—	$\pm 5$	$\mu\text{A}$	Without pull-up resistor
Pull-up resistance	$R_{PULL}$	P00 to P07, P10 to P17, P20 to P27, P40 to P47, P50 to P53, P60 to P65, $\overline{\text{RST}}$	$V_I = 0.0\text{ V}$	25	50	100	$\text{k}\Omega$	With pull-up resistor
Common output impedance	$R_{VCOM}$	COM0 to COM3	$V_1$ to $V_3 = +5.0\text{ V}$	—	—	2.5	$\text{k}\Omega$	
Segment output impedance	$R_{VSEG}$	SEG0 to SEG13		—	—	15	$\text{k}\Omega$	
LCD divided resistance	$R_{LCD}$	—	Between $V_{CC}$ and $V_0$	300	500	750	$\text{k}\Omega$	
LCD controller/driver leakage current	$I_{LCDL}$	V0 to V3, COM0 to COM3, SEG0 to SEG13	—	—	—	$\pm 1$	$\mu\text{A}$	
Input capacitance	$C_{IN}$	Other than $V_{CC}$ , $V_{SS}$	$f = 1\text{ MHz}$	—	10	—	$\text{pF}$	

Note: For pins which serve as the segment (SEG0 to SEG13) and ports (P40 to P47, P50 to P53, and P60 to P65), see the port parameter when these pins are used as ports and the segment parameter when they are used as segments.

# MB89980 Series

## (2) Pin DC Characteristics ( $V_{CC} = +3.0\text{ V}$ )

( $V_{CC} = 3.0\text{ V}$ ,  $V_{SS} = 0.0\text{ V}$ ,  $T_A = -40^\circ\text{C}$  to  $+85^\circ\text{C}$ )

Parameter	Symbol	Pin	Condition	Value			Unit	Remarks
				Min.	Typ.	Max.		
"H" level output voltage	$V_{OH1}$	P00 to P07, P10 to P17	$I_{OH} = -1.0\text{ mA}$	2.4	—	—	V	
	$V_{OH2}$	P30	$I_{OH} = -3.0\text{ mA}$	2.4	—	—	V	
"L" level output voltage	$V_{OL1}$	P00 to P07, P10 to P17, P20 to P27, P30, P50 to P53, P62 to P65, P70 to P71	$I_{OL} = 1.8\text{ mA}$	—	—	0.4	V	
	$V_{OL2}$	$\overline{\text{RST}}$	$I_{OL} = 1.8\text{ mA}$	—	—	0.4	V	
	$V_{OL3}$	P21, P26, P27 P40 to P47, P60, P61	$I_{OL} = 3.6\text{ mA}$	—	—	0.4	V	
Pull-up resistance	$R_{PULL}$	P00 to P07, P10 to P17, P20 to P27, P40 to P47, P50 to P53, P60 to P65, P70 to P71 $\overline{\text{RST}}$	$V_I = 0.0\text{ V}$	50	100	150	k $\Omega$	With pull-up resistor

# MB89980 Series

## (3) Power Supply Current Characteristics (MB89983)

(V<sub>SS</sub> = 0.0 V, T<sub>A</sub> = -40°C to +85°C)

Parameter	Symbol	Pin	Condition	Value			Unit	Remarks
				Min.	Typ.	Max.		
Power supply current <sup>*1</sup>	I <sub>CC1</sub>	V <sub>CC</sub>	F <sub>CH</sub> = 4.2 MHz, V <sub>CC</sub> = 5.0 V t <sub>inst</sub> <sup>*2</sup> = 4/F <sub>CH</sub> Main clock operation mode	—	5.0	10.0	mA	MB89983
	I <sub>CC2</sub>		F <sub>CH</sub> = 4.2 MHz, V <sub>CC</sub> = 3.0 V t <sub>inst</sub> <sup>*2</sup> = 64/F <sub>CH</sub> Main clock operation mode	—	1.5	2.0	mA	
	I <sub>CCL</sub>		F <sub>CL</sub> = 32.768 kHz, V <sub>CC</sub> = 3.0 V t <sub>inst</sub> <sup>*2</sup> = 2/F <sub>CL</sub> Subclock operation mode	—	0.05	0.1	mA	
	I <sub>CCS1</sub>		F <sub>CH</sub> = 4.2 MHz, V <sub>CC</sub> = 5.0 V t <sub>inst</sub> <sup>*2</sup> = 4/F <sub>CH</sub> Main clock sleep mode	—	2.5	5.0	mA	
	I <sub>CCS2</sub>		F <sub>CH</sub> = 4.2 MHz, V <sub>CC</sub> = 3.0 V t <sub>inst</sub> <sup>*2</sup> = 64/F <sub>CH</sub> Main clock sleep mode	—	1.0	1.5	mA	
	I <sub>CCSL</sub>		F <sub>CL</sub> = 32.768 kHz, V <sub>CC</sub> = 3.0 V t <sub>inst</sub> <sup>*2</sup> = 2/F <sub>CL</sub> Subclock sleep mode	—	25	50	μA	
	I <sub>CCT</sub>		F <sub>CL</sub> = 32.768 kHz, V <sub>CC</sub> = 3.0 V Watch mode	—	10	15	μA	
	I <sub>CCH</sub>		T <sub>A</sub> = +25°C, V <sub>CC</sub> = 5.0 V Stop mode	—	0.1	1.0	μA	
I <sub>A</sub>	AV <sub>CC</sub>	F <sub>CH</sub> = 4.2 MHz, V <sub>CC</sub> = 5.0 V	—	1.0	3.0	mA	When A/D conversion is activated	

\*1: The power supply current is measured at the external clock, open output pins, and the external LCD dividing resistor (or external input for the reference voltage).

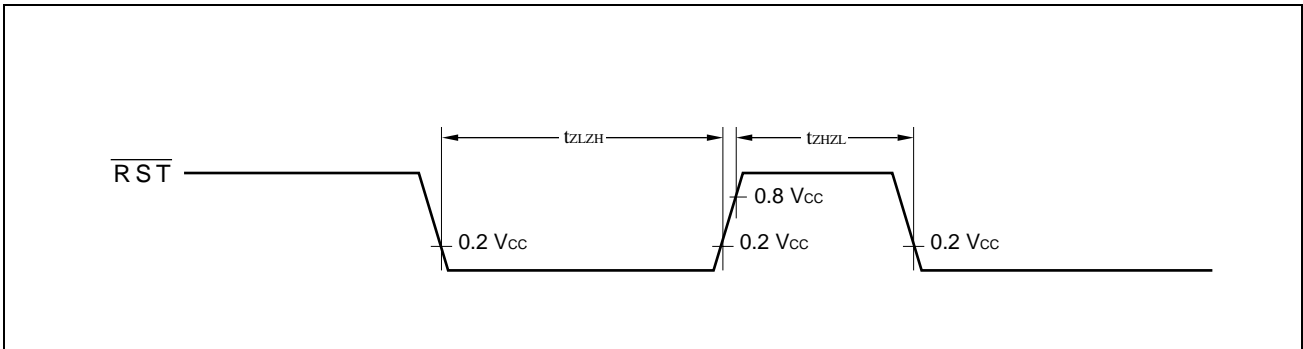
\*2: For information on t<sub>inst</sub>, see “(4) Instruction Cycle” in “4. AC Characteristics.”

## 4. AC Characteristics

### (1) Reset Timing

( $V_{CC} = +5.0\text{ V} \pm 10\%$ ,  $V_{SS} = 0.0\text{ V}$ ,  $T_A = -40^\circ\text{C}$  to  $+85^\circ\text{C}$ )

Parameter	Symbol	Condition	Value		Unit	Remarks
			Min.	Max.		
$\overline{\text{RST}}$ "L" pulse width	$t_{ZLZH}$	—	48 $t_{XCYL}$	—	ns	
$\overline{\text{RST}}$ "H" pulse width	$t_{ZHHL}$		24 $t_{XCYL}$	—	ns	

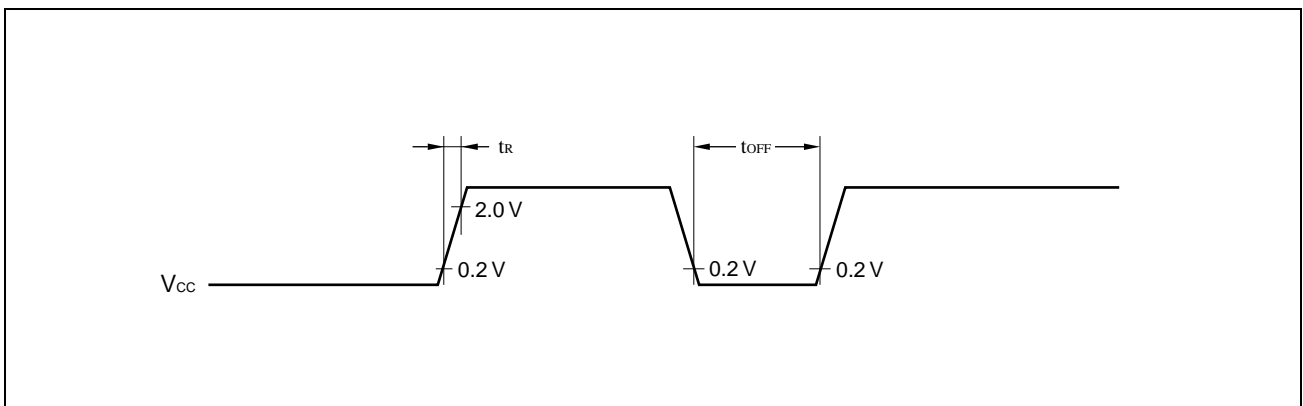


### (2) Power-on Reset

( $V_{SS} = 0.0\text{ V}$ ,  $T_A = -40^\circ\text{C}$  to  $+85^\circ\text{C}$ )

Parameter	Symbol	Condition	Value		Unit	Remarks
			Min.	Max.		
Power supply rising time	$t_R$	—	—	50	ms	Power-on reset function only
Power supply cut-off time	$t_{OFF}$	—	1	—	ms	Due to repeated operations

Note: Make sure that power supply rises within the selected oscillation stabilization time. If power supply voltage needs to be varied in the course of operation, a smooth voltage rise is recommended.



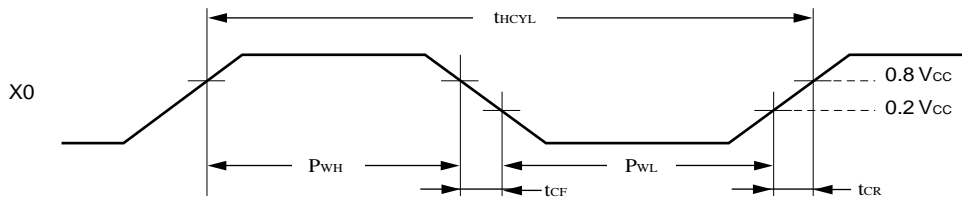
# MB89980 Series

## (3) Clock Timing

( $V_{SS} = 0.0\text{ V}$ ,  $T_A = -40^\circ\text{C}$  to  $+85^\circ\text{C}$ )

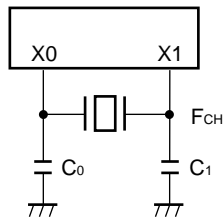
Parameter	Symbol	Pin	Value			Unit	Remarks
			Min.	Typ.	Max.		
Clock frequency	$F_{CH}$	X0, X1	1	—	4.2	MHz	Main clock
	$F_{CL}$	X0A, X1A	—	32.768	—	kHz	Subclock
Clock cycle time	$t_{HCYL}$	X0, X1	238	—	1000	ns	Main clock
	$t_{LCYL}$	X0A, X1A	—	30.5	—	$\mu\text{s}$	Subclock
Input clock pulse width	$P_{WH}$ $P_{WL}$	X0	20	—	—	ns	External clock
Input clock rising/falling time	$t_{CR}$ $t_{CF}$	X0	—	—	24	ns	

### Main Clock Timing and Conditions

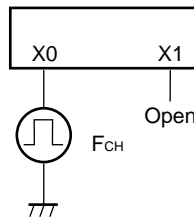


### Main Clock Conditions

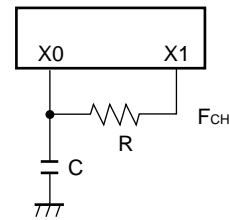
When a crystal or ceramic resonator is used



When an external clock is used

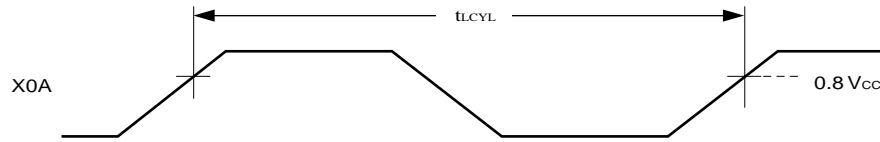


When the CR oscillation option is used



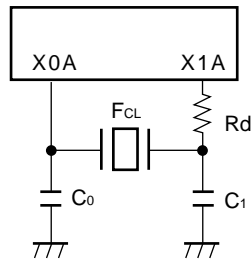


## Subclock Timing and Conditions

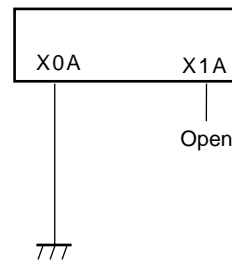


## Subclock Conditions

When a crystal or ceramic oscillator is used



When the single-clock option is used



## (4) Instruction Cycle

( $V_{SS} = 0.0 V$ ,  $T_A = -40^{\circ}C$  to  $+85^{\circ}C$ )

Parameter	Symbol	Value (typical)	Unit	Remarks
Instruction cycle (minimum execution time)	$t_{inst}$	$4/F_{CH}$ , $8/F_{CH}$ , $16/F_{CH}$ , $64/F_{CH}$	$\mu s$	$(4/F_{CH}) t_{inst} = 1.0 \mu s$ at $F_{CH} = 4 \text{ MHz}$
		$2/F_{CL}$	$\mu s$	$t_{inst} = 62 \mu s$ at $F_{CL} = 32.768 \text{ kHz}$

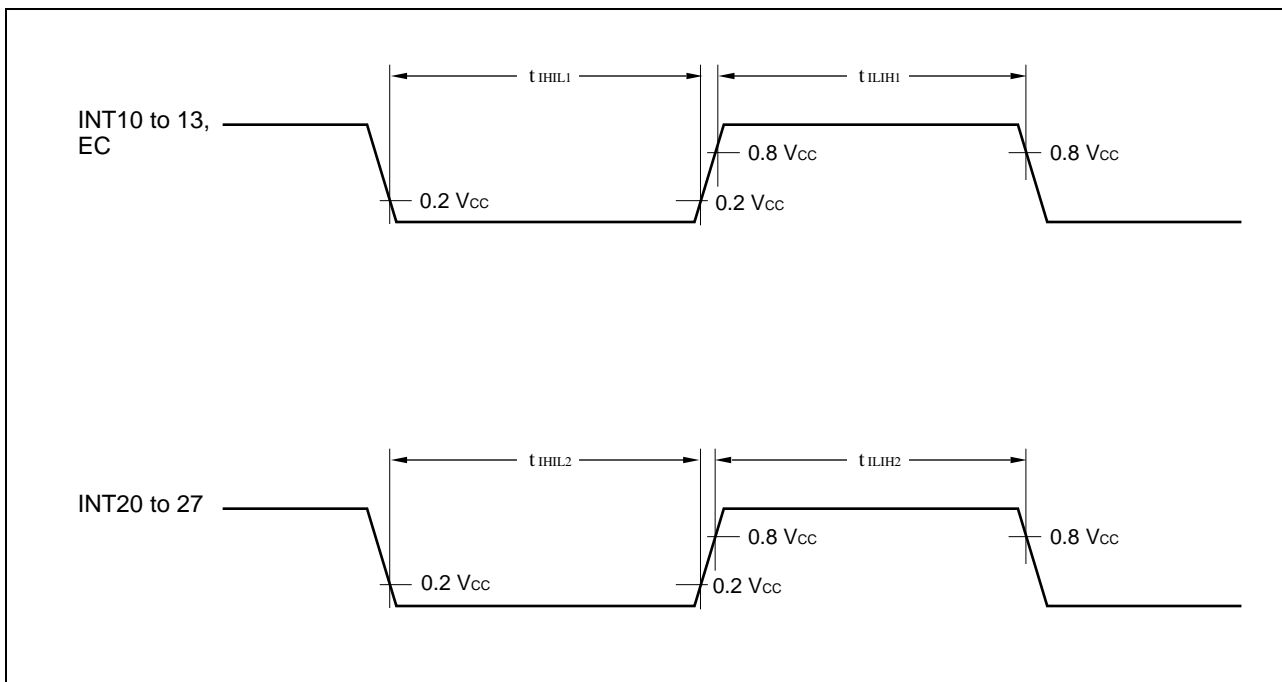
# MB89980 Series

## (5) Peripheral Input Timing

( $V_{CC} = +5.0\text{ V} \pm 10\%$ ,  $V_{SS} = 0.0\text{ V}$ ,  $T_A = -40^\circ\text{C}$  to  $+85^\circ\text{C}$ )

Parameter	Symbol	Pin	Value		Unit	Remarks
			Min.	Max.		
Peripheral input "H" pulse width 1	$t_{ILIH1}$	INT10 to INT13, EC	1 $t_{inst}^*$	—	$\mu\text{S}$	
Peripheral input "L" pulse width 1	$t_{IHIL1}$		1 $t_{inst}^*$	—	$\mu\text{S}$	
Peripheral input "H" pulse width 2	$t_{ILIH2}$	INT20 to INT27	2 $t_{inst}^*$	—	$\mu\text{S}$	
Peripheral input "L" pulse width 2	$t_{IHIL2}$		2 $t_{inst}^*$	—	$\mu\text{S}$	

\* : For information on  $t_{inst}$ , see "(4) Instruction Cycle."



## 5. A/D Converter Electrical Characteristics

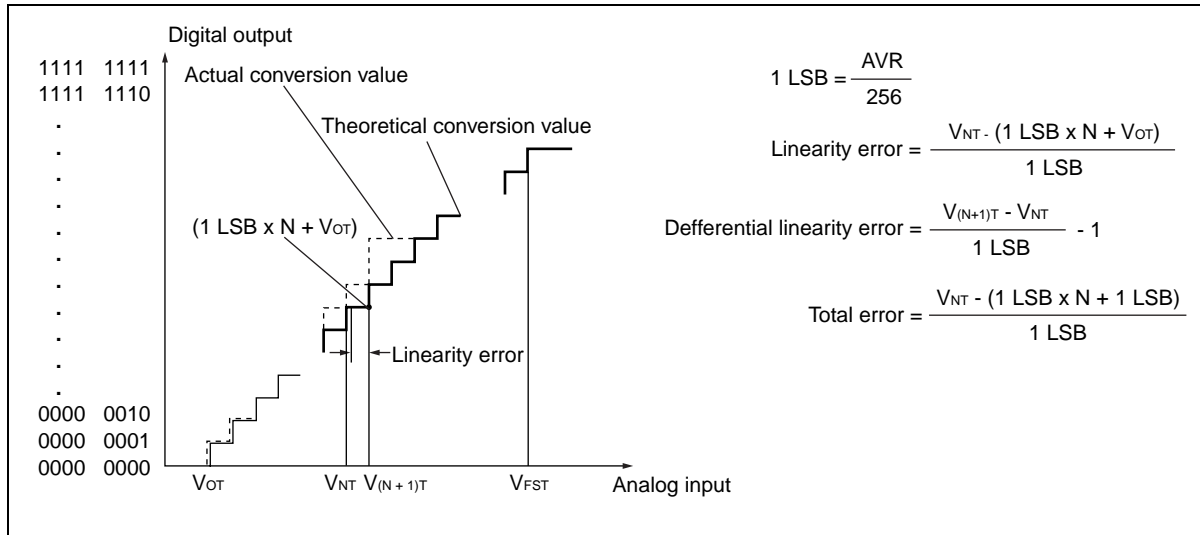
(3 MHz,  $AV_{CC} = V_{CC} = +3.5\text{ V to }+6.0\text{ V}$ ,  $AV_{SS} = V_{SS} = 0.0\text{ V}$ ,  $T_A = -40^\circ\text{C to }+85^\circ\text{C}$ )

Parameter	Symbol	Pin	Condition	Value			Unit	Remarks		
				Min.	Typ.	Max.				
Resolution	—	—	—	—	—	8	bit			
Total error			—	—	$\pm 1.5$	LSB				
Linearity error			—	—	$\pm 1.0$	LSB				
Differential linearity error			—	—	$\pm 0.9$	LSB				
Zero transition voltage	$V_{OT}$	—	$AVR = AV_{CC}$	$AV_{SS} - 1.0\text{ LSB}$	$AV_{SS} + 0.5\text{ LSB}$	$AV_{SS} + 2.0\text{ LSB}$	mV			
Full-scale transition voltage	$V_{FST}$			$AVR - 3.0\text{ LSB}$	$AVR - 1.5\text{ LSB}$	AVR	mV			
Interchannel disparity	—			—	—	0.5	LSB			
A/D mode conversion time	—	—	—	—	$44\ t_{inst}$	—	ms			
Sense mode conversion time				—	$12\ t_{inst}$	—	ms			
Analog port input current	$I_{AI}$	ANO to AN3	—	—	—	10	$\mu\text{A}$			
Analog input voltage	—		0.0	—	—	AVR	V			
Reference voltage	—	—	—	2.0	—	$AV_{CC}$	V			
Reference voltage supply current	$I_R$			AVR	$AVR = 5.0\text{ V}$ , when A/D conversion is activated	—	100	—	$\mu\text{A}$	
	$I_{RH}$					$AVR = 5.0\text{ V}$ , when A/D conversion is stopped	—	—	1	$\mu\text{A}$

### (1) A/D Glossary

- Resolution  
Analog changes that are identifiable with the A/D converter.  
When the number of bits is 8, analog voltage can be divided into  $2^8=256$ .
- Linearity error (unit: LSB)  
The deviation of the straight line connecting the zero transition point (“0000 0000” ↔ “0000 0001”) with the full-scale transition point (“1111 1111” ↔ “1111 1110”) from actual conversion characteristics
- Differential linearity error (unit: LSB)  
The deviation of input voltage needed to change the output code by 1 LSB from the theoretical value
- Total error (unit: LSB)  
The difference between theoretical and actual conversion values

# MB89980 Series



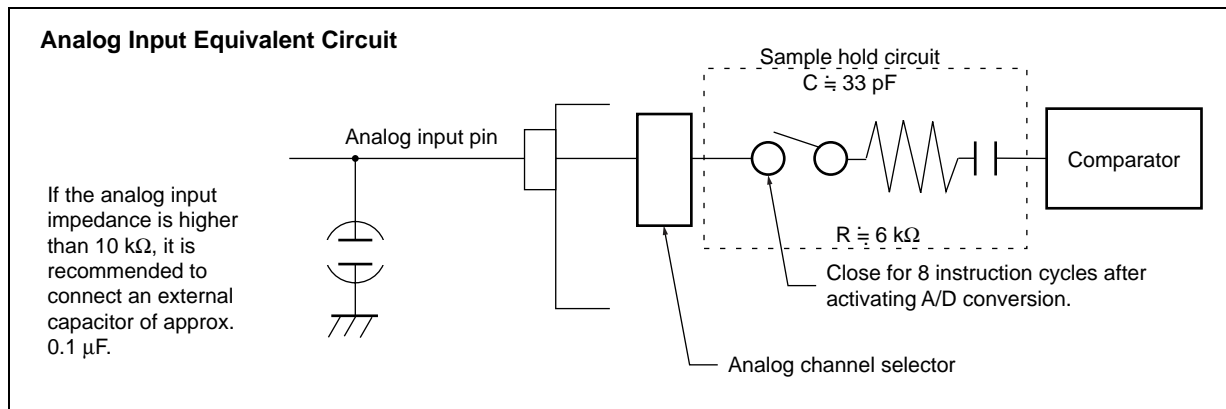
## (2) Precautions

### • Input impedance of analog input pins

The A/D converter contains a sample hold circuit as illustrated below to fetch analog input voltage into the sample hold capacitor for eight instruction cycles after activating A/D conversion.

For this reason, if the output impedance of the external circuit for the analog input is high, analog input voltage might not stabilize within the analog input sampling period. Therefore, it is recommended to keep the output impedance of the external circuit low (below 10 kΩ).

Note that if the impedance cannot be kept low, it is recommended to connect an external capacitor of about 0.1 μF for the analog input pin.

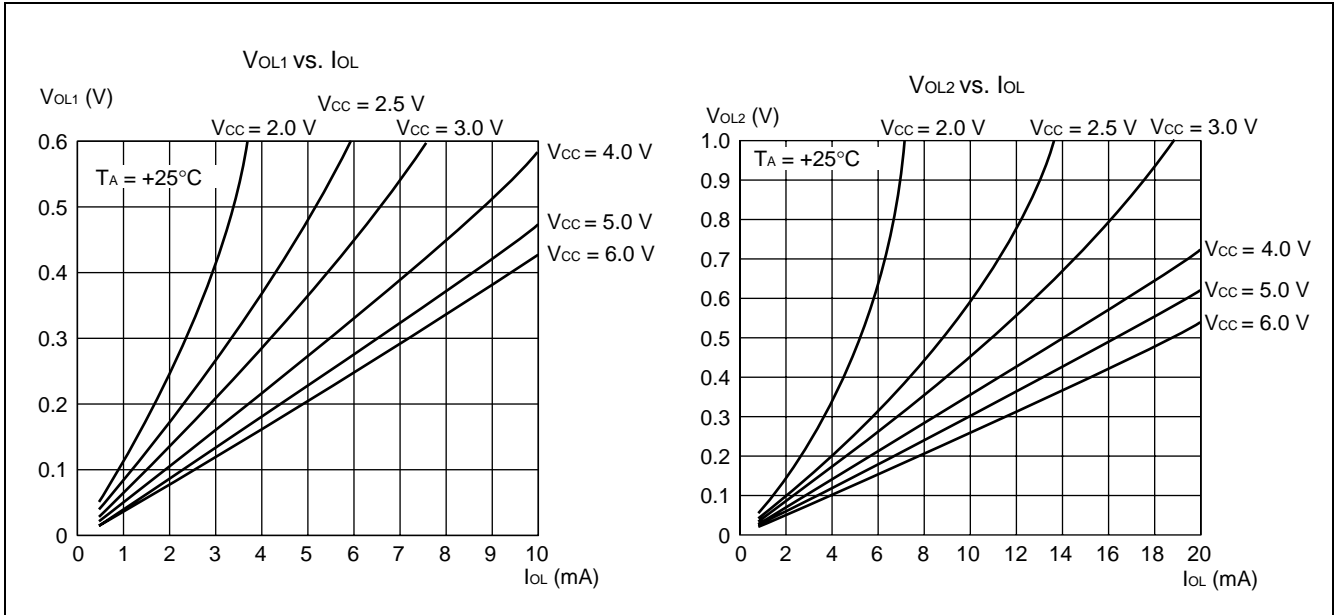


### • Error

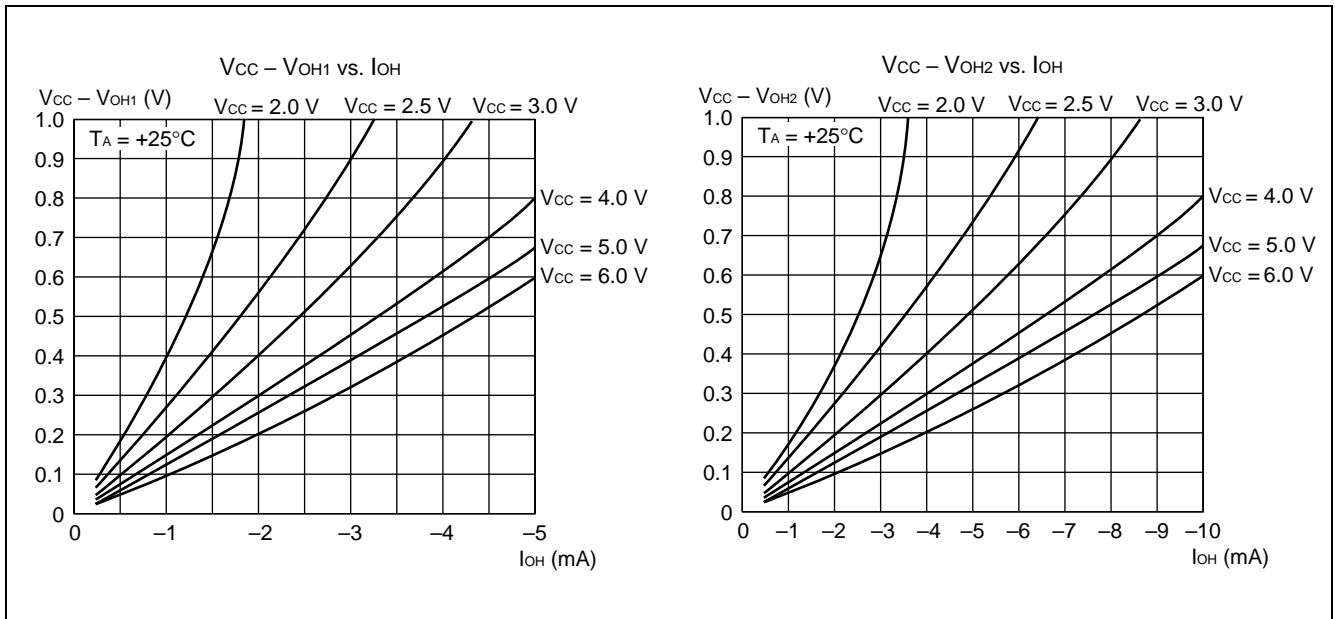
The smaller the  $|AVR - AV_{SS}|$ , the greater the error would become relatively.

## ■ EXAMPLE CHARACTERISTICS

### 1. "L" Level Output Voltage

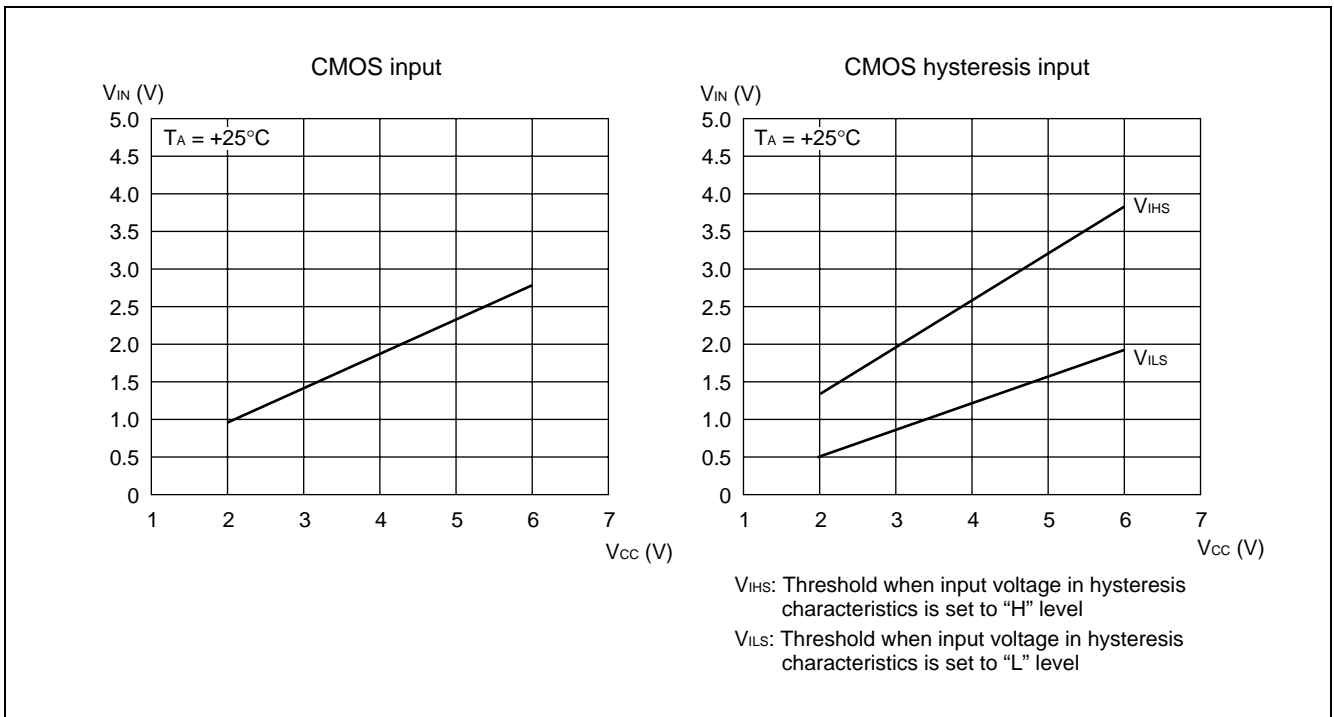


### 2. "H" Level Output Voltage

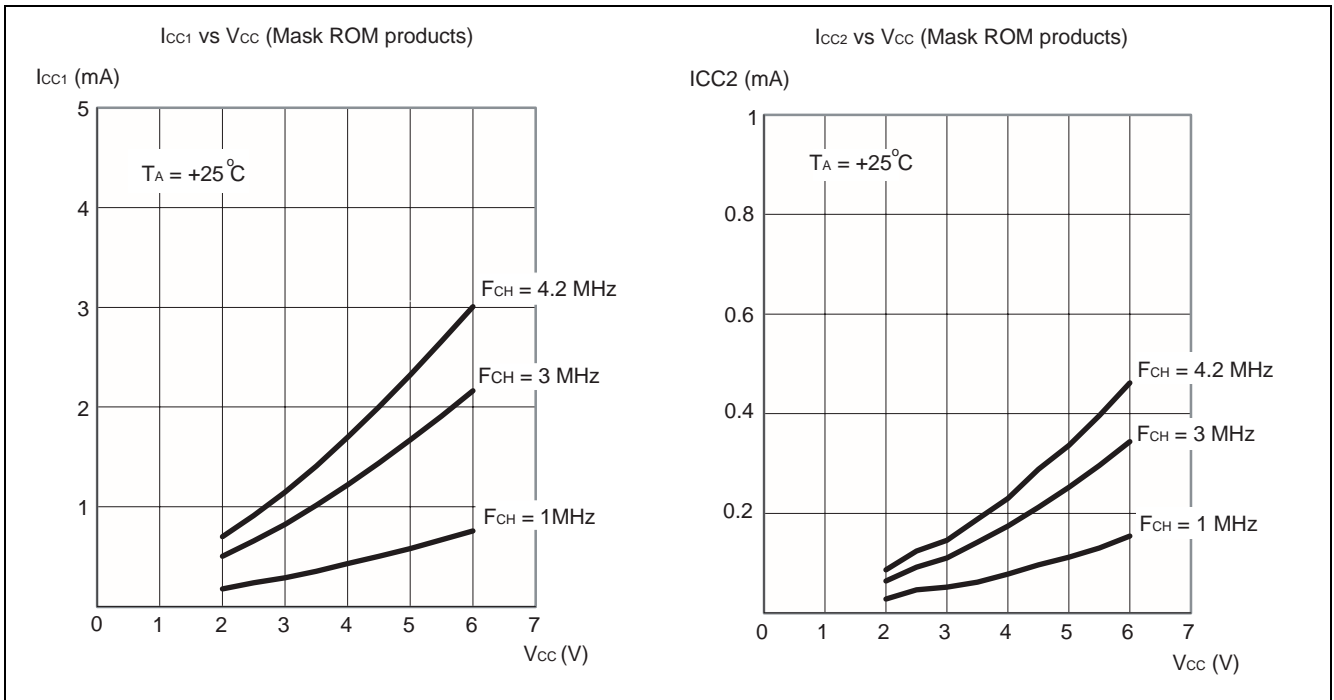


# MB89980 Series

## 3. "H" Level Input Voltage/"L" level Input Voltage



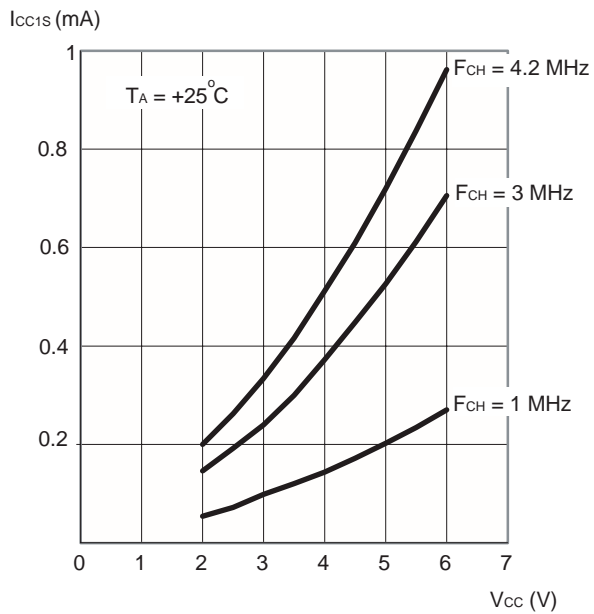
## 4. Power Supply Current (External Clock)



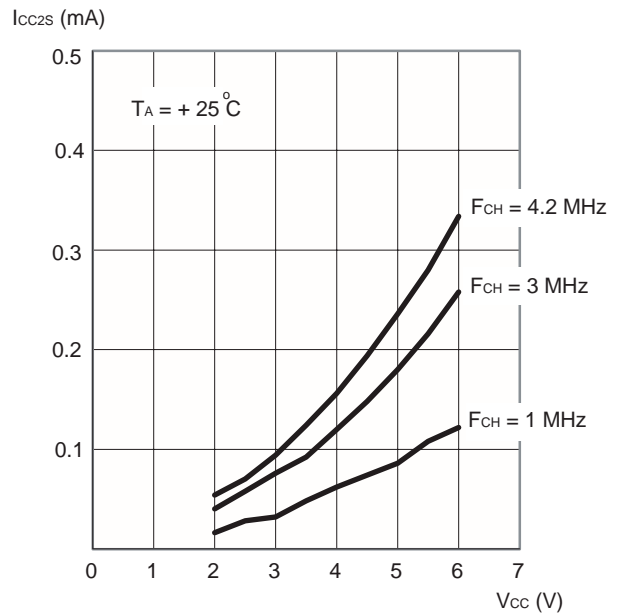
(Continued)

(Continued)

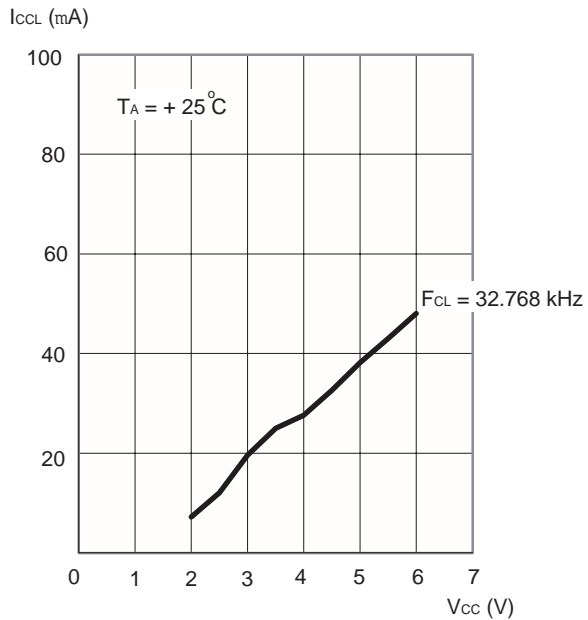
I<sub>CC1S</sub> vs V<sub>CC</sub> (Mask ROM products)



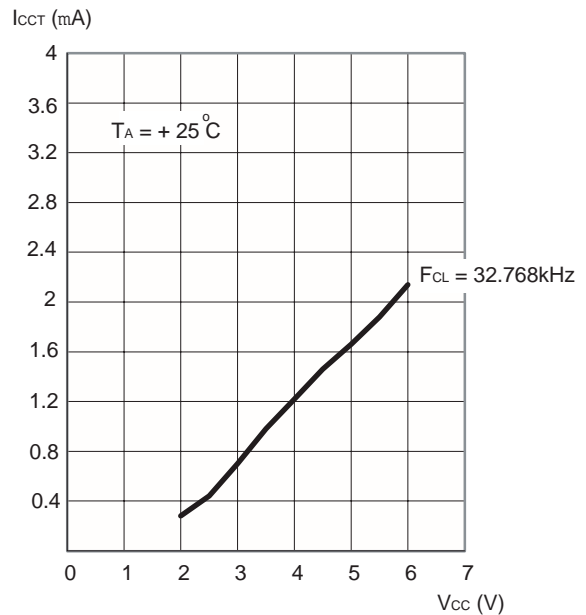
I<sub>CC2S</sub> vs V<sub>CC</sub> (Mask ROM products)



I<sub>CLL</sub> vs V<sub>CC</sub> (Mask ROM products)



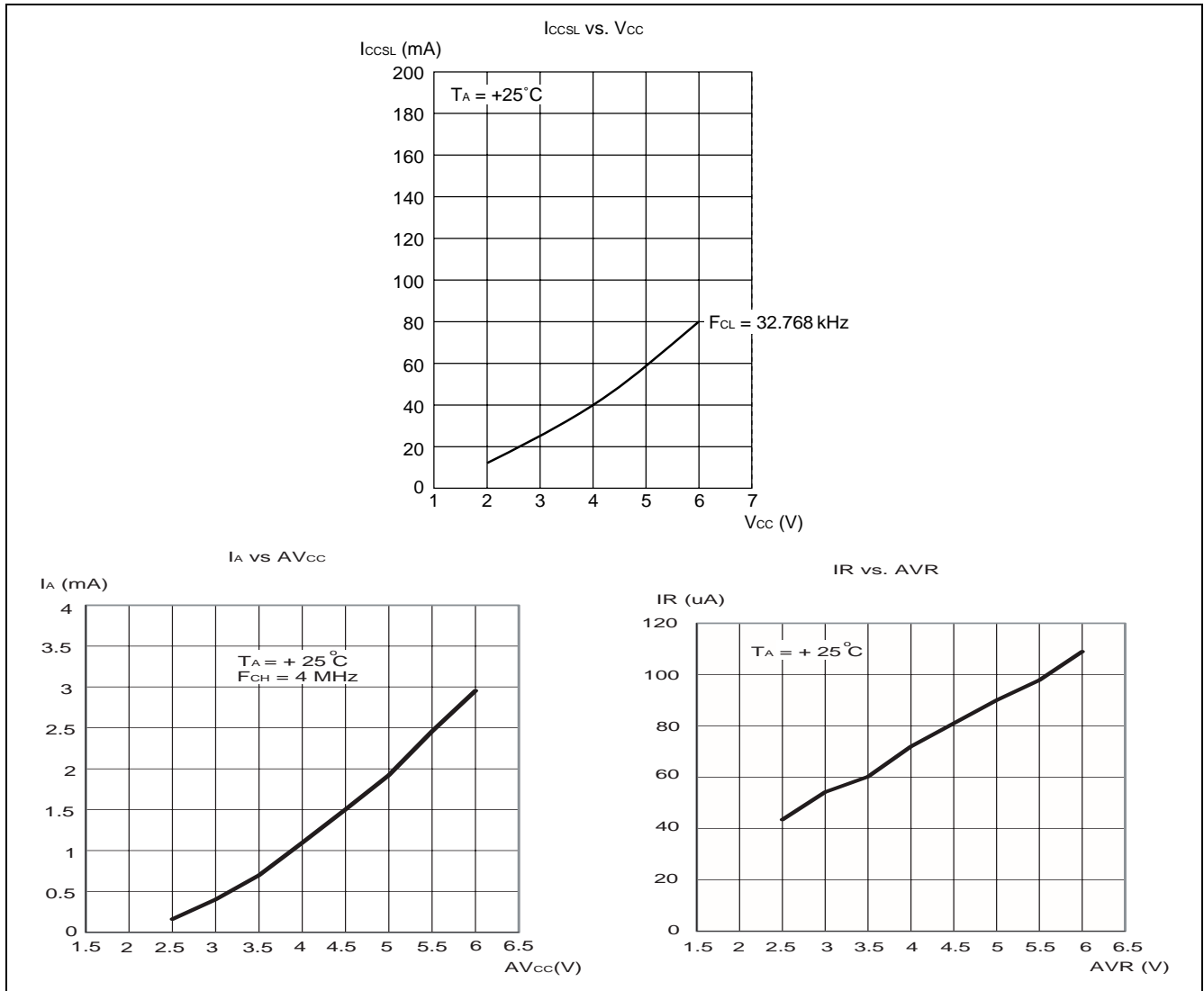
I<sub>CC1T</sub> vs V<sub>CC</sub>



(Continued)

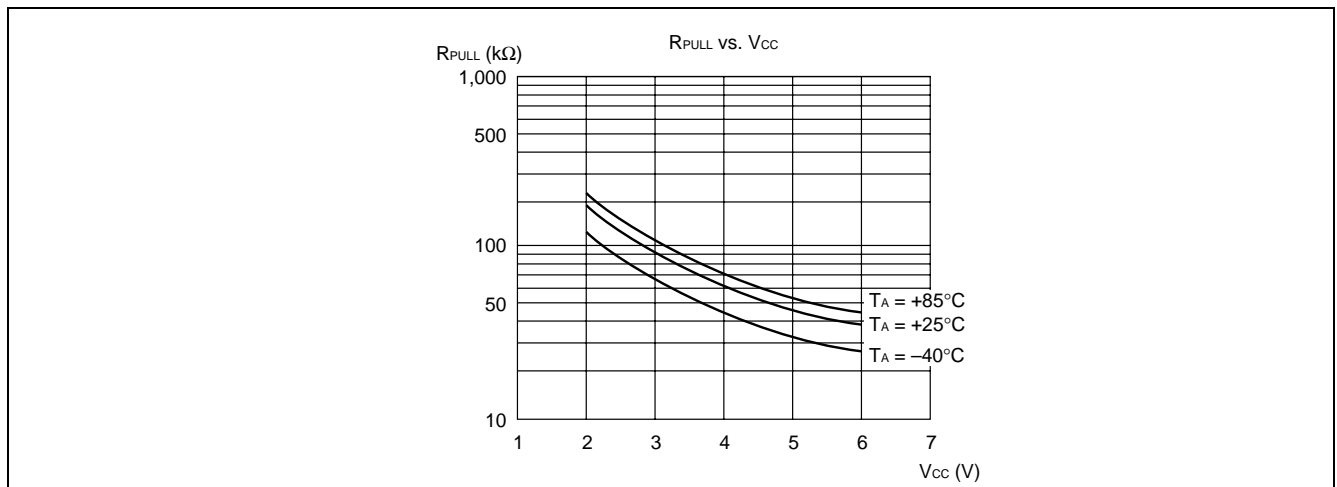
# MB89980 Series

(Continued)



(Continued)

## 5. Pull-up Resistance





## ■ INSTRUCTIONS

Execution instructions can be divided into the following four groups:

- Transfer
- Arithmetic operation
- Branch
- Others

Table 1 lists symbols used for notation for instructions.

**Table 1 Instruction Symbols**

Symbol	Meaning
dir	Direct address (8 bits)
off	Offset (8 bits)
ext	Extended address (16 bits)
#vct	Vector table number (3 bits)
#d8	Immediate data (8 bits)
#d16	Immediate data (16 bits)
dir: b	Bit direct address (8:3 bits)
rel	Branch relative address (8 bits)
@	Register indirect (Example: @A, @IX, @EP)
A	Accumulator A (Whether its length is 8 or 16 bits is determined by the instruction in use.)
AH	Upper 8 bits of accumulator A (8 bits)
AL	Lower 8 bits of accumulator A (8 bits)
T	Temporary accumulator T (Whether its length is 8 or 16 bits is determined by the instruction in use.)
TH	Upper 8 bits of temporary accumulator T (8 bits)
TL	Lower 8 bits of temporary accumulator T (8 bits)
IX	Index register IX (16 bits)

*(Continued)*

# MB89980 Series

(Continued)

Symbol	Meaning
EP	Extra pointer EP (16 bits)
PC	Program counter PC (16 bits)
SP	Stack pointer SP (16 bits)
PS	Program status PS (16 bits)
dr	Accumulator A or index register IX (16 bits)
CCR	Condition code register CCR (8 bits)
RP	Register bank pointer RP (5 bits)
Ri	General-purpose register Ri (8 bits, i = 0 to 7)
×	Indicates that the very × is the immediate data. (Whether its length is 8 or 16 bits is determined by the instruction in use.)
(×)	Indicates that the contents of × is the target of accessing. (Whether its length is 8 or 16 bits is determined by the instruction in use.)
((×))	The address indicated by the contents of × is the target of accessing. (Whether its length is 8 or 16 bits is determined by the instruction in use.)

Columns indicate the following:

Mnemonic: Assembler notation of an instruction

~: Number of instructions

#: Number of bytes

Operation: Operation of an instruction

TL, TH, AH: A content change when each of the TL, TH, and AH instructions is executed. Symbols in the column indicate the following:

- “–” indicates no change.
- dH is the 8 upper bits of operation description data.
- AL and AH must become the contents of AL and AH immediately before the instruction is executed.
- 00 becomes 00.

N, Z, V, C: An instruction of which the corresponding flag will change. If + is written in this column, the relevant instruction will change its corresponding flag.

OP code: Code of an instruction. If an instruction is more than one code, it is written according to the following rule:

Example: 48 to 4F ← This indicates 48, 49, ... 4F.

**Table 2 Transfer Instructions (48 instructions)**

Mnemonic	~	#	Operation	TL	TH	AH	NZVC	OP code
MOV dir,A	3	2	(dir) ← (A)	-	-	-	----	45
MOV @IX +off,A	4	2	( (IX) +off ) ← (A)	-	-	-	----	46
MOV ext,A	4	3	(ext) ← (A)	-	-	-	----	61
MOV @EP,A	3	1	( (EP) ) ← (A)	-	-	-	----	47
MOV Ri,A	3	1	(Ri) ← (A)	-	-	-	----	48 to 4F
MOV A,#d8	2	2	(A) ← d8	AL	-	-	++--	04
MOV A,dir	3	2	(A) ← (dir)	AL	-	-	++--	05
MOV A,@IX +off	4	2	(A) ← ( (IX) +off)	AL	-	-	++--	06
MOV A,ext	4	3	(A) ← (ext)	AL	-	-	++--	60
MOV A,@A	3	1	(A) ← ( (A) )	AL	-	-	++--	92
MOV A,@EP	3	1	(A) ← ( (EP) )	AL	-	-	++--	07
MOV A,Ri	3	1	(A) ← (Ri)	AL	-	-	++--	08 to 0F
MOV dir,#d8	4	3	(dir) ← d8	-	-	-	----	85
MOV @IX +off,#d8	5	3	( (IX) +off ) ← d8	-	-	-	----	86
MOV @EP,#d8	4	2	( (EP) ) ← d8	-	-	-	----	87
MOV Ri,#d8	4	2	(Ri) ← d8	-	-	-	----	88 to 8F
MOVW dir,A	4	2	(dir) ← (AH),(dir + 1) ← (AL)	-	-	-	----	D5
MOVW @IX +off,A	5	2	( (IX) +off ) ← (AH), ( (IX) +off + 1) ← (AL)	-	-	-	----	D6
MOVW ext,A	5	3	(ext) ← (AH), (ext + 1) ← (AL)	-	-	-	----	D4
MOVW @EP,A	4	1	( (EP) ) ← (AH),( (EP) + 1) ← (AL)	-	-	-	----	D7
MOVW EP,A	2	1	(EP) ← (A)	-	-	-	----	E3
MOVW A,#d16	3	3	(A) ← d16	AL	AH	dH	++--	E4
MOVW A,dir	4	2	(AH) ← (dir), (AL) ← (dir + 1)	AL	AH	dH	++--	C5
MOVW A,@IX +off	5	2	(AH) ← ( (IX) +off), (AL) ← ( (IX) +off + 1)	AL	AH	dH	++--	C6
MOVW A,ext	5	3	(AH) ← (ext), (AL) ← (ext + 1)	AL	AH	dH	++--	C4
MOVW A,@A	4	1	(AH) ← ( (A) ), (AL) ← ( (A) ) + 1	AL	AH	dH	++--	93
MOVW A,@EP	4	1	(AH) ← ( (EP) ), (AL) ← ( (EP) + 1)	AL	AH	dH	++--	C7
MOVW A,EP	2	1	(A) ← (EP)	-	-	dH	----	F3
MOVW EP,#d16	3	3	(EP) ← d16	-	-	-	----	E7
MOVW IX,A	2	1	(IX) ← (A)	-	-	-	----	E2
MOVW A,IX	2	1	(A) ← (IX)	-	-	dH	----	F2
MOVW SP,A	2	1	(SP) ← (A)	-	-	-	----	E1
MOVW A,SP	2	1	(A) ← (SP)	-	-	dH	----	F1
MOV @A,T	3	1	( (A) ) ← (T)	-	-	-	----	82
MOVW @A,T	4	1	( (A) ) ← (TH),( (A) + 1) ← (TL)	-	-	-	----	83
MOVW IX,#d16	3	3	(IX) ← d16	-	-	-	----	E6
MOVW A,PS	2	1	(A) ← (PS)	-	-	dH	----	70
MOVW PS,A	2	1	(PS) ← (A)	-	-	-	++++	71
MOVW SP,#d16	3	3	(SP) ← d16	-	-	-	----	E5
SWAP	2	1	(AH) ↔ (AL)	-	-	AL	----	10
SETB dir: b	4	2	(dir): b ← 1	-	-	-	----	A8 to AF
CLRB dir: b	4	2	(dir): b ← 0	-	-	-	----	A0 to A7
XCH A,T	2	1	(AL) ↔ (TL)	AL	-	-	----	42
XCHW A,T	3	1	(A) ↔ (T)	AL	AH	dH	----	43
XCHW A,EP	3	1	(A) ↔ (EP)	-	-	dH	----	F7
XCHW A,IX	3	1	(A) ↔ (IX)	-	-	dH	----	F6
XCHW A,SP	3	1	(A) ↔ (SP)	-	-	dH	----	F5
MOVW A,PC	2	1	(A) ← (PC)	-	-	dH	----	F0

Notes: • During byte transfer to A, T ← A is restricted to low bytes.  
 • Operands in more than one operand instruction must be stored in the order in which their mnemonics are written. (Reverse arrangement of F<sup>2</sup>MC-8 family)

# MB89980 Series

**Table 3 Arithmetic Operation Instructions (62 instructions)**

Mnemonic	~	#	Operation	TL	TH	AH	NZVC	OP code
ADDC A,Ri	3	1	$(A) \leftarrow (A) + (Ri) + C$	-	-	-	++++	28 to 2F
ADDC A,#d8	2	2	$(A) \leftarrow (A) + d8 + C$	-	-	-	++++	24
ADDC A,dir	3	2	$(A) \leftarrow (A) + (dir) + C$	-	-	-	++++	25
ADDC A,@IX +off	4	2	$(A) \leftarrow (A) + ((IX) + off) + C$	-	-	-	++++	26
ADDC A,@EP	3	1	$(A) \leftarrow (A) + ((EP)) + C$	-	-	-	++++	27
ADDCW A	3	1	$(A) \leftarrow (A) + (T) + C$	-	-	dH	++++	23
ADDC A	2	1	$(AL) \leftarrow (AL) + (TL) + C$	-	-	-	++++	22
SUBC A,Ri	3	1	$(A) \leftarrow (A) - (Ri) - C$	-	-	-	++++	38 to 3F
SUBC A,#d8	2	2	$(A) \leftarrow (A) - d8 - C$	-	-	-	++++	34
SUBC A,dir	3	2	$(A) \leftarrow (A) - (dir) - C$	-	-	-	++++	35
SUBC A,@IX +off	4	2	$(A) \leftarrow (A) - ((IX) + off) - C$	-	-	-	++++	36
SUBC A,@EP	3	1	$(A) \leftarrow (A) - ((EP)) - C$	-	-	-	++++	37
SUBCW A	3	1	$(A) \leftarrow (T) - (A) - C$	-	-	dH	++++	33
SUBC A	2	1	$(AL) \leftarrow (TL) - (AL) - C$	-	-	-	++++	32
INC Ri	4	1	$(Ri) \leftarrow (Ri) + 1$	-	-	-	+++ -	C8 to CF
INCW EP	3	1	$(EP) \leftarrow (EP) + 1$	-	-	-	----	C3
INCW IX	3	1	$(IX) \leftarrow (IX) + 1$	-	-	-	----	C2
INCW A	3	1	$(A) \leftarrow (A) + 1$	-	-	dH	++ - -	C0
DEC Ri	4	1	$(Ri) \leftarrow (Ri) - 1$	-	-	-	+++ -	D8 to DF
DECW EP	3	1	$(EP) \leftarrow (EP) - 1$	-	-	-	----	D3
DECW IX	3	1	$(IX) \leftarrow (IX) - 1$	-	-	-	----	D2
DECW A	3	1	$(A) \leftarrow (A) - 1$	-	-	dH	++ - -	D0
MULU A	19	1	$(A) \leftarrow (AL) \times (TL)$	-	-	dH	----	01
DIVU A	21	1	$(A) \leftarrow (T) / (AL), MOD \rightarrow (T)$	dL	00	00	----	11
ANDW A	3	1	$(A) \leftarrow (A) \wedge (T)$	-	-	dH	++ R -	63
ORW A	3	1	$(A) \leftarrow (A) \vee (T)$	-	-	dH	++ R -	73
XORW A	3	1	$(A) \leftarrow (A) \nabla (T)$	-	-	dH	++ R -	53
CMP A	2	1	$(TL) - (AL)$	-	-	-	++++	12
CMPW A	3	1	$(T) - (A)$	-	-	-	++++	13
RORC A	2	1	$\boxed{\rightarrow C \rightarrow A}$	-	-	-	++ - +	03
ROLC A	2	1	$\boxed{C \leftarrow A \leftarrow}$	-	-	-	++ - +	02
CMP A,#d8	2	2	$(A) - d8$	-	-	-	++++	14
CMP A,dir	3	2	$(A) - (dir)$	-	-	-	++++	15
CMP A,@EP	3	1	$(A) - ((EP))$	-	-	-	++++	17
CMP A,@IX +off	4	2	$(A) - ((IX) + off)$	-	-	-	++++	16
CMP A,Ri	3	1	$(A) - (Ri)$	-	-	-	++++	18 to 1F
DAA	2	1	Decimal adjust for addition	-	-	-	++++	84
DAS	2	1	Decimal adjust for subtraction	-	-	-	++++	94
XOR A	2	1	$(A) \leftarrow (AL) \nabla (TL)$	-	-	-	++ R -	52
XOR A,#d8	2	2	$(A) \leftarrow (AL) \nabla d8$	-	-	-	++ R -	54
XOR A,dir	3	2	$(A) \leftarrow (AL) \nabla (dir)$	-	-	-	++ R -	55
XOR A,@EP	3	1	$(A) \leftarrow (AL) \nabla ((EP))$	-	-	-	++ R -	57
XOR A,@IX +off	4	2	$(A) \leftarrow (AL) \nabla ((IX) + off)$	-	-	-	++ R -	56
XOR A,Ri	3	1	$(A) \leftarrow (AL) \nabla (Ri)$	-	-	-	++ R -	58 to 5F
AND A	2	1	$(A) \leftarrow (AL) \wedge (TL)$	-	-	-	++ R -	62
AND A,#d8	2	2	$(A) \leftarrow (AL) \wedge d8$	-	-	-	++ R -	64
AND A,dir	3	2	$(A) \leftarrow (AL) \wedge (dir)$	-	-	-	++ R -	65

(Continued)

(Continued)

Mnemonic	~	#	Operation	TL	TH	AH	NZVC	OP code
AND A,@EP	3	1	$(A) \leftarrow (AL) \wedge ((EP))$	-	-	-	++R-	67
AND A,@IX +off	4	2	$(A) \leftarrow (AL) \wedge ((IX) + \text{off})$	-	-	-	++R-	66
AND A,Ri	3	1	$(A) \leftarrow (AL) \wedge (Ri)$	-	-	-	++R-	68 to 6F
OR A	2	1	$(A) \leftarrow (AL) \vee (TL)$	-	-	-	++R-	72
OR A,#d8	2	2	$(A) \leftarrow (AL) \vee d8$	-	-	-	++R-	74
OR A,dir	3	2	$(A) \leftarrow (AL) \vee (\text{dir})$	-	-	-	++R-	75
OR A,@EP	3	1	$(A) \leftarrow (AL) \vee ((EP))$	-	-	-	++R-	77
OR A,@IX +off	4	2	$(A) \leftarrow (AL) \vee ((IX) + \text{off})$	-	-	-	++R-	76
OR A,Ri	3	1	$(A) \leftarrow (AL) \vee (Ri)$	-	-	-	++R-	78 to 7F
CMP dir,#d8	5	3	$(\text{dir}) - d8$	-	-	-	++++	95
CMP @EP,#d8	4	2	$((EP)) - d8$	-	-	-	++++	97
CMP @IX +off,#d8	5	3	$((IX) + \text{off}) - d8$	-	-	-	++++	96
CMP Ri,#d8	4	2	$(Ri) - d8$	-	-	-	++++	98 to 9F
INCW SP	3	1	$(SP) \leftarrow (SP) + 1$	-	-	-	----	C1
DECW SP	3	1	$(SP) \leftarrow (SP) - 1$	-	-	-	----	D1

**Table 4 Branch Instructions (17 instructions)**

Mnemonic	~	#	Operation	TL	TH	AH	NZVC	OP code
BZ/BEQ rel	3	2	If $Z = 1$ then $PC \leftarrow PC + \text{rel}$	-	-	-	----	FD
BNZ/BNE rel	3	2	If $Z = 0$ then $PC \leftarrow PC + \text{rel}$	-	-	-	----	FC
BC/BLO rel	3	2	If $C = 1$ then $PC \leftarrow PC + \text{rel}$	-	-	-	----	F9
BNC/BHS rel	3	2	If $C = 0$ then $PC \leftarrow PC + \text{rel}$	-	-	-	----	F8
BN rel	3	2	If $N = 1$ then $PC \leftarrow PC + \text{rel}$	-	-	-	----	FB
BP rel	3	2	If $N = 0$ then $PC \leftarrow PC + \text{rel}$	-	-	-	----	FA
BLT rel	3	2	If $V \vee N = 1$ then $PC \leftarrow PC + \text{rel}$	-	-	-	----	FF
BGE rel	3	2	If $V \vee N = 0$ then $PC \leftarrow PC + \text{rel}$	-	-	-	----	FE
BBC dir: b,rel	5	3	If $(\text{dir}: b) = 0$ then $PC \leftarrow PC + \text{rel}$	-	-	-	-+---	B0 to B7
BBS dir: b,rel	5	3	If $(\text{dir}: b) = 1$ then $PC \leftarrow PC + \text{rel}$	-	-	-	-+---	B8 to BF
JMP @A	2	1	$(PC) \leftarrow (A)$	-	-	-	----	E0
JMP ext	3	3	$(PC) \leftarrow \text{ext}$	-	-	-	----	21
CALLV #vct	6	1	Vector call	-	-	-	----	E8 to EF
CALL ext	6	3	Subroutine call	-	-	-	----	31
XCHW A,PC	3	1	$(PC) \leftarrow (A), (A) \leftarrow (PC) + 1$	-	-	dH	----	F4
RET	4	1	Return from subroutine	-	-	-	----	20
RETI	6	1	Return from interrupt	-	-	-	Restore	30

**Table 5 Other Instructions (9 instructions)**

Mnemonic	~	#	Operation	TL	TH	AH	NZVC	OP code
PUSHW A	4	1		-	-	-	----	40
POPW A	4	1		-	-	dH	----	50
PUSHW IX	4	1		-	-	-	----	41
POPW IX	4	1		-	-	-	----	51
NOP	1	1		-	-	-	----	00
CLRC	1	1		-	-	-	---R	81
SETC	1	1		-	-	-	---S	91
CLRl	1	1		-	-	-	----	80
SETl	1	1		-	-	-	----	90

# MB89980 Series

## ■ INSTRUCTION MAP

L	H	0	1	2	3	4	5	6	7	8	9	A	B	C	D	E	F
0	NOP	SWAP	RET	RETI	PUSHW	A	POPW	MOV	MOVW	CLRI	SETI	CLRB	BBC	INCW	DECW	JMP	MOVW
1	MULU	DIVU	JMP	CALL	PUSHW	IX	POPW	MOV	MOVW	CLRC	SETC	CLRB	BBC	INCW	DECW	MOVW	MOVW
2	ROLC	CMP	ADDC	SUBC	XCH	A,T	XOR	AND	OR	MOV	MOV	CLRB	BBC	INCW	DECW	MOVW	MOVW
3	RORC	CMPW	ADDCW	SUBCW	XCHW	A,T	XORW	ANDW	ORW	MOVW	MOVW	CLRB	BBC	INCW	DECW	MOVW	MOVW
4	MOV	CMP	ADDC	SUBC	XOR	A,d8	XOR	AND	OR	DAA	DAS	CLRB	BBC	MOVW	MOVW	MOVW	XCHW
5	MOV	CMP	ADDC	SUBC	MOV	dir,A	XOR	AND	OR	MOV	CMP	CLRB	BBC	MOVW	MOVW	MOVW	XCHW
6	MOV	CMP	ADDC	SUBC	MOV	@IX	XOR	AND	OR	MOV	CMP	CLRB	BBC	MOVW	MOVW	MOVW	XCHW
7	MOV	CMP	ADDC	SUBC	MOV	@EP,A	XOR	AND	OR	MOV	CMP	CLRB	BBC	MOVW	MOVW	MOVW	XCHW
8	MOV	CMP	ADDC	SUBC	MOV	R0,A	XOR	AND	OR	MOV	CMP	SETB	BBS	INC	DEC	CALLV	BNC
9	MOV	CMP	ADDC	SUBC	MOV	R1,A	XOR	AND	OR	MOV	CMP	SETB	BBS	INC	DEC	CALLV	BC
A	MOV	CMP	ADDC	SUBC	MOV	R2,A	XOR	AND	OR	MOV	CMP	SETB	BBS	INC	DEC	CALLV	BP
B	MOV	CMP	ADDC	SUBC	MOV	R3,A	XOR	AND	OR	MOV	CMP	SETB	BBS	INC	DEC	CALLV	BN
C	MOV	CMP	ADDC	SUBC	MOV	R4,A	XOR	AND	OR	MOV	CMP	SETB	BBS	INC	DEC	CALLV	BNZ
D	MOV	CMP	ADDC	SUBC	MOV	R5,A	XOR	AND	OR	MOV	CMP	SETB	BBS	INC	DEC	CALLV	BZ
E	MOV	CMP	ADDC	SUBC	MOV	R6,A	XOR	AND	OR	MOV	CMP	SETB	BBS	INC	DEC	CALLV	BGE
F	MOV	CMP	ADDC	SUBC	MOV	R7,A	XOR	AND	OR	MOV	CMP	SETB	BBS	INC	DEC	CALLV	BLT

## ■ MASK OPTIONS

No.	Part number	MB89983	MB89P985	MB89PV980
	Specifying procedure	Specify when ordering masking	Setting with software	Setting with software
1	Pull-up resistors (SEG) P00 to P07, P10 to P17, P20 to P27, P40 to P47, P50 to P53, P60 to P65	Selectable per pin (The pull-up resistors for P40 to P47 and P60 to P65 are only selectable when these pins are not set as segment/common outputs. When the A/D is used, P50 to P53 are must not selected.)	Selectable per pin by pull-up control registers. (Pull-up resistors are not available for P20 to P27, P40 to P47 and P60 to P65. Furthermore, P50 to P53 must be set to without a pull-up resistor when an A/D converter is used.)	Selectable per pin by pull-up control registers. (Pull-up resistors are not available for P20 to P27, P40 to P47 and P60 to P65. Furthermore, P50 to P53 must be set to without a pull-up resistor when an A/D converter is used.)
2	Power-on reset (POR) With power-on reset Without power-on reset	Selectable	Fixed with power-on reset	Fixed with power-on reset
3	Selection of oscillation stabilization time (OSC) • The initial value of the oscillation stabilization time for the main clock can be set by selecting the values of the WT1 and WT0 bits on the right.	Selectable OSC 0 : $2^2/F_{CH}$ 1 : $2^{12}/F_{CH}$ 2 : $2^{16}/F_{CH}$ 3 : $2^{18}/F_{CH}$	Fixed to oscillation stabilization time of $2^{18}/F_{CH}$ (Approx. 62.4 ms).	Fixed to oscillation stabilization time of $2^{18}/F_{CH}$ (Approx. 62.4 ms).
4	Main clock oscillation type (XSL) Crystal or ceramic resonator CR	Selectable	Crystal or ceramic resonator only	Crystal or ceramic resonator only
5	Reset pin output (RST) With reset output Without reset output	Selectable	Fixed with reset output	Fixed with reset output
6	Clock mode selection (CLK) Dual-clock mode Single-clock mode	Selectable	Selection by version number 101 : Single clock 201 : Dual clock	Selection by version number 101 : Single clock 201 : Dual clock

# MB89980 Series

- **Segment Options**

No.	Part number	MB89983
	Specifying procedure	Specify when ordering masking
7	LCD output pin configuration choices	Specify by the option combinations listed below
	SEG = 3: P40 to P47 segment output P60 to P65 segment output P70, P71 common output	Specify as SEG = 3
	SEG = 2: P40 to P43 port output P44 to P47 segment output P60 to P65 segment output P70, P71 common output	Specify as SEG = 2
	SEG = 1: P40 to P47 port output P60 to P65 segment output P70, P71 common output	Specify as SEG = 1
	SEG = 0: P40 to P47 port output P60 to P65 port output P70, P71 port output	Specify as SEG = 0

## ■ VERSIONS

Version			Features
Mass production product	One-time PROM product	Piggyback product	Clock mode
MB89983	MB89P985-101	MB89PV980-101	Single clock
MB89983	MB89P985-201	MB89PV980-201	Dual clock



# MB89980 Series

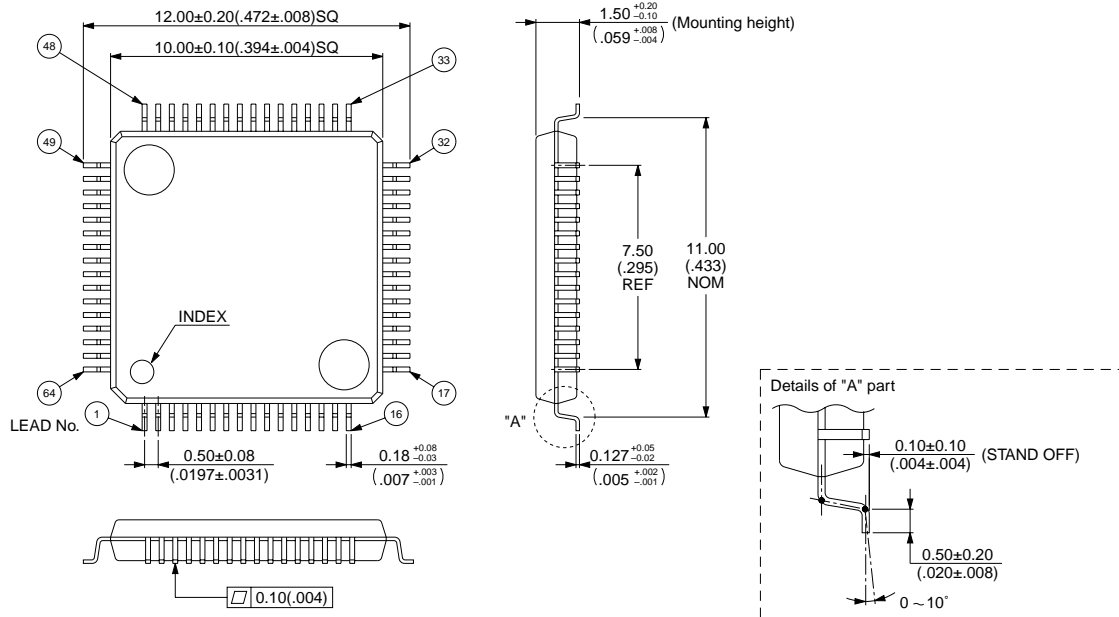
## ■ ORDERING INFORMATION

Part Number	Package	Remarks
MB89983-xxx-PFV	64-pin Plastic LQFP (FPT-64P-M03)	
MB89983-xxx-PFM	64-pin Plastic QFP (FPT-64P-M09)	
MB89P985PFV-101	64-pin Plastic LQFP (FPT-64P-M03)	Single Clock
MB89P985-PFM-101	64-pin Plastic QFP (FPT-64P-M09)	
MB89P985PFV-201	64-pin Plastic LQFP (FPT-64P-M03)	Dual Clock
MB89P985-PFM-201	64-pin Plastic QFP (FPT-64P-M09)	
MB89PV980-101	64-pin Ceramic MQFP (MQP-64C-P01)	Single Clock
MB89PV980-201	64-pin Ceramic MQFP (MQP-64C-P01)	Dual Clock

# MB89980 Series

## ■ PACKAGE DIMENSIONS

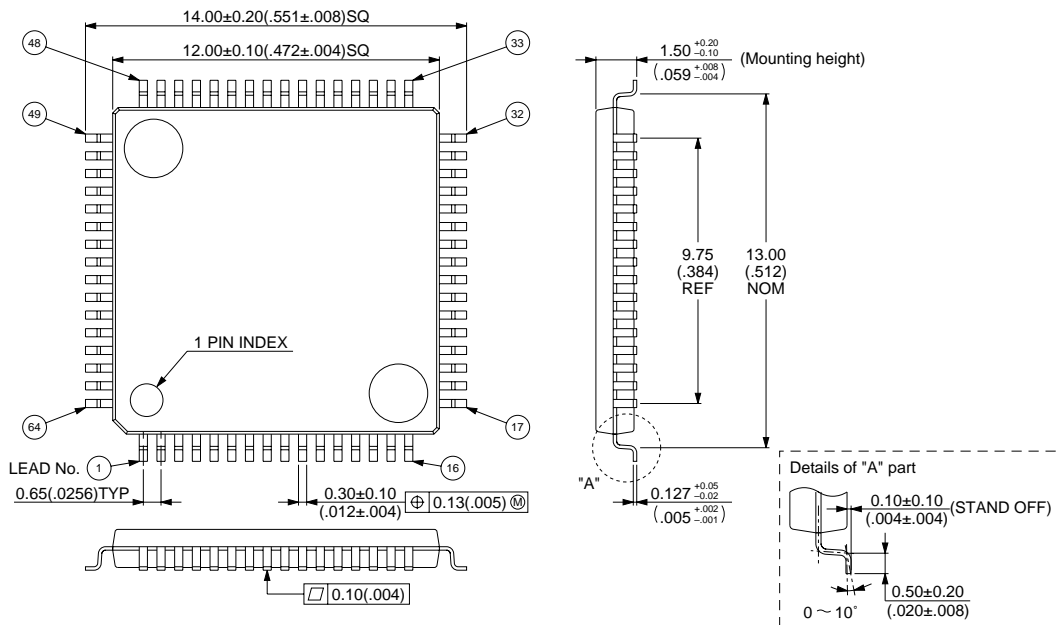
64-pin Plastic LQFP  
(FPT-64P-M03)



© 1995 FUJITSU LIMITED F64009S-2C-5

Dimension in mm (inches)

64-pin Plastic QFP  
(FPT-64P-M09)

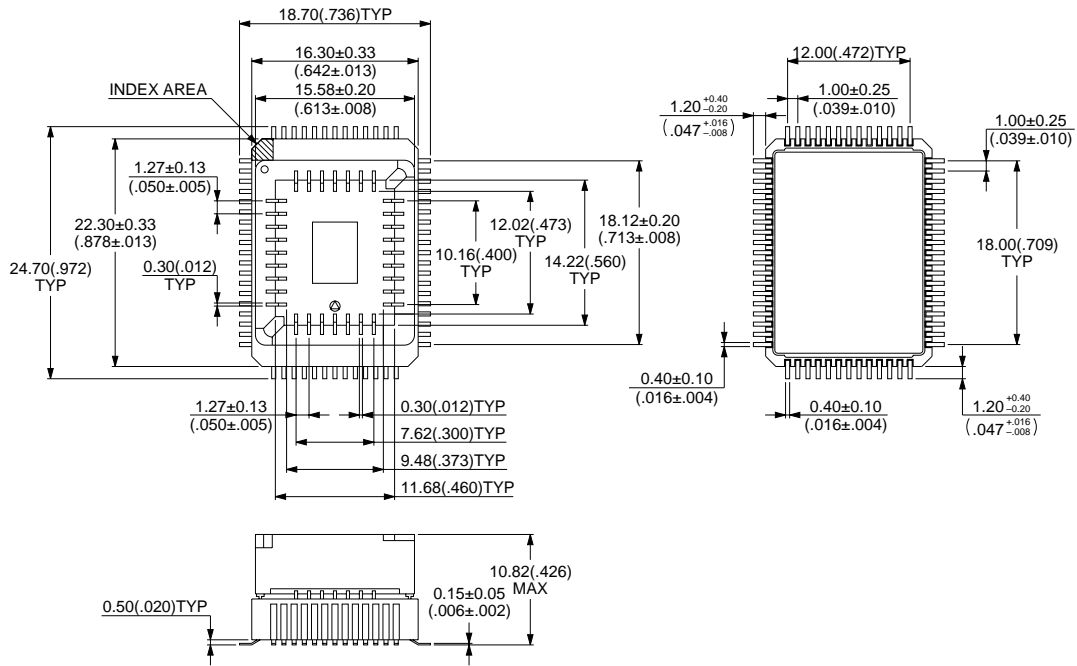


© 1994 FUJITSU LIMITED F64018S-1C-2

Dimension in mm (inches)

# MB89980 Series

64-pin Ceramic MQFP  
(MQP-64C-P01)



© 1994 FUJITSU LIMITED M64004SC-1-3

Dimension in mm (inches)

## FUJITSU LIMITED

*For further information please contact:*

### **Japan**

FUJITSU LIMITED  
Corporate Global Business Support Division  
Electronic Devices  
KAWASAKI PLANT, 4-1-1, Kamikodanaka  
Nakahara-ku, Kawasaki-shi  
Kanagawa 211-8588, Japan  
Tel: (044) 754-3763  
Fax: (044) 754-3329

<http://www.fujitsu.co.jp/>

### **North and South America**

FUJITSU MICROELECTRONICS, INC.  
Semiconductor Division  
3545 North First Street  
San Jose, CA 95134-1804, USA  
Tel: (408) 922-9000  
Fax: (408) 922-9179

Customer Response Center  
*Mon. - Fri.: 7 am - 5 pm (PST)*  
Tel: (800) 866-8608  
Fax: (408) 922-9179

<http://www.fujitsumicro.com/>

### **Europe**

FUJITSU MIKROELEKTRONIK GmbH  
Am Siebenstein 6-10  
D-63303 Dreieich-Buchsschlag  
Germany  
Tel: (06103) 690-0  
Fax: (06103) 690-122

<http://www.fujitsu-edc.com/>

### **Asia Pacific**

FUJITSU MICROELECTRONICS ASIA PTE LTD  
#05-08, 151 Lorong Chuan  
New Tech Park  
Singapore 556741  
Tel: (65) 281-0770  
Fax: (65) 281-0220

<http://www.fmap.com.sg/>

F9902

© FUJITSU LIMITED Printed in Japan

All Rights Reserved.

Circuit diagrams utilizing Fujitsu products are included as a means of illustrating typical semiconductor applications. Complete information sufficient for construction purposes is not necessarily given.

The information contained in this document has been carefully checked and is believed to be reliable. However, Fujitsu assumes no responsibility for inaccuracies.

The information contained in this document does not convey any license under the copyrights, patent rights or trademarks claimed and owned by Fujitsu.

Fujitsu reserves the right to change products or specifications without notice.

No part of this publication may be copied or reproduced in any form or by any means, or transferred to any third party without prior written consent of Fujitsu.

The information contained in this document are not intended for use with equipments which require extremely high reliability such as aerospace equipments, undersea repeaters, nuclear control systems or medical equipments for life support.