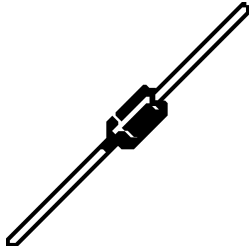
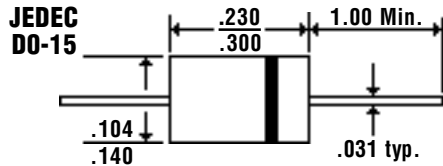


Description



Mechanical Dimensions

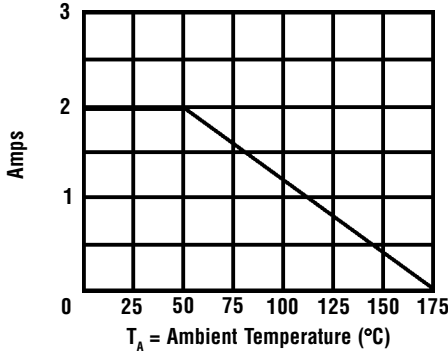


Features

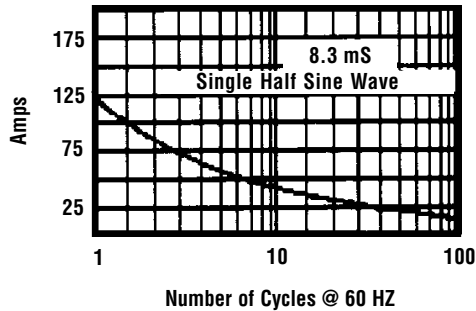
- HIGH SURGE CAPABILITY
- LOW FORWARD VOLTAGE DROP
- HIGH CURRENT CAPABILITY
- EXCEEDS ENVIRONMENTAL STANDARDS OF MIL-STD-19500

Electrical Characteristics @ 25°C.	SF21 ... 24 Series				Units
Maximum Ratings	SF21	SF22	SF23	SF24	
Peak Repetitive Reverse Voltage... V_{RRM}	50	100	150	200	Volts
RMS Reverse Voltage... $V_{R(rms)}$	35	70	105	140	Volts
DC Blocking Voltage... V_{DC}	50	100	150	200	Volts
Average Forward Rectified Current... $I_{F(av)}$ $T_A = 55^\circ C$	2.0				Amps
Non-Repetitive Peak Forward Surge Current... I_{FSM} @ Rated Current & Temp	50				Amps
Forward Voltage @ 2.0A... V_f	0.95				Volts
DC Reverse Current... I_R @ Rated DC Blocking Voltage	$T_A = 25^\circ C$		2.0		μAmps
	$T_A = 150^\circ C$		50		μAmps
Typical Junction Capacitance... C_j (Note 1)	70				pF
Typical Reverse Recovery Time... t_{RR} (Note 2)	35				nS
Operating & Storage Temperature Range... T_J, T_{STRG}	-65 to 150				°C

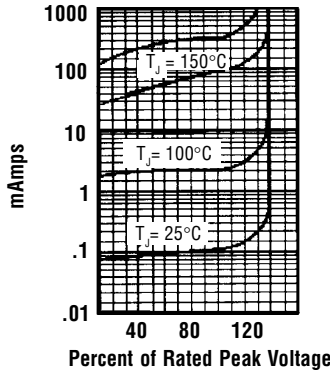
Forward Current Derating Curve



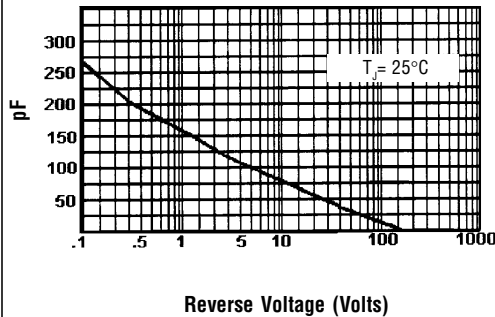
Non-Repetitive Peak Forward Surge Current



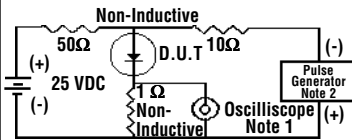
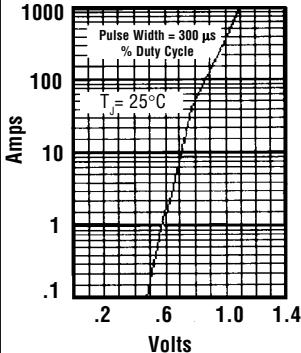
Typical Reverse Characteristics



Typical Junction Capacitance



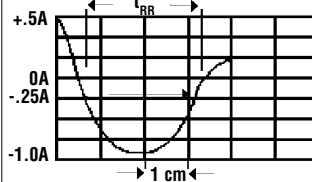
Typical Instantaneous Forward Characteristics



Notes:

1. Rise Time = 7 nS Max. Impedance = 1 megohm, 22 pF
2. Rise Time = 10 nS Max. Source Impedance = 50 Ohms

Reverse Recovery Characteristics



Ratings at 25 Deg. C ambient temperature unless otherwise specified.

Single Phase Half Wave, 60 HZ Resistive or Inductive Load.

For Capacitive Load, Derate Current by 20%.

- NOTES:**
1. Measured @ 1 MHz and applied reverse voltage of 4.0V.
 2. Conditions: I_F = 0.5A, I_R = 1.0A, I_{RR} = 0.25A.