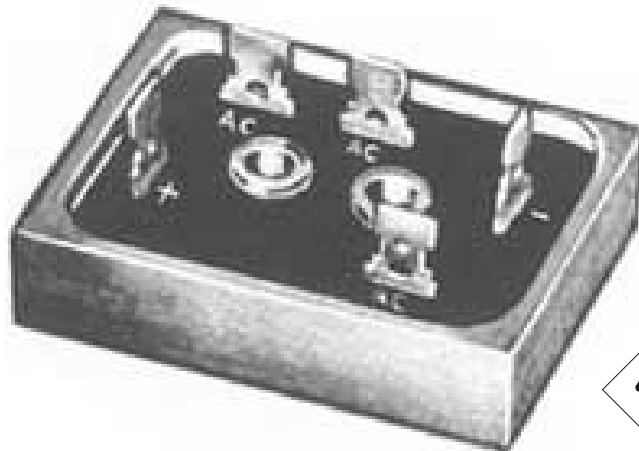




PWT

MINIBRIDGE[®]
 30 AMPERES
 THREE-PHASE FULL-WAVE BRIDGES
 HEAT SINK AND CHASSIS MOUNTING



RJ This mark indicates recognition under the component program of Underwriters Laboratories, Inc.

PWT SERIES

PRV/Leg	50V	100V	200V	400V	600V	800V	1000V	1200V	1400V
Type No.	PWT05	PWT10	PWT20	PWT40	PWT60	PWT80	PWT100	PWT120	PWT140

ELECTRICAL CHARACTERISTICS PER LEG
 (at T_A=25 °C Unless Otherwise Specified)

Max. Forward Voltage Drop V _F =1.2 V @ I _F =	12	Amp
Max. DC Reverse Current @ PRV and 25 °C, I _R	10	μA
Max. DC Reverse Current @ PRV and 100 °C, I _R	100	μA
Max. Peak Surge Current, I _{FSM} (8.3ms)	400	Amp
Storage Temperature Range, T _{STG}	-55 to +175	°C
Thermal Resistance (Total Bridge), R _{θj-c}	2.2typ.	°C/W

EDI reserves the right to change these specifications at any time without notice

Figure 1

CURRENT DERATING

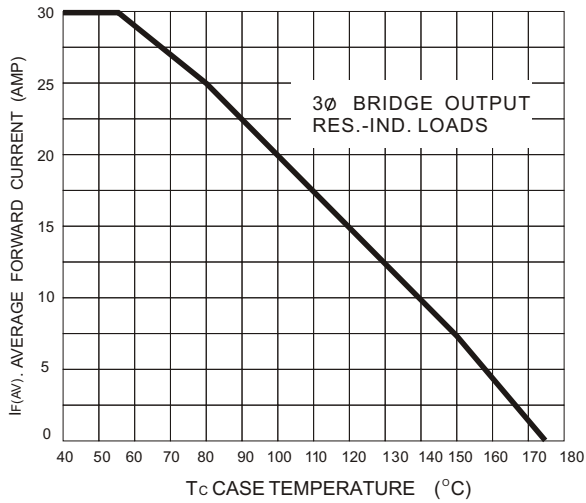


Figure 2

POWER DISSIPATION

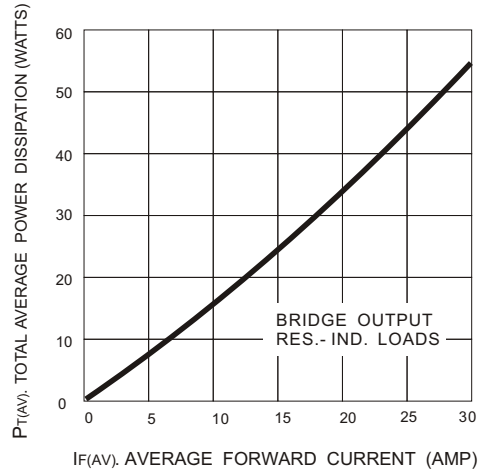


Figure 3

NON-REPETITIVE SURGE CURRENT

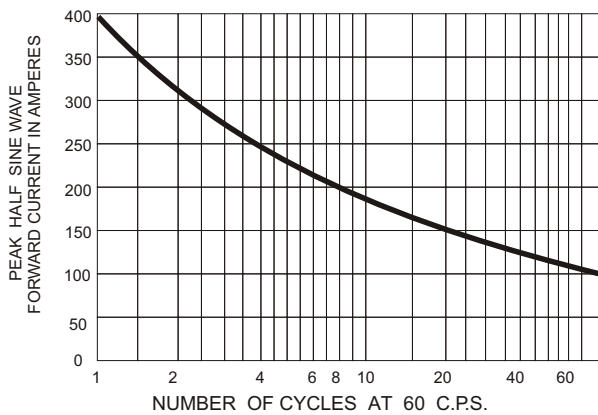
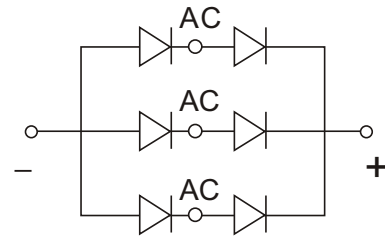


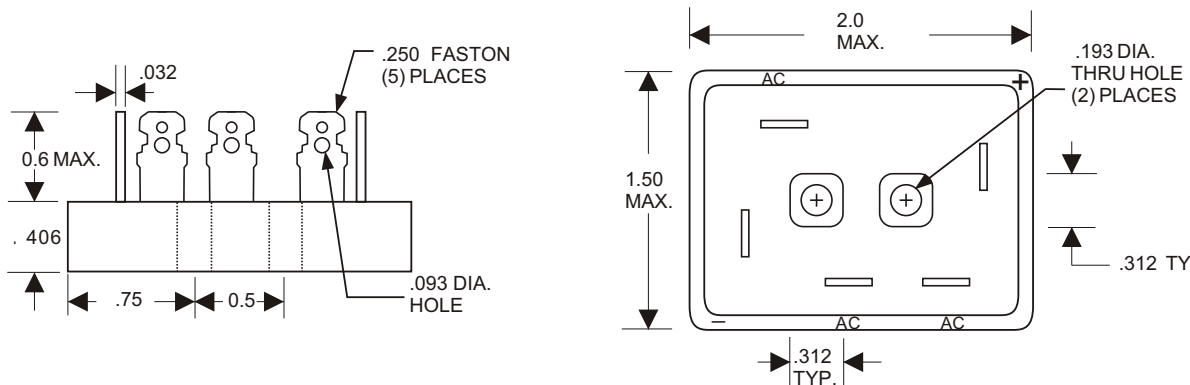
Figure 4

SCHEMATIC



PWT SERIES MECH. OUTLINE

Dielectric test voltage 1500 V RMS max, 50-60 Hz



- NOTES: 1. Corrosion resistant terminals designed for .250 female quick connector, wrap around or solder.
 2. A thin film of silicone thermal compound is recommended between the Minibrige[®] case and mounting surface for improved thermal conduction.

ELECTRONIC DEVICES, INC. DESIGNERS AND MANUFACTURERS OF SOLID STATE DEVICES SINCE 1951.

21 GRAY OAKS AVENUE * YONKERS, NEW YORK 10710 914-965-4400 * FAX 914-965-5531 * 1-800-678-0828

e-mail: sales@ediodes.com * website: <http://www.ediodes.com>