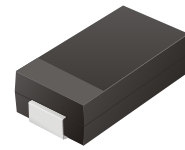


CFRA101 Thru CFRA107

Reverse Voltage: 50 - 1000 Volts
Forward Current: 1.0 Amp



Features

- Ideal for surface mount applications
- Easy pick and place
- Plastic package has Underwriters Lab. flammability classification 94V-0
- Fast recovery time: 150 - 500 nS
- Low leakage current

Mechanical data

- Case: Mini SMA/SOD-123 molded plastic
- Terminals: solderable per MIL-STD-750, method 2026
- Polarity: Color band denotes cathode end
- Mounting position: Any
- Approx. Weight: 0.04 gram



Maximum Ratings and Electrical Characteristics

Parameter	Symbol	CFRA 101	CFRA 102	CFRA 103	CFRA 104	CFRA 105	CFRA 106	CFRA 107	Unit	
Max. Repetitive Peak Reverse Voltage	V _{RRM}	50	100	200	400	600	800	1000	V	
Max. DC Blocking Voltage	V _{DC}	50	100	200	400	600	800	1000	V	
Max. RMS Voltage	V _{RMS}	35	70	140	280	420	560	700	V	
Peak Surge Forward Current 8.3ms single halfsine-wave superimposed on rate load (JEDEC method)	I _{FSM}	30							A	
Max. Average Forward Current	I _o	1.0							A	
Max. Instantaneous Forward Current at 1.0 A	V _F	1.3							V	
Reverse recovery time	T _{rr}	100			250		500		nS	
Max. DC Reverse Current at Rated DC Blocking Voltage Ta=25°C Ta=100°C	I _R	5.0				50				uA
Max. Thermal Resistance (Note 1)	R _{θJA}	42							°C/W	
Operating Junction Temperature	T _j	-55 to +150							°C	
Storage Temperature	T _{STG}	-55 to +150							°C	

Note 1: Thermal resistance from junction to ambient.

Rating and Characteristic Curves (CFRA101 Thru CFRA107)

Fig. 1 - Reverse Characteristics

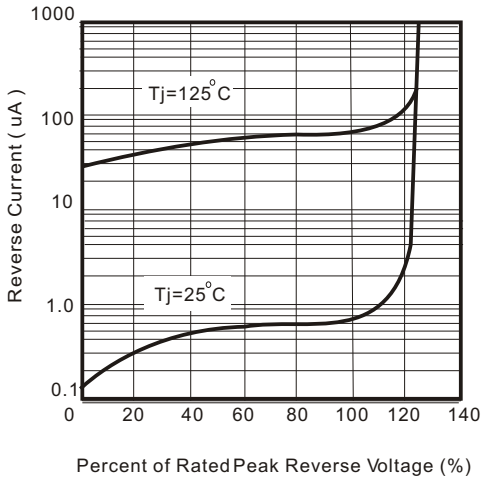


Fig.2 - Forward Characteristics

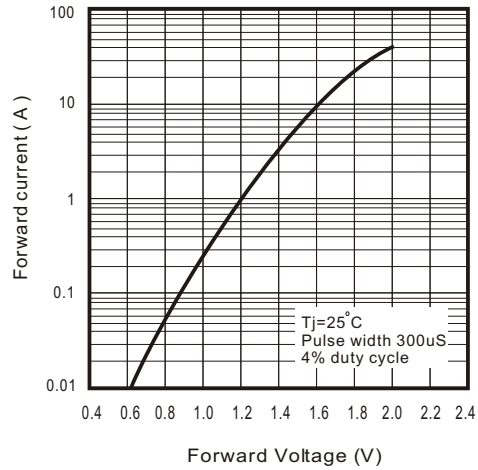


Fig. 3 - Junction Capacitance

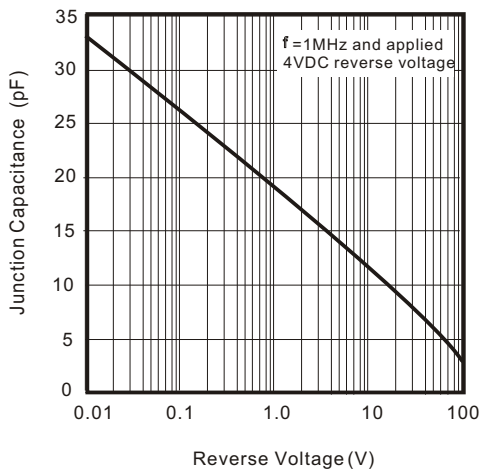


Fig. 4 - Non Repetitive Forward Surge Current

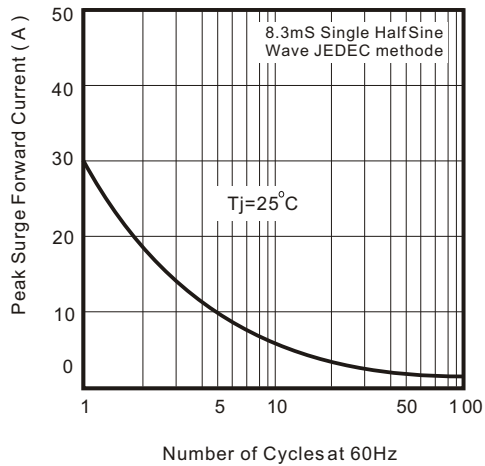
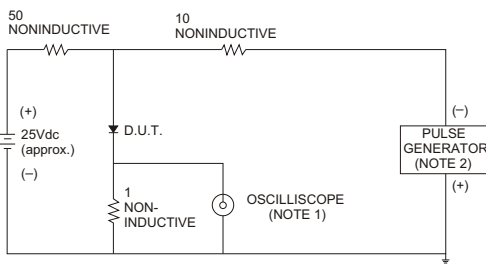


Fig. 5 - Test Circuit Diagram and Reverse Recovery Time Characteristics



NOTES: 1. Rise Time= 7ns max., Input Impedance= 1 megohm.22pF.
2. Rise Time= 10ns max., Source Impedance= 50 ohms.

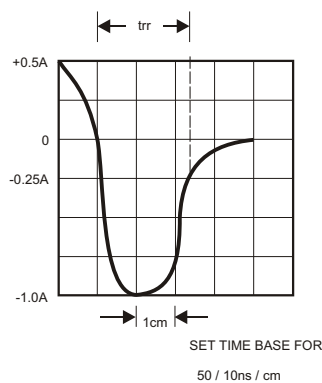


Fig. 6 - Current Derating Curve

