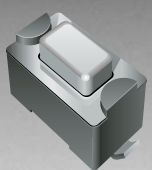



RoHS COMPLIANT



**BOURNS®**

### Features

- Available sharp click feel with a positive tactile feedback
- Ultraminiature and lightweight structure suitable for high density mounting
- Economical
- Reliable
- RoHS compliant \*

 The STS Series is currently available, although not recommended for new designs.

## STS Series - Ultraminiature Tactile Switch

### Electrical Characteristics

Electrical Life  
 .....50,000 Cycles for 160 gf, 320 gf Rating  
 .....50 mA, 12 VDC Contact Resistance  
 .....100 mΩ max. Insulation Resistance  
 .....100 MΩ min. @ 500 VDC Dielectric Strength  
 .....250 VAC/1 minute Contact Arrangement  
 .....SPST

### Environmental Characteristics

Operation Temperature Range  
 .....-25 °C to +70 °C Storage Temperature Range  
 .....-30 °C to +80 °C Vibration Test  
 MIL-STD-202F Method 201A Frequency  
 .....10-55-10 Hz/1 minute Directions  
 .....X,Y,Z, three mutually perpendicular directions Time  
 .....2 hours each direction Shock Test  
 MIL-STD-202F Method 213B Condition A Gravity  
 .....50 G (peak value), 11 msec Direction and Times  
 .....6 sides and 3 times in each direction

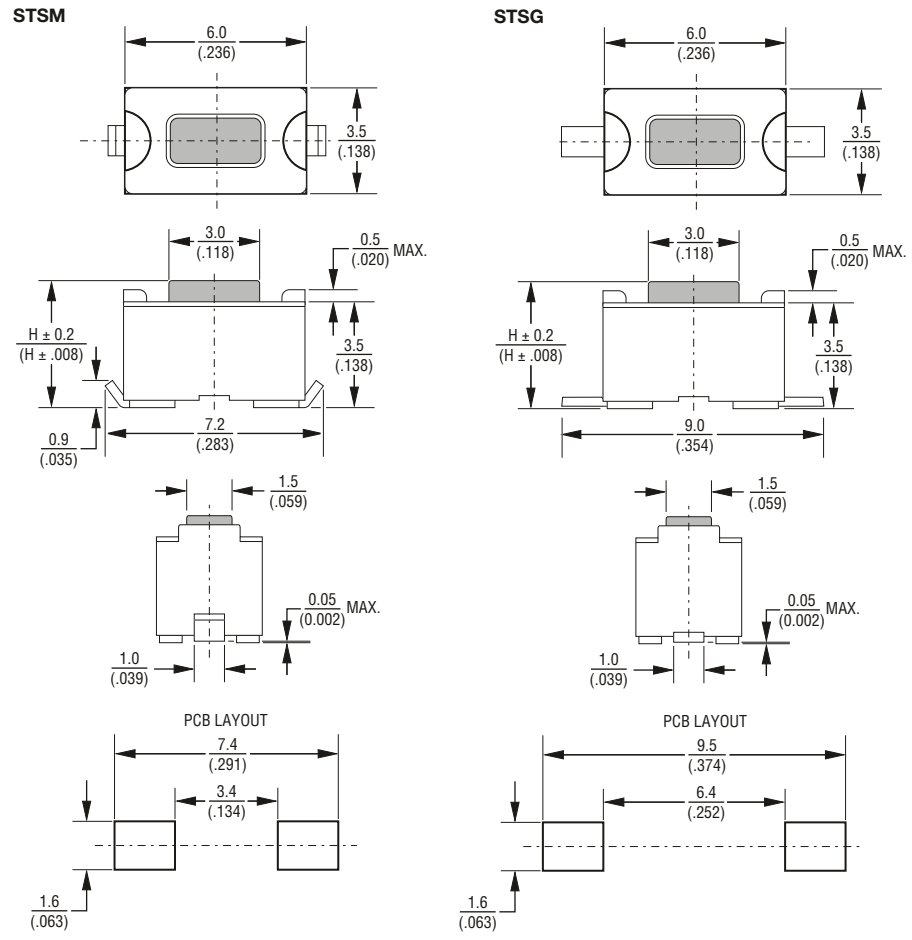
### Physical Characteristics

Cover Materials.....Stainless Steel Base Materials .....UL94V-0 Nylon Thermoplastic Actuator .....UL94V-0 Nylon High-Temperature Thermoplastic Contact Disc .....Stainless steel with silver cladding Terminals.....Brass with silver cladding

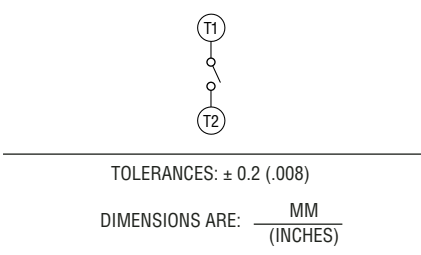
### How to Order

Model **STS M - 3 1 - S TR**  
 Style  
 M = Surface Mount "J" Style  
 G = Surface Mount "G" Style  
 H = Through-hole "H" Style  
 Product Size  
 3 = 3.5 mm wide x 6 mm long  
 Height  
 1 = 4.3 mm  
 2 = 5.0 mm  
 Color of Stem for Actuating Force  
 N = Brown, 160 g  
 R = Red, 260 g  
 S = Salmon, 320 g  
 Y = Yellow, 520 g  
 Packaging Option  
 = Std. Packaging - 135 pcs./tube  
 TR = Tape & Reel Packaging -  
 31 - 1800 pcs./reel (STSM & STSG only)  
 32 - 1600 pcs./reel (STSM & STSG only)

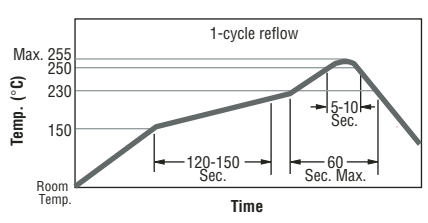
### Product Dimensions



### Circuit Diagram



### Reflow Soldering Profile



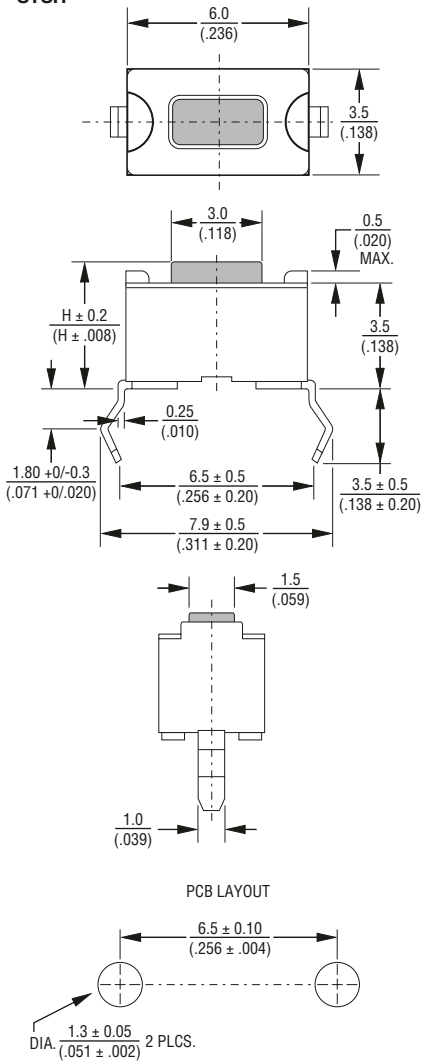
\*RoHS Directive 2002/95/EC Jan 27 2003 including Annex. Specifications are subject to change without notice. Customers should verify actual device performance in their specific applications.

# STS Series - Ultraminiature Tactile Switch

**BOURNS®**

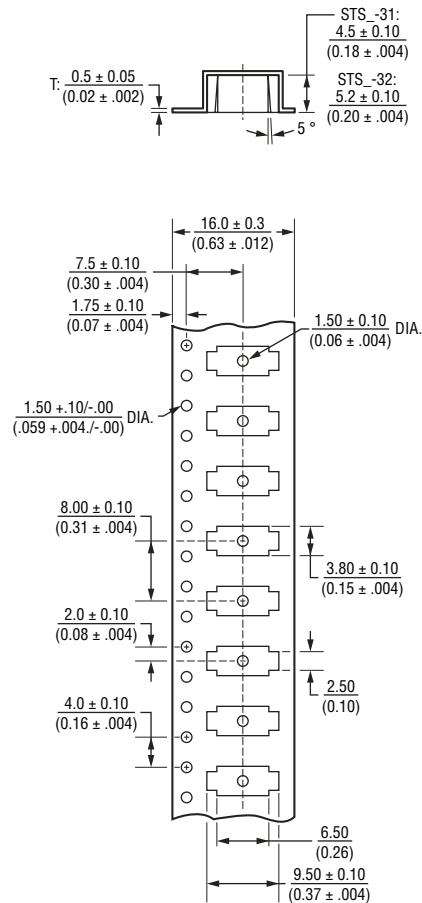
## Product Dimensions

STSH

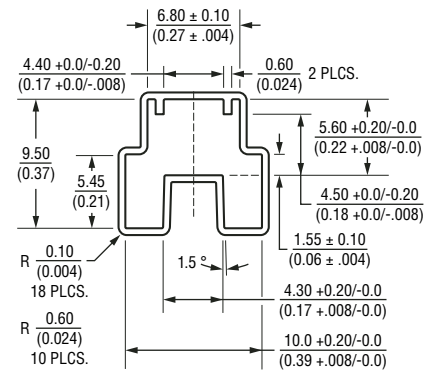


## Packaging Specifications

STSG  
STSM



STSH



TOLERANCES: ± 0.2 (.008)

DIMENSIONS ARE:  $\frac{\text{MM}}{\text{(INCHES)}}$