

# WASH-AWAY SPACERS

## Wash-Away Component and General Purpose Spacers

- Ideal for all industry-standard DIP, axial and radial mounted devices
- Properly elevate and protect delicate leads during board handling and assembly
- Spacers wash away in hot or warm running water
- 96 different sizes and elevations



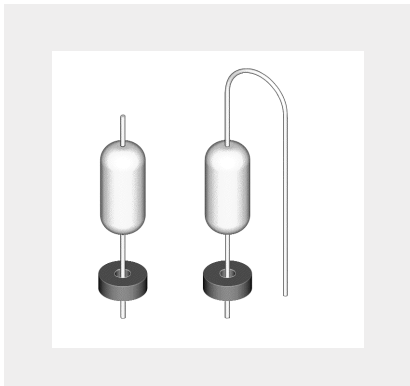
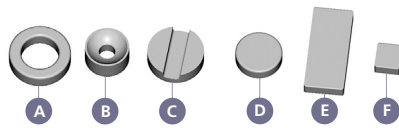
Most DISS-O-PADS® may be ordered in an effervescent version to reduce dissolving time. Add the letter "E" as a suffix, e.g. TO-67-070E. The extra cost is \$3.50/K regardless of quantity.

**Standard Tolerances:** ±.005

**To Order:**

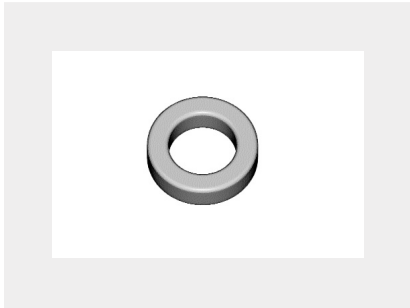
Simply specify PART NUMBER and follow by THICKNESS desired. EXAMPLE: TO-67-070 is the basic, TO-67 part, .070" thick

**Note:** For higher quantities or special shapes consult factory.



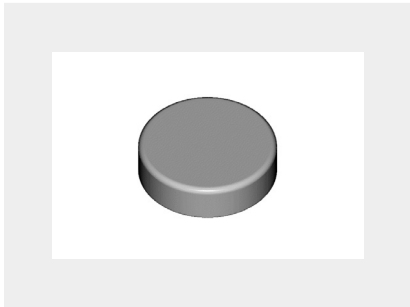
### On-End/Cord Wood

Part No.	I.D.	O.D.	Thickness	FIG.
TO-7	.075 (1.9)	.175 (4.4)	030, 050, 060, 070, 090, 100, 120, 130	A
TO-8	.062 (1.6)	.156 (4.0)	030, 050, 060, 070, 090, 100, 120, 130	A
TO-10	.040 (1.0)	.085 (2.2)	030, 040, 050, 060, 070	A
TO-11	.045 (1.1)	.100 (2.5)	030, 040, 050, 060, 070	A
TO-26	.070 (1.8)	.187 (4.7)	030, 040, 050, 060, 070, 090, 100, 120	A
TO-40	.045 (1.1)	.156 (4.0)	030, 050, 060, 070, 090, 100, 120, 130	A
TO-64	.045 (1.1)	.140 (3.6)	030, 050, 060, 070, 090, 100, 120, 130	A
TO-65	.075 (1.9)	.140 (3.6)	030, 050, 060, 070, 090, 100, 120, 130	A
TO-67	.045 (1.1)	.140 (3.6)	050, 060, 070, 090, 100, 120, 130	B
TO-68	.045 (1.1)	.110 (2.8)	040, 050, 060, 070, 090, 100, 120, 130	B



### General Purpose

Part No.	I.D.	O.D.	Thickness	FIG.
TO-46	.090 (2.3)	.250 (6.4)	040, 050, 060, 070, 090, 100, 120, 130	A
TO-19	.250 (6.4)	.480 (12.2)	040, 050, 060, 070, 090, 100, 120, 130	A
TO-22	.225 (5.7)	.437 (11.1)	040, 050, 060, 070, 090, 100, 120, 130	A
TO-23	.090 (2.3)	.310 (7.9)	040, 050, 060, 070, 090, 100, 120, 130	A
TO-24	.090 (2.3)	.340 (8.6)	040, 050, 060, 070, 090, 100, 120, 130	A
TO-30	.275 (7.0)	.397 (10.0)	040, 050, 060, 070, 090, 100, 120, 130	A
TO-25	.180 (4.6)	.480 (12.2)	040, 050, 060, 070, 090, 100, 120, 130	A
TO-28	.172 (4.4)	.343 (8.7)	040, 050, 060, 070, 090, 100, 120, 130	A
TO-41	.156 (4.0)	.360 (9.1)	040, 050, 060, 070, 090, 100, 120, 130	A
TO-42	.250 (6.4)	.438 (11.1)	040, 050, 060, 070, 090, 100, 120, 130	A



### Solid

Part No.	I.D.	O.D.	Thickness	FIG.
TO-29	-	.156 (4.0)	040, 050, 060, 070, 090, 100, 120, 130	D
TO-31	-	.125 (3.2)	040, 050, 060, 070, 090, 100, 120, 130	D
TO-32	-	.187 (4.7)	040, 050, 060, 070, 090, 100, 120, 130	D
TO-33	-	.250 (6.4)	040, 050, 060, 070, 090, 100, 120, 130	D
TO-34	-	.375 (9.5)	040, 050, 060, 070, 090, 100, 120, 130	D